

PREPARED ESPECIALLY FOR



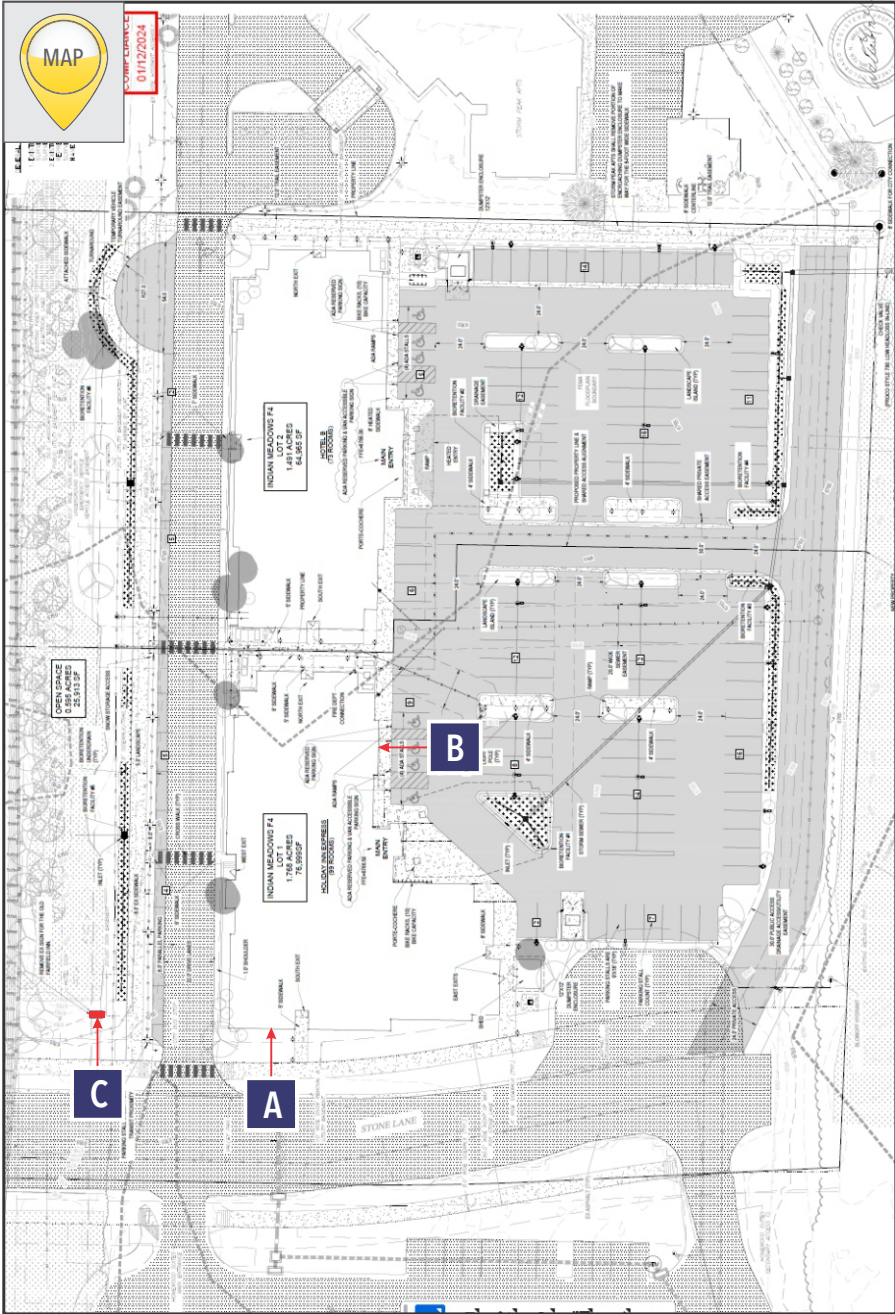
*Holiday Inn
Express*

— BY IHG —

SITE# SBSSS
3350 S. LINCOLN AVE.
STEAMBOAT SPRINGS, CO 80487

YOUR PARTNER IN BUILDING AN **OUTSTANDING** IMAGE

image national signs **in**TM
...bringing your image to light!



SITE MAP
SCALE: N.T.S.

DESIGN SIGN STATUS - MAIN ID WALL SIGNS			
SIGN #	LOCATION	SIGN TYPE	TECHNICALLY VERIFIED
A	SOUTH ELEVATION	CHANNEL LETTERS - ILLUMINATED	
B	EAST ELEVATION	CHANNEL LETTERS - ILLUMINATED	

DESIGN SIGN STATUS - FREESTANDING SIGNS		
C	STONE LN	D/F MONUMENT SIGN - ILLUMINATED

NOTE:
CHANNEL LETTERS THAT MENTION THE HOTEL ARE REQUIRED BY BRAND TO LEAVE THE WALLS OPEN FOR US UNTIL INSTALL.

REVISIONS

- 1)REMOVED "SUITES" FROM DESIGN
- 2)UPDATED SQ.FT. ON BUILDING SIGNS w/ BOXED WORDS- Sb
- 3)UPDATED SQ.FT. ON BUILDING SIGNS w/ 12 SIDED BOX- Sb
- 4)UPDATED MONUMENT TO NEWEST STANDARD - Sb

It is the intent and purpose of this color rendering to provide a basic color representation of your sign finish and color. However, digital media and printed colors will vary from actual paint finish and color. Existing painted surfaces will have a perceptible difference in shade and sheen from your sign finish. Providing a sample of the paint you wish to match or a Matthews paint color formula will minimize the differences.

image national signs

...bringing your image to light!

16265 Star Rd., Nampa, ID 83687 - toll free: 800.592.8058 - tele: 208.345.4020

imagenational.com

in

TM

UL

UNDERWRITERS
LABORATORIES
ELECTRIC SIGN

NAMPA PLANT -
UL #433195-001

U.S. & P.R. - All signs conform to UL-48/2161 (labeled accordingly) & must comply with UL-41.1 install procedures. Canada - all signs must be CAS compliant. This sign(s) is intended to be installed in accordance with requirements of article 600 of the National Electrical Code and/or applicable local codes. This includes proper grounding and bonding of the sign.

Client: HOLIDAY INN EXPRESS		File: HIE-SBSSS-STEAMBOAT SPRINGS CO-070725-R4		Page No.
Site: # SBSSS 3350 S. LINCOLN AVE. STEAMBOAT SPRINGS, CO 80487	Date: 07/07/25		<div><div>#</div><div>Holiday Inn Express</div><div>BY IHG</div></div>	2 of 5
	Designer: Sb	Reviewed by:		
	Account Manager: WG	Engineer:		



SOUTH ELEVATION

SCALE: 1/16" = 1'-0"

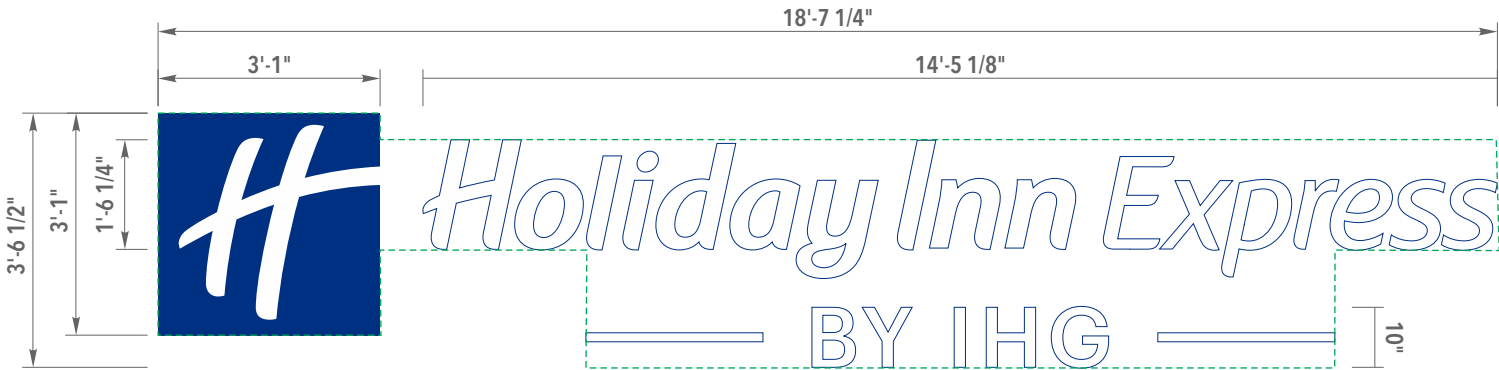
ALLOWED SQ. FT.: ±50'-0"

PROPOSED SQ. FT.: 49.8



SIMULATED NIGHT VIEW

SCALE: N.T.S.



37" x 37"= 9.5 SQ.FT.
18.25" x 186.25"= 23.6 SQ.FT.
19.375" x 124.0"= 16.7 SQ.FT.

SPECIAL NOTES

- VARIANCE MAY BE REQUIRED (BY OWNER) AS PROPOSED EXCEEDS CODE ALLOWANCE
- SIGN PERMIT REQUIRED PRIOR TO MANUFACTURING
- ASSUMING SIGN INCENTIVE PROGRAM IS APPLIED TO DESIGN SET

CITY CODE & ALLOWANCES

- 1 SQ.FT OF SIGN AREA PER 1 LINEAR FT OF BUILDING FRONTAGE
- 50 SQ.FT. MAX
- CABINET SIGNS ARE ALLOWED BUT 60% OF SIGN FACE TO BE OPAQUE

'CUSTOM' DESCRIPTION

OPAQUE LOGO CABINET

A

CUSTOM - ILLUMINATED CHANNEL LETTERS - REMOTE

SCALE: 3/8" = 1'-0"

image national signs

...bringing your image to light!

16265 Star Rd., Nampa, ID 83687 - toll free: 800.592.8058 - tele: 208.345.4020

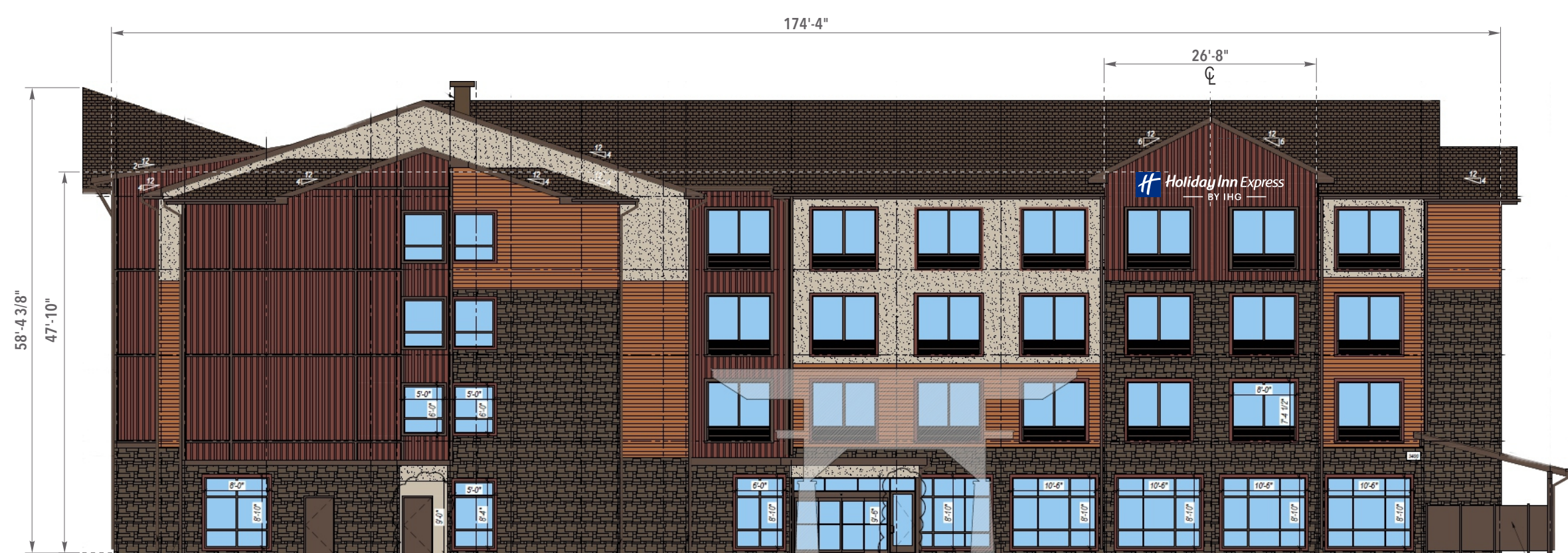
imagenational.com

UNDERWRITERS
LABORATORIES
ELECTRIC SIGN

NAMPA PLANT -
UL #433195-001

U.S. & P.R. - All signs conform to UL-48/2161 (labeled accordingly) & must comply with UL-41.1 install procedures. Canada - all signs must be CAS compliant. This sign(s) is intended to be installed in accordance with requirements of article 600 of the National Electrical Code and/or applicable local codes. This includes proper grounding and bonding of the sign.

Client: HOLIDAY INN EXPRESS		File: HIE-SBSSS-STEAMBOAT SPRINGS CO-070725-R4		Page No.
Site: # SBSSS 3350 S. LINCOLN AVE. STEAMBOAT SPRINGS, CO 80487	Date: 07/07/25		<p>BY IHG</p>	3 of 5
	Designer: Sb	Reviewed by:		
	Account Manager: WG	Engineer:		



EAST ELEVATION

SCALE: 1/16" = 1'-0"

ALLOWED SQ. FT.: ±15.0

PROPOSED SQ. FT.: 49.8

SPECIAL NOTES

- VARIANCE MAY BE REQUIRED (BY OWNER) AS PROPOSED EXCEEDS CODE ALLOWANCE
- SIGN PERMIT REQUIRED PRIOR TO MANUFACTURING
- ASSUMING SIGN INCENTIVE PROGRAM IS APPLIED TO DESIGN SET

CITY CODE & ALLOWANCES

- .2 SQ.FT OF SIGN AREA PER 1 LINEAR FT OF BUILDING FRONTAGE
- 15 SQ.FT. MAX
- CABINET SIGNS ARE ALLOWED BUT 60% OF SIGN FACE TO BE OPAQUE

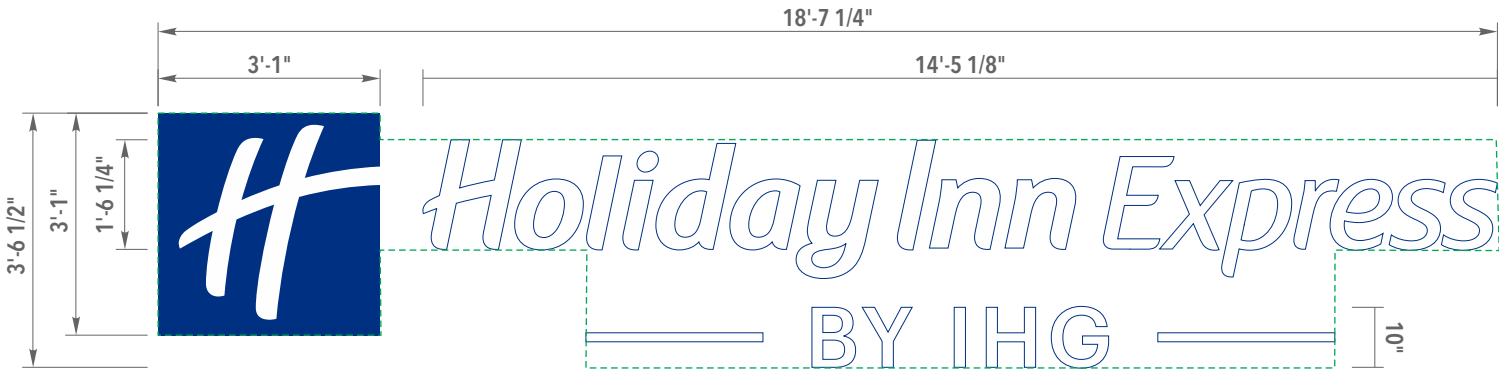
'CUSTOM' DESCRIPTION

OPAQUE LOGO CABINET



SIMULATED NIGHT VIEW

SCALE: N.T.S.



37" x 37"= 9.5 SQ.FT.
18.25" x 186.25"= 23.6 SQ.FT.
19.375" x 124.0"= 16.7 SQ.FT.

B CUSTOM - ILLUMINATED CHANNEL LETTERS - REMOTE
SCALE: 3/8" = 1'-0"

It is the intent and purpose of this color rendering to provide a basic color representation of your sign finish and color. However, digital media and printed colors will vary from actual paint finish and color. Existing painted surfaces will have a perceptible difference in shade and sheen from your sign finish. Providing a sample of the paint you wish to match or a Matthews paint color formula will minimize the differences.													
<div><div>image national signs</div><div>...bringing your image to light!</div><div>16265 Star Rd., Nampa, ID 83687 - toll free: 800.592.8058 - tele: 208.345.4020</div><div>imagenational.com</div></div> <div><div><div><div>UL</div><div>UNDERWRITERS LABORATORIES ELECTRIC SIGN</div></div><div>NAMPA PLANT - UL #433195-001</div><div>U.S. & P.R. - All signs conform to UL-48/2161 (labeled accordingly) & must comply with UL-41.1 install procedures. Canada - all signs must be CAS compliant. This sign(s) is intended to be installed in accordance with requirements of article 600 of the National Electrical Code and/or applicable local codes. This includes proper grounding and bonding of the sign.</div></div></div>				Client: HOLIDAY INN EXPRESS				File: HIE-SBSSS-STEAMBOAT SPRINGS CO-070725-R4		Page No.			
				Site: # SBSSS 3350 S. LINCOLN AVE. STEAMBOAT SPRINGS, CO 80487				Date: 07/07/25		<div><div><div><div></div></div><div><div></div></div></div><div><div>Holiday Inn Express</div><div>BY IHG</div></div></div>		4 of 5	
								Designer: Sb	Reviewed by:				
								Account Manager: WG	Engineer:				

- NEW MONUMENT RE-DESIGN UNDER CONSTRUCTION BY IHG. THIS IS BUDGETARY ONLY AND NEW LOGO TO BE UPDATED PRIOR TO PERMITTING AND MANUFACTURING.
PRICE MAY VARY
- REMOVE EXISTING FAIRFIELD INN SIGN.
CUT EXISTING UPRIGHT TO SIZE; SLEEVE OVER EXISTING STEEL

- 32.0 SQ. FT. MAXIMUM SIZE
- 9'-0" MAXIMUM HEIGHT



It is the intent and purpose of this color rendering to provide a basic color representation of your sign finish and color. However, digital media and printed colors will vary from actual paint finish and color. Existing painted surfaces will have a perceptible difference in shade and sheen from your sign finish. Providing a sample of the paint you wish to match or a Matthews paint color formula will minimize the differences.