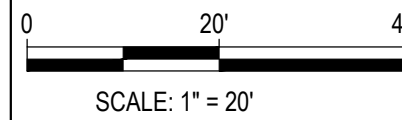


GENERAL NOTES:

- EXISTING CONDITIONS AND TOPOGRAPHY WAS SURVEYED AND DRAWN BY FOUR POINTS SURVEYING AND ENGINEERING.
- EXISTING UTILITIES SHOWN ARE REPRESENTATIVE OF AS-BUILT DATA AND SURVEYED FIELD LOCATES. BURIED UTILITIES HAVE NOT BEEN VERIFIED WITH POT-HOLING.

HOLIDAY INN EXPRESS & HOTEL B CONSTRUCTION PLANS INDIAN MEADOWS F4 LOT 1 AND 2 STEAMBOAT SPRINGS, CO 80487

HORIZONTAL SCALE



CONTOUR INTERVAL = 1 FT

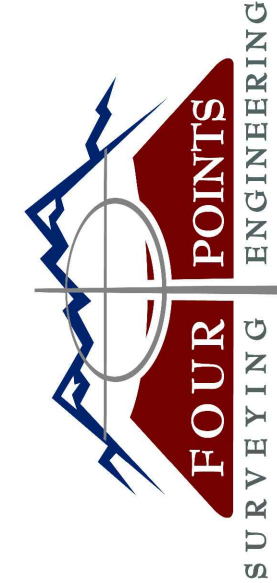
DATE: 06-30-2025
JOB #: 1448-005
DRAWN BY: DSC
DESIGN BY: RS
REVIEW BY: WNM

IF THIS DRAWING IS PRESENTED IN A FORMAT OTHER THAN 24" X 36", THE GRAPHIC SCALE SHOULD BE UTILIZED.

OVERALL SITE PLAN

SHEET NO.

C3



410 S. Lincoln Ave, Unit 15
P.O. Box 775966
Steamboat Springs, CO 80487
(970)-871-6772
www.fourpointse.com

| NO. | DATE | REVISIONS | DESCRIPTION |
|-----|---------|---|-------------|
| 1 | 9/13/23 | CURB INLETS REPLACED WITH CURB CUTS, INLET SCHEDULE, CHECK VALVE SPECS, EARTHWORK CALCS | RS |
| 2 | 11/8/23 | CSPH REVISIONS | RS |
| 3 | 3/29/24 | REVISED INLETS | RS |
| 4 | 8/30/24 | REMOVED 6" GV | RS |
| 5 | 6/30/25 | SUBSTANTIAL CONFORMANCE SET | DC |

