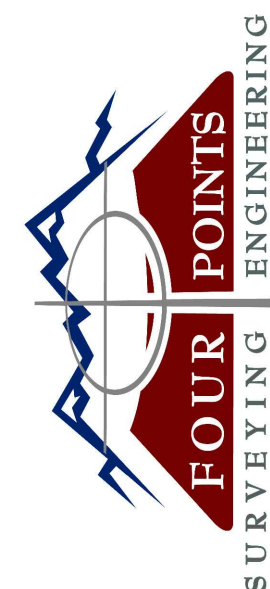
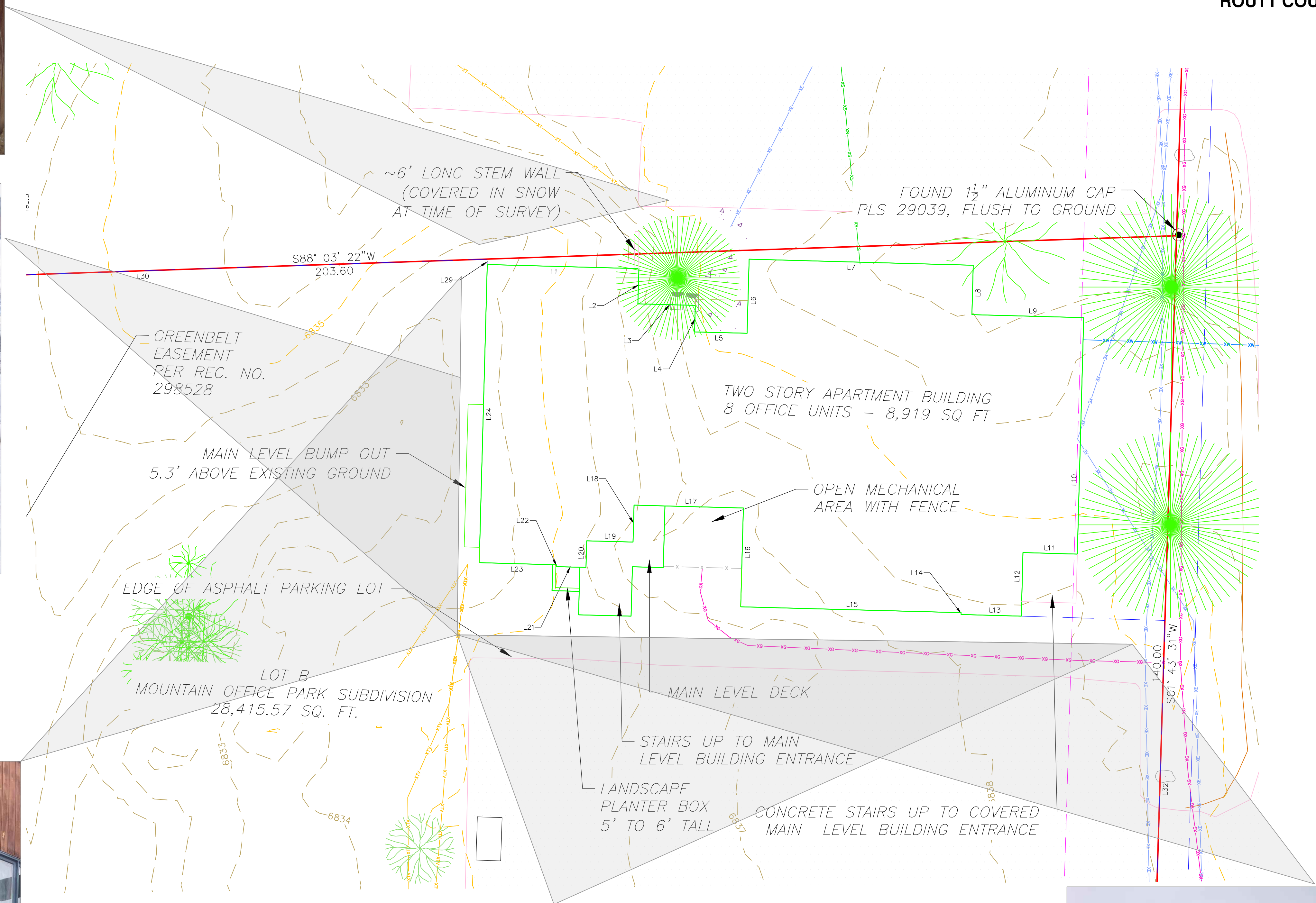




**EXISTING CONDITIONS - PHOTO EXHIBIT**  
**OF LOT A & B, MOUNTAIN OFFICE PARK SUBDIVISION**  
**LOCATED IN THE SW ¼ OF SECTION 27, TOWNSHIP 6 NORTH,**  
**RANGE 84 WEST OF THE 6TH P.M., STEAMBOAT SPRINGS,**  
**ROUTT COUNTY, COLORADO**

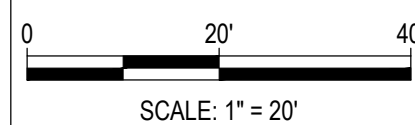


440 S. Lincoln Ave, Suite 4A  
P.O. Box 775966  
Steamboat Springs, CO 80487  
(970)-871-6772  
[www.fourpointsse.com](http://www.fourpointsse.com)

[illegible]

**VILLAGE DRIVE APARTMENTS  
CIVIL CONSTRUCTION DRAWINGS  
2955 VILLAGE DRIVE  
LOT A AND LOT B  
MT. OFFICE PARK SUBDIVISION**

### Horizontal Scale



**Contour Interval = 2 ft**

DATE: 3-3-2025
JOB #: 2033-004
DRAWN BY: WNM
DESIGN BY:
REVIEW BY:

IF THIS DRAWING IS PRESENTED IN A  
FORMAT OTHER THAN 24" X 36", THE  
GRAPHIC SCALE SHOULD BE UTILIZED

**DRAWING:**

## EXISTING CONDITIONS

SHEET #

2