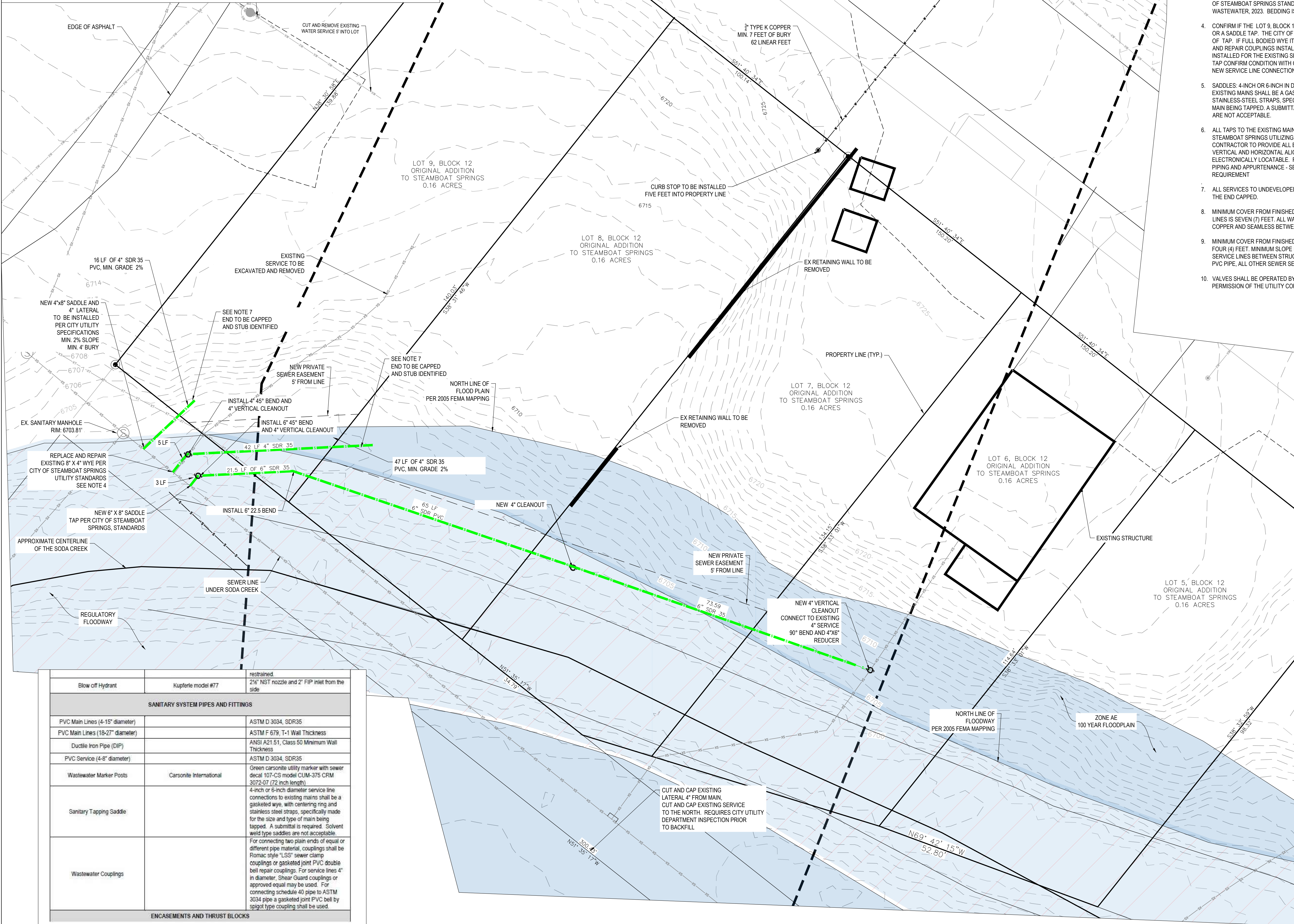


UTILITY PLAN

LOTS 5 THROUGH 9, BLOCK 12,
ORIGINAL TOWN OF STEAMBOAT SPRINGS,
LOCATED IN THE SW ¼ OF SECTION 8, TOWNSHIP 6 NORTH, RANGE 84 WEST, 6TH P.M.,
STEAMBOAT SPRINGS, ROUTT COUNTY, COLORADO



WATER, SEWER AND UTILITY NOTES:

- EXISTING DRY UTILITY LOCATIONS WERE OBTAINED FROM UTILITY MAPPING, FIELD SURVEYING AND HAVE NOT BEEN VERIFIED WITH ANY ADDITIONAL UNDERGROUND POT-HOLING.
- MINIMUM SEPARATION BETWEEN PARALLEL WATER AND SEWER MAINS AND SERVICES IS TEN (10) FEET.
- ALL WORK SHALL BE IN ACCORDANCE WITH THE REQUIREMENTS OF THE CITY OF STEAMBOAT SPRINGS STANDARD SPECIFICATIONS FOR WATER AND WASTEWATER, 2023. BEDDING IS NOTED IN SECTION 24, BEGINNING ON PAGE 40.
- CONFIRM IF THE LOT 9, BLOCK 12 EXISTING SERVICE TAP IS A FULL BODIED WYE OR A SADDLE TAP. THE CITY OF STEAMBOAT SPRINGS NEEDS TO CONFIRM TYPE OF TAP. IF FULL BODIED WYE IT WILL NEED TO BE SANCTIONED OUT OF THE MAIN AND REPAIR COUPLINGS INSTALLED. IF SO A BYPASS WILL NEED TO BE INSTALLED FOR THE EXISTING SEWER MAIN. IF CONNECTION IS A 8"x4" SADDLE TAP CONFIRM CONDITION WITH CITY UTILITY DEPARTMENT AND PROCEED WITH NEW SERVICE LINE CONNECTION.
- SADDLES: 4-INCH OR 6-INCH IN DIAMETER SERVICE LINE CONNECTIONS TO EXISTING MAINS SHALL BE A GASKETED WYE, WITH CENTERING RING AND STAINLESS-STEEL STRAPS, SPECIFICALLY MADE FOR THE SIZE AND TYPE OF MAIN BEING TAPPED. A SUBMITTAL IS REQUIRED. SOLVENT WELD-TYPE SADDLES ARE NOT ACCEPTABLE.
- ALL TAPS TO THE EXISTING MAINS SHALL BE PERFORMED BY THE CITY OF STEAMBOAT SPRINGS UTILIZING A SADDLE PROVIDED BY THE CONTRACTOR. CONTRACTOR TO PROVIDE ALL BEND BENDS REQUIRED FOR PROPERTY VERTICAL AND HORIZONTAL ALIGNMENT. ALL SERVICES SHALL BE ELECTRONICALLY LOCATABLE. REVIEW SECTION 40 WASTEWATER COLLECTION PIPING AND APPURTENANCE - SECTION 3.2 TRACER WIRE PAGE 79 FOR REQUIREMENT
- ALL SERVICES TO UNDEVELOPED PROPERTY SHALL BE WATERTIGHT AND HAVE THE END CAPPED.
- MINIMUM COVER FROM FINISHED GRADE TO TOP OF WATER MAIN AND SERVICE LINES IS SEVEN (7) FEET. ALL WATER SERVICE LINES SHALL BE TYPE "K" COPPER AND SEAMLESS BETWEEN FITTINGS.
- MINIMUM COVER FROM FINISHED GRADE TO TOP OF SEWER SERVICE LINE IS FOUR (4) FEET. MINIMUM SLOPE FOR SEWER SERVICE LINE IS 2%. SEWER SERVICE LINES BETWEEN STRUCTURE AND CLEAN OUT SHALL BE SCHEDULE 40 PVC PIPE, ALL OTHER SEWER SERVICE LINES SHALL BE SDR 35 PVC PIPE.
- VALVES SHALL BE OPERATED BY UTILITY PERSONNEL ONLY, UNLESS PERMISSION OF THE UTILITY COMPANY IS OBTAINED.



440 S. Lincoln Ave, Suite 4A
P.O. Box 775966
Steamboat Springs, CO 80487
(970)-871-6772
www.fourpointse.com

NO.	DATE	REVISIONS

LOTS 5-8, BLOCK 12
STEAMBOAT SPRINGS, CO 80487

Horizontal Scale
0 10' 20'
SCALE: 1" = 10'
Contour Interval = 1 ft
DATE: 08-27-2024
JOB #: 1027-032
DRAWN BY: WNM
DESIGN BY: DSC
REVIEW BY: WNM

UTILITY PLAN
DRAWING:
SHEET NO.
C1

Item	Manufacturer	Specifications
Blow off Hydrant	Kupferle model #77	restrained, 2 1/2" NST nozzle and 2" FIP inlet from the side
SANITARY SYSTEM PIPES AND FITTINGS		
PVC Main Lines (4-15" diameter)		ASTM D 3034, SDR35
PVC Main Lines (18-27" diameter)		ASTM F 679, T-1 Wall Thickness
Ductile Iron Pipe (DIP)		ANSI A21.51, Class 50 Minimum Wall Thickness
PVC Service (4-8" diameter)		ASTM D 3034, SDR35
Wastewater Marker Posts	Carsonite International	Green carsonite utility marker with sewer decal 107-CS model CUM-375 CRM 3072-07 (72 inch length)
Sanitary Tapping Saddle		4-inch or 6-inch diameter service line connections to existing mains shall be a gasketed wye, with centering ring and stainless steel straps, specifically made for the size and type of main being tapped. A submittal is required. Solvent weld type saddles are not acceptable.
Wastewater Couplings		For connecting two plain ends of equal or different pipe material, couplings shall be Romac style "LS" sewer clamp couplings or gasketed joint PVC double bell repair couplings. For service lines 4" in diameter, Shear Guard couplings or approved equal may be used. For connecting schedule 40 pipe to ASTM 3034 pipe a gasketed joint PVC bell by spigot type coupling shall be used.
ENCASEMENTS AND THRUST BLOCKS		

