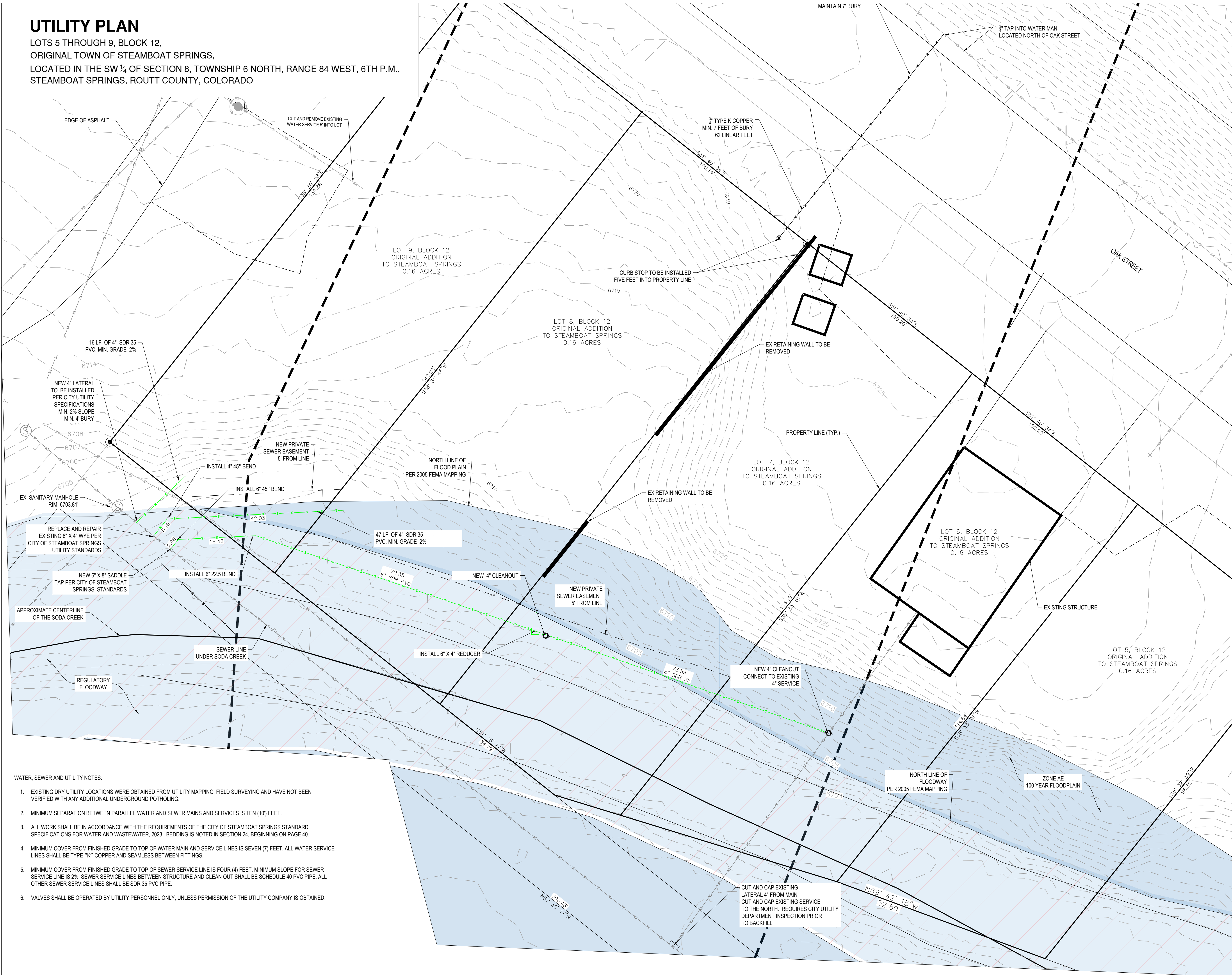


UTILITY PLAN

LOTS 5 THROUGH 9, BLOCK 12,
ORIGINAL TOWN OF STEAMBOAT SPRINGS,
LOCATED IN THE SW ¼ OF SECTION 8, TOWNSHIP 6 NORTH, RANGE 84 WEST, 6TH P.M.,
STEAMBOAT SPRINGS, ROUTT COUNTY, COLORADO



- WATER, SEWER AND UTILITY NOTES:**
- EXISTING DRY UTILITY LOCATIONS WERE OBTAINED FROM UTILITY MAPPING, FIELD SURVEYING AND HAVE NOT BEEN VERIFIED WITH ANY ADDITIONAL UNDERGROUND POTHOLING.
 - MINIMUM SEPARATION BETWEEN PARALLEL WATER AND SEWER MAINS AND SERVICES IS TEN (10') FEET.
 - ALL WORK SHALL BE IN ACCORDANCE WITH THE REQUIREMENTS OF THE CITY OF STEAMBOAT SPRINGS STANDARD SPECIFICATIONS FOR WATER AND WASTEWATER, 2023. BEDDING IS NOTED IN SECTION 24, BEGINNING ON PAGE 40.
 - MINIMUM COVER FROM FINISHED GRADE TO TOP OF WATER MAIN AND SERVICE LINES IS SEVEN (7) FEET. ALL WATER SERVICE LINES SHALL BE TYPE "K" COPPER AND SEAMLESS BETWEEN FITTINGS.
 - MINIMUM COVER FROM FINISHED GRADE TO TOP OF SEWER SERVICE LINE IS FOUR (4) FEET. MINIMUM SLOPE FOR SEWER SERVICE LINE IS 2%. SEWER SERVICE LINES BETWEEN STRUCTURE AND CLEAN OUT SHALL BE SCHEDULE 40 PVC PIPE. ALL OTHER SEWER SERVICE LINES SHALL BE SDR 35 PVC PIPE.
 - VALVES SHALL BE OPERATED BY UTILITY PERSONNEL ONLY, UNLESS PERMISSION OF THE UTILITY COMPANY IS OBTAINED.

440 S. Lincoln Ave, Suite 4A
P.O. Box 775966
Steamboat Springs, CO 80487
(970)-871-6772
www.fourpointssse.com

NO.	DATE	REVISIONS

**LOTS 5-8, BLOCK 12
STEAMBOAT SPRINGS, CO 80487**

Horizontal Scale
0 10' 20'
SCALE: 1" = 10'

Contour Interval = 1 ft
DATE: 08-05-24
JOB #: 1027-032
DRAWN BY: WNM
DESIGN BY: DSC
REVIEW BY: WNM

IF THIS DRAWING IS PRESENTED IN A FORMAT OTHER THAN 24" X 36", THE GRAPHIC SCALE SHOULD BE UTILIZED.

DRAWING: **UTILITY PLAN**

SHEET NO. **C1**