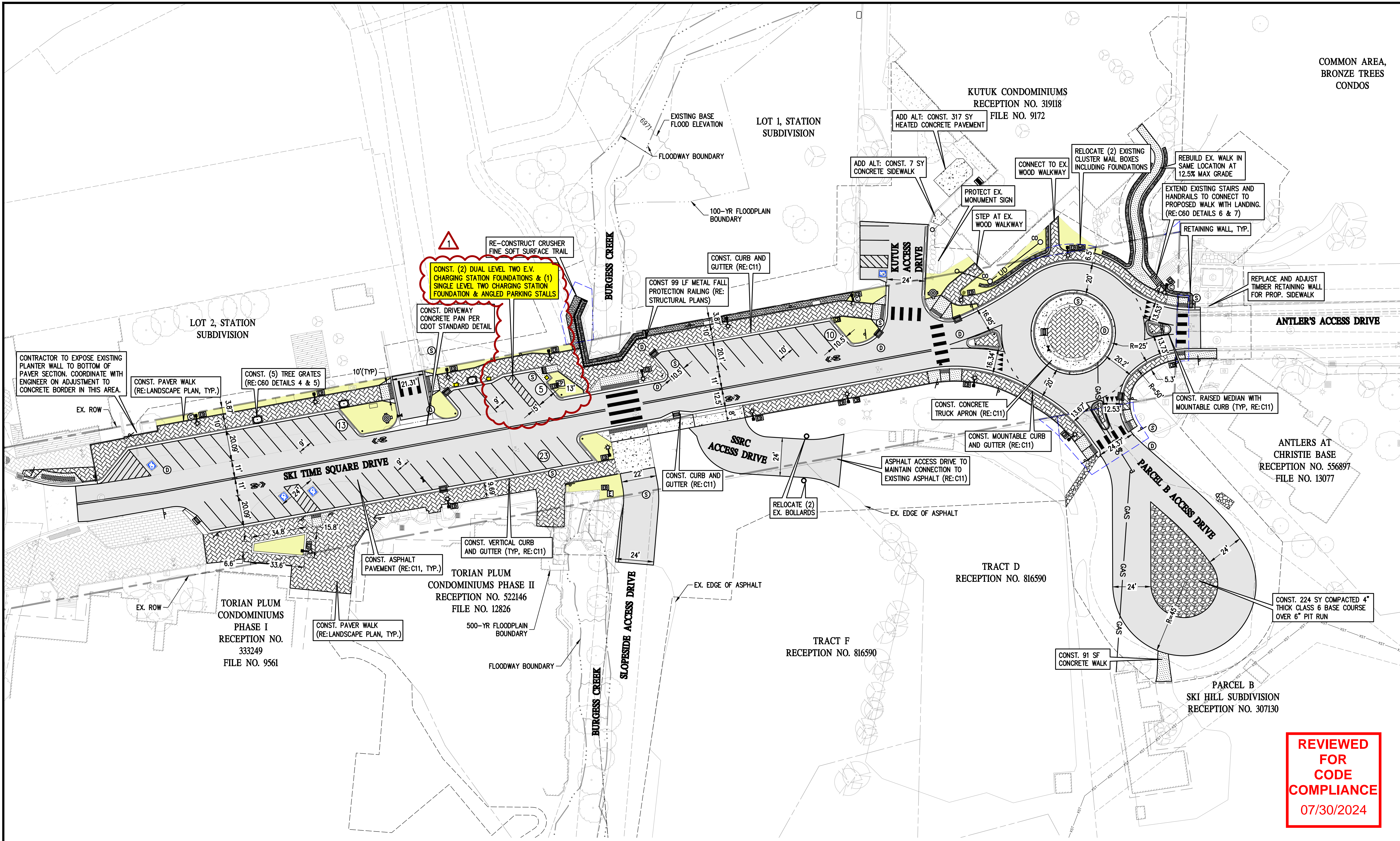


O:\020225 Ski Time Turnaround\Drawings\Construction Documents\2025 SITE PLAN.dwg, 2/16/2024 2:49:09 PM, Travis Stephens



COMMON AREA,  
BRONZE TREES  
CONDOS

KUTUK CONDOMINIUMS  
RECEPTION NO. 319118  
FILE NO. 9172

LOT 1, STATION  
SUBDIVISION

LOT 2, STATION  
SUBDIVISION

ANTLER'S ACCESS DRIVE

ANTLERS AT  
CHRISTIE BASE  
RECEPTION NO. 556897  
FILE NO. 13077

TRACT D  
RECEPTION NO. 816590

TRACT F  
RECEPTION NO. 816590

PARCEL B  
SKI HILL SUBDIVISION  
RECEPTION NO. 307130

SHOULDERING NOTES

ALL ASPHALT ROADWAY AND DRIVEWAY WITHOUT BORDERING CURB AND GUTTER SHALL HAVE A MINIMUM 2 FOOT WIDE COMPACTED CLASS 6 BASE COURSE SHOULDER. ALL SIDEWALKS/WALKWAYS SHALL HAVE A MINIMUM 1 FOOT WIDE TOPSOIL SHOULDER OR FINISHING AS SHOWN ON THE LANDSCAPE PLANS.

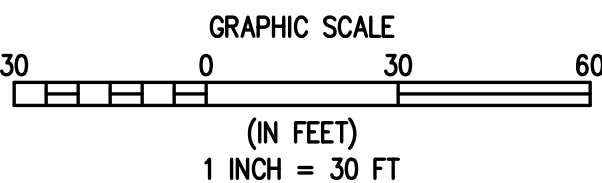
PUBLIC PARKING ANALYSIS TABLE

TYPE	EXISTING	PROPOSED
ANGLED/HEAD-IN	30	43
PARALLEL	6	-
ADA	1	-
ELECTRIC VEHICLE CHARGING	0	5
TOTAL	37	52

REVIEWED  
FOR  
CODE  
COMPLIANCE  
07/30/2024

1  
C7 C7

SITE PLAN



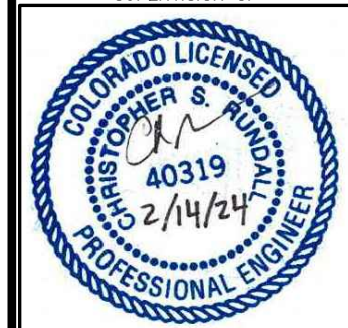
Engineering · Planning · Surveying

189 HILLTOP PKWY, SUITE 204 • STEAMBOAT SPRINGS, CO 80477  
P: 303.404.8569 • F: 303.404.8569 • www.baselinecorp.com

DESIGNED BY	DATE	PREPARED BY	REVISION DESCRIPTION
SMB	06/14/2022	PDP	UPDATE SCHEMATIC PLAN SET
JTP	10/19/2022	JTP	DESIGN DEVELOPMENT SUBMITTAL
JTP	07/16/2023	PDP	100% DESIGN DOCUMENTS
JTP	2/8/2023	SMB	BID DOCUMENTS
CSR	6/13/2023	SMB	BID DOCUMENT REVISIONS
CSR	2/14/2024	SMB	REVISION #1

CITY OF STEAMBOAT SPRINGS / SSRA  
STEAMBOAT SPRINGS  
ROUTT COUNTY  
SKI TIME SQUARE DRIVE TURNAROUND & COMPLETE STREET IMPROVEMENTS  
SKI TIME SQUARE DRIVE  
SITE PLAN

PREPARED UNDER THE DIRECT SUPERVISION OF



FOR AND ON BEHALF OF  
BASELINE CORPORATION  
INITIAL SUBMITTAL 05/30/22  
DRAWING SIZE 22" X 34"  
SURVEY FIRM SURVEY DATE  
LANDMARK 02/25/2022  
JOB NO. C020225  
DRAWING NAME  
20225 SITE PLAN.DWG  
SHEET 7 OF 95

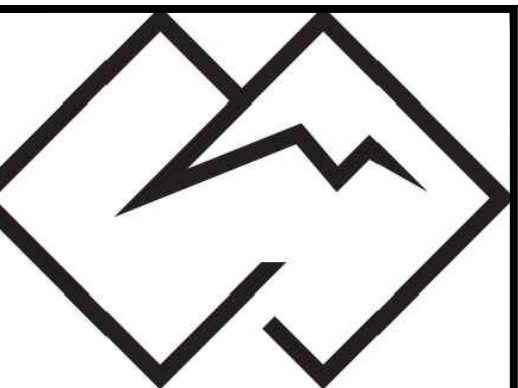
C7



SKI TIME  
SQUARE DRIVE  
PUBLIC  
TURNAROUND

BASELINE  
ENGINEERING

1169 Hilltop Parkway, Suite 204  
PO Box 770152  
Steamboat Springs, CO 80477

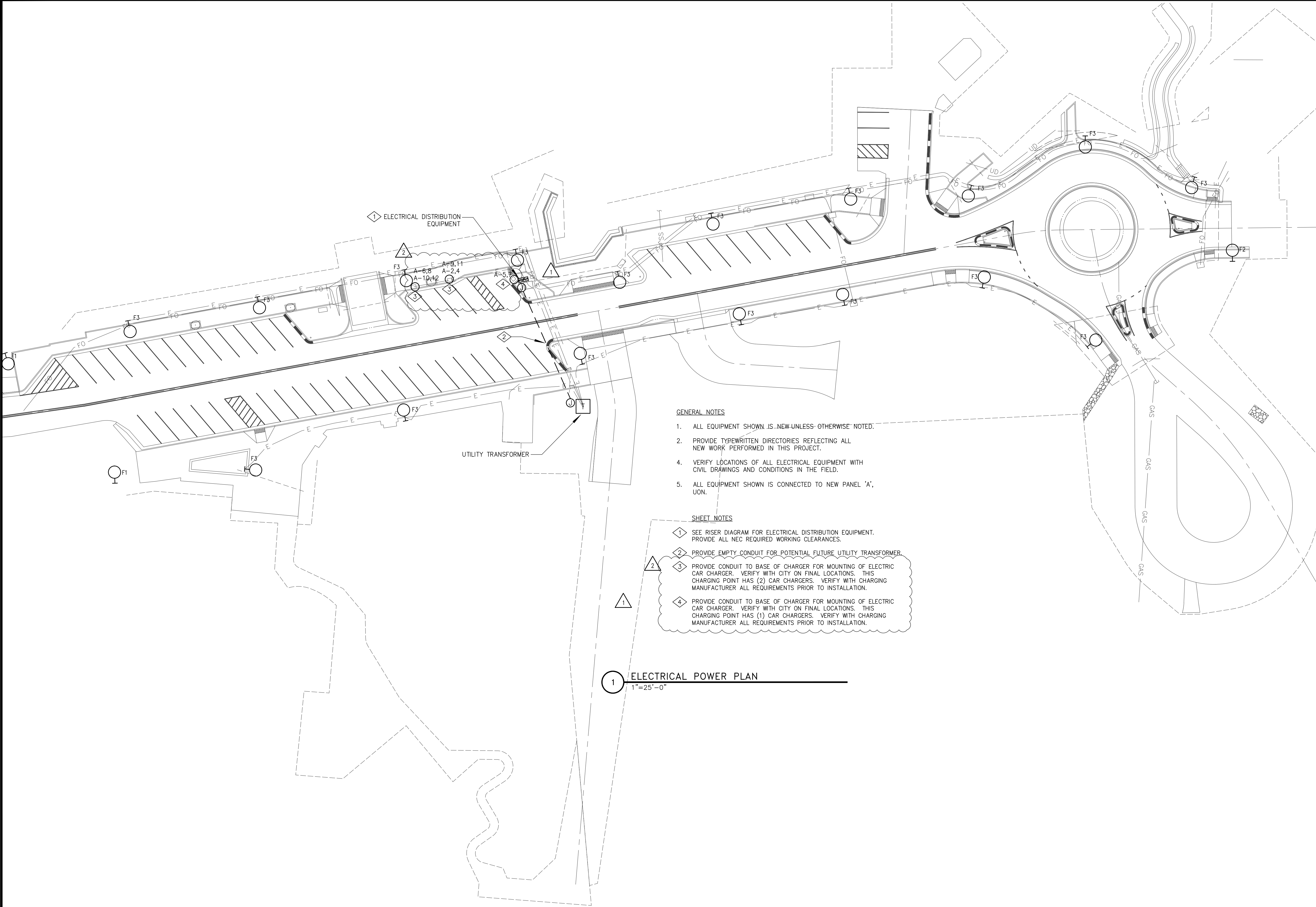


WILDER ENGINEERING LLC  
Andrew Wilder PE  
1170 Blue Sage Drive  
Steamboat Springs, CO 80487  
P: 970-819-7848  
E: andy@wilder-eng.com



Issue	By	Date & Issue Description	By
—	—	PROGRESS SET — 1.6.23	AW
—	—	100% DESIGN — 1.16.23	AW
—	—	BID DOCUMENTS — 2.8.23	AW
⚠	—	REVISION #1 — 2.9.24	AW
⚠	—	EV REVISION — 7.11.24	AW

Scale:	1" = 25'-0"
24x36	
Description:	POWER PLAN
Project Name:	SKI TIME SQ TURNAROUND
Project Number:	2022009
Sheet No.	E-2.0



GENERAL NOTES

1. ALL EQUIPMENT SHOWN IS NEW UNLESS OTHERWISE NOTED.
2. PROVIDE TYPEWRITTEN DIRECTORIES REFLECTING ALL NEW WORK PERFORMED IN THIS PROJECT.
3. PROVIDE CONDUIT TO BASE OF CHARGER FOR MOUNTING OF ELECTRIC CAR CHARGER. VERIFY WITH CITY ON FINAL LOCATIONS. THIS CHARGING POINT HAS (2) CAR CHARGERS. VERIFY WITH CHARGING MANUFACTURER ALL REQUIREMENTS PRIOR TO INSTALLATION.
4. VERIFY LOCATIONS OF ALL ELECTRICAL EQUIPMENT WITH CIVIL DRAWINGS AND CONDITIONS IN THE FIELD.
5. ALL EQUIPMENT SHOWN IS CONNECTED TO NEW PANEL 'A', UON.

SHEET NOTES

1. SEE RISER DIAGRAM FOR ELECTRICAL DISTRIBUTION EQUIPMENT. PROVIDE ALL NEC REQUIRED WORKING CLEARANCES.
2. PROVIDE EMPTY CONDUIT FOR POTENTIAL FUTURE UTILITY TRANSFORMER.
3. PROVIDE CONDUIT TO BASE OF CHARGER FOR MOUNTING OF ELECTRIC CAR CHARGER. VERIFY WITH CITY ON FINAL LOCATIONS. THIS CHARGING POINT HAS (2) CAR CHARGERS. VERIFY WITH CHARGING MANUFACTURER ALL REQUIREMENTS PRIOR TO INSTALLATION.
4. PROVIDE CONDUIT TO BASE OF CHARGER FOR MOUNTING OF ELECTRIC CAR CHARGER. VERIFY WITH CITY ON FINAL LOCATIONS. THIS CHARGING POINT HAS (1) CAR CHARGERS. VERIFY WITH CHARGING MANUFACTURER ALL REQUIREMENTS PRIOR TO INSTALLATION.

1 ELECTRICAL POWER PLAN  
1"=25'-0"

