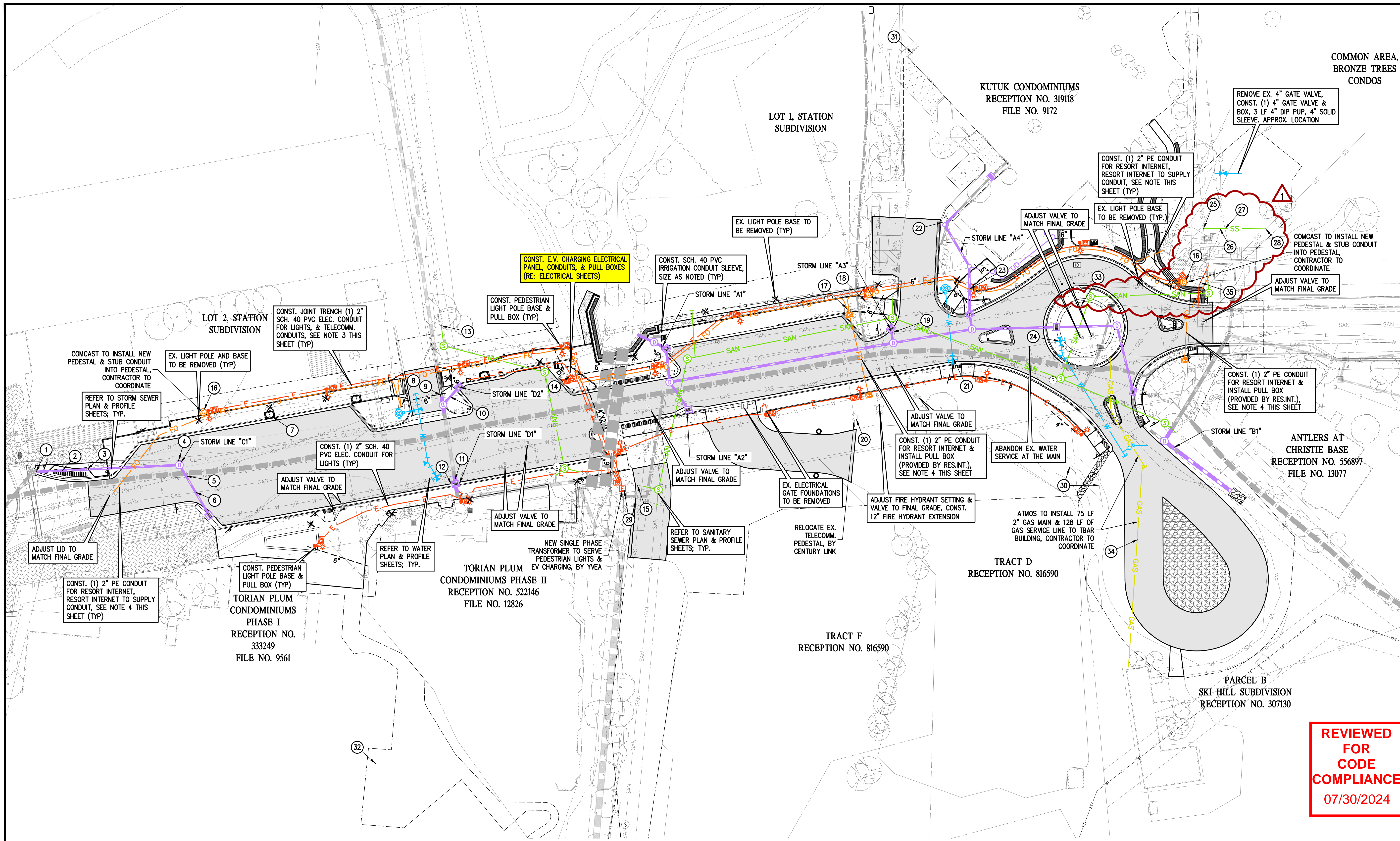


O:\020225 Ski Time Turnaround\Drawings\Construction Documents\2025 UTILITY PLAN P1.dwg, 2/16/2024 3:03:32 PM, Travis Stephens



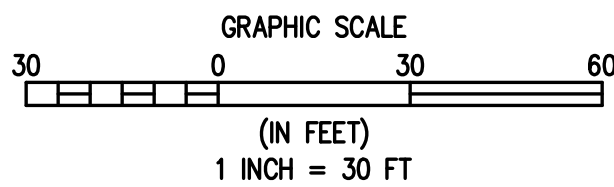
Know what's below.
Call before you dig.



- NOTES:
- CONTRACTOR TO COORDINATE MOVEMENT OF UTILITIES WITH OWNERS AND SEQUENCE WORK AROUND NECESSARY STAGES OF FACILITIES INSTALLATION AND ABANDONMENT.
 - LIGHT POLES AND LIGHTS TO BE INSTALLED BY YVEA.
 - THE JOINT TRENCH WILL INCLUDE TELECOMM. CONDUITS. COMCAST WILL INSTALL (2) TWO INCH PE CONDUITS IN THE TRENCH ONCE THE CONTRACTOR HAS THE TRENCH PREPARED. RESORT INTERNET WILL PROVIDE A REEL OF TWO INCH PE CONDUIT. THE CONTRACTOR SHALL INSTALL (1) TWO INCH PE CONDUIT FOR RESORT INTERNET. THE CONTRACTOR SHALL BED, SHADE, AND BACKFILL THE JOINT TRENCH.
 - THE CONTRACTOR SHALL CONSTRUCT A STAND ALONE TRENCH FOR THE RESORT INTERNET CONDUIT AT THE CONNECTIONS TO THE VAULT AND PULL BOXES. RESORT INTERNET WILL PROVIDE A REEL OF TWO INCH PE CONDUIT. THE CONTRACTOR SHALL INSTALL (1) TWO INCH PE CONDUIT FOR RESORT INTERNET. THE CONTRACTOR SHALL BED, SHADE, AND BACKFILL THE TRENCH.

1
C42 C42

UTILITY PLAN



→ = UTILITY CONFLICT OR COORDINATION NUMBER
(SEE SHEET C44)



REVIEWED
FOR
CODE
COMPLIANCE
07/30/2024

BASELINE

Engineering · Planning · Surveying
189 HILLTOP PKWY, SUITE 204 • STEAMBOAT SPRINGS, CO 80477
P: 970.878.0825 • F: 303.940.9559 • www.baselinecorp.com

DESIGNED BY	DATE	PREPARED BY	REVISION DESCRIPTION
SMB	06/14/2022	PDP	UPDATE SCHEMATIC PLAN SET
JTP	10/19/2022	JTP	DESIGN DEVELOPMENT SUBMITTAL
JTP	07/16/2023	PDP	100% DESIGN DOCUMENTS
JTP	2/8/2023	SMB	BID DOCUMENTS
CSR	6/13/2023	SMB	BID DOCUMENT REVISIONS
CSR	2/14/2024	SMB	REVISION #1

CITY OF STEAMBOAT SPRINGS / SSRA
STEAMBOAT SPRINGS
SKI TIME SQUARE DRIVE TURNAROUND & COMPLETE STREET IMPROVEMENTS
SKI TIME SQUARE DRIVE
UTILITY PLAN

FOR AND ON BEHALF OF
BASELINE CORPORATION

INITIAL SUBMITTAL 05/30/22
DRAWING SIZE 22" X 34"
SURVEY FIRM SURVEY DATE
LANDMARK 02/25/2022
JOB NO. C020225
DRAWING NAME
2025 UTILITY PLAN P1.DWG
SHEET 42 OF 95

42