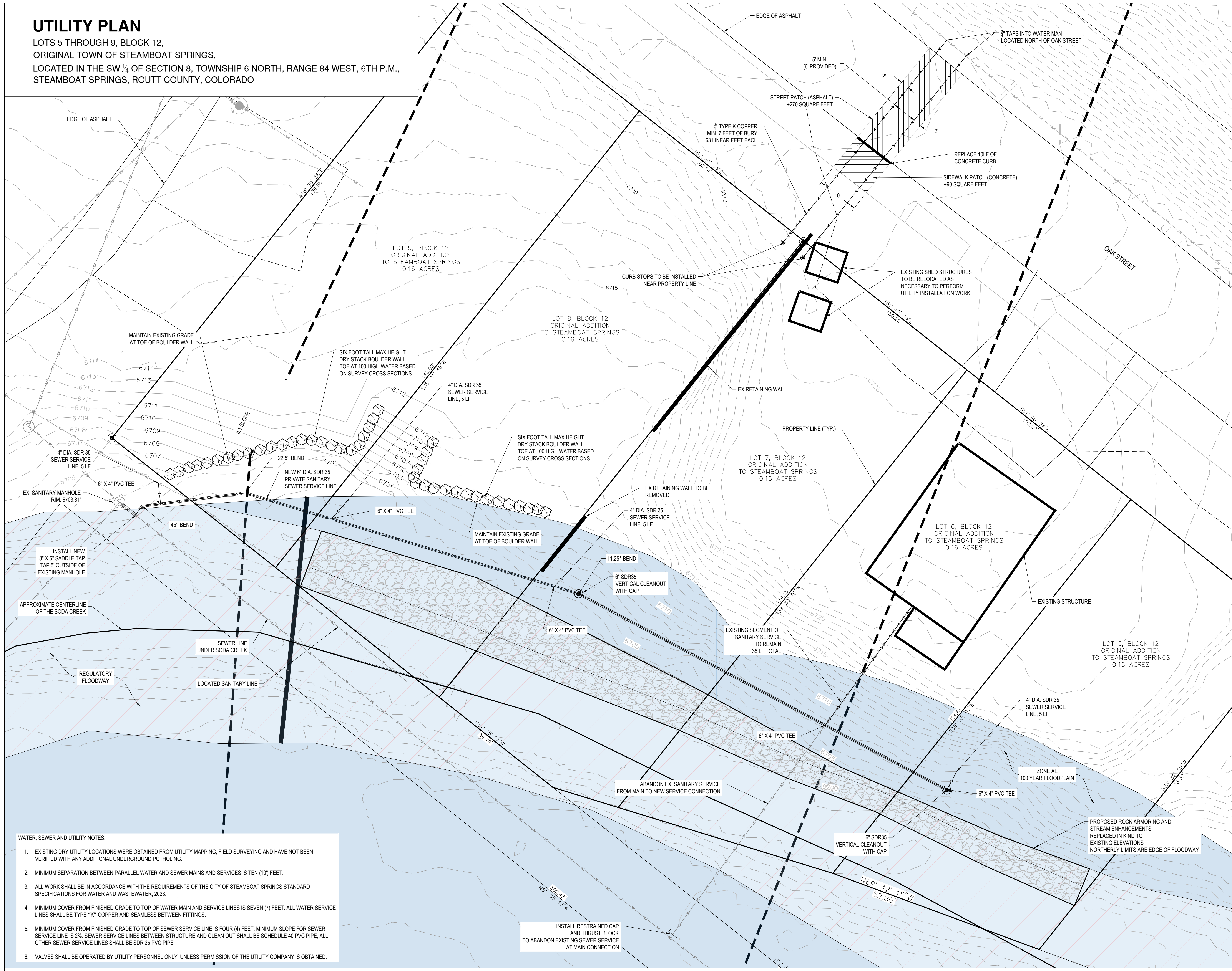



UTILITY PLAN

LOTS 5 THROUGH 9, BLOCK 12,
ORIGINAL TOWN OF STEAMBOAT SPRINGS,
LOCATED IN THE SW ¼ OF SECTION 8, TOWNSHIP 6 NORTH, RANGE 84 WEST, 6TH P.M.,
STEAMBOAT SPRINGS, ROUTT COUNTY, COLORADO



- WATER, SEWER AND UTILITY NOTES:**
- EXISTING DRY UTILITY LOCATIONS WERE OBTAINED FROM UTILITY MAPPING, FIELD SURVEYING AND HAVE NOT BEEN VERIFIED WITH ANY ADDITIONAL UNDERGROUND POTHOLING.
 - MINIMUM SEPARATION BETWEEN PARALLEL WATER AND SEWER MAINS AND SERVICES IS TEN (10) FEET.
 - ALL WORK SHALL BE IN ACCORDANCE WITH THE REQUIREMENTS OF THE CITY OF STEAMBOAT SPRINGS STANDARD SPECIFICATIONS FOR WATER AND WASTEWATER, 2023.
 - MINIMUM COVER FROM FINISHED GRADE TO TOP OF WATER MAIN AND SERVICE LINES IS SEVEN (7) FEET. ALL WATER SERVICE LINES SHALL BE TYPE "K" COPPER AND SEAMLESS BETWEEN FITTINGS.
 - MINIMUM COVER FROM FINISHED GRADE TO TOP OF SEWER SERVICE LINE IS FOUR (4) FEET. MINIMUM SLOPE FOR SEWER SERVICE LINE IS 2%. SEWER SERVICE LINES BETWEEN STRUCTURE AND CLEAN OUT SHALL BE SCHEDULE 40 PVC PIPE, ALL OTHER SEWER SERVICE LINES SHALL BE SDR 35 PVC PIPE.
 - VALVES SHALL BE OPERATED BY UTILITY PERSONNEL ONLY, UNLESS PERMISSION OF THE UTILITY COMPANY IS OBTAINED.

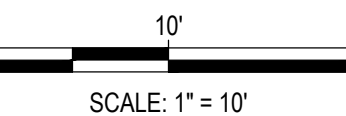


440 S. Lincoln Ave, Suite 4A
P.O. Box 775966
Steamboat Springs, CO 80487
(970)-871-6772
www.fourpointse.com

NO.	DATE	REVISIONS	INT

LOTS 5-8, BLOCK 12
STEAMBOAT SPRINGS, CO 80487

Horizontal Scale



SCALE: 1" = 10'

Contour Interval = 1 ft

DATE: 06/17/2024
JOB #: 1027-032
DRAWN BY: DSC
DESIGN BY: DSC
REVIEW BY: WNM

IF THIS DRAWING IS PRESENTED IN A FORMAT OTHER THAN A4 X 36", THE GRAPHIC SCALE SHOULD BE UTILIZED.

UTILITY PLAN

DRAWING: **C1**

SHEET NO. **C1**