

RIVERVIEW SITE B & E STEAMBOAT SPRINGS, CO

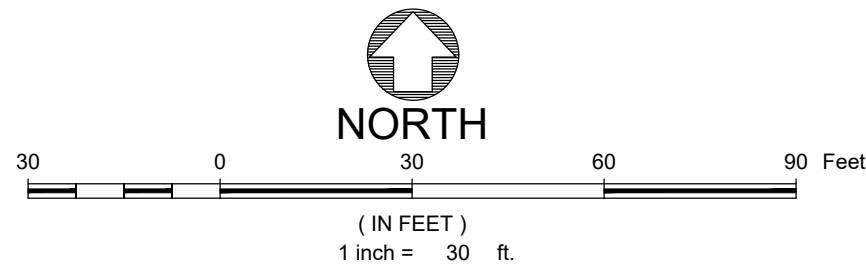
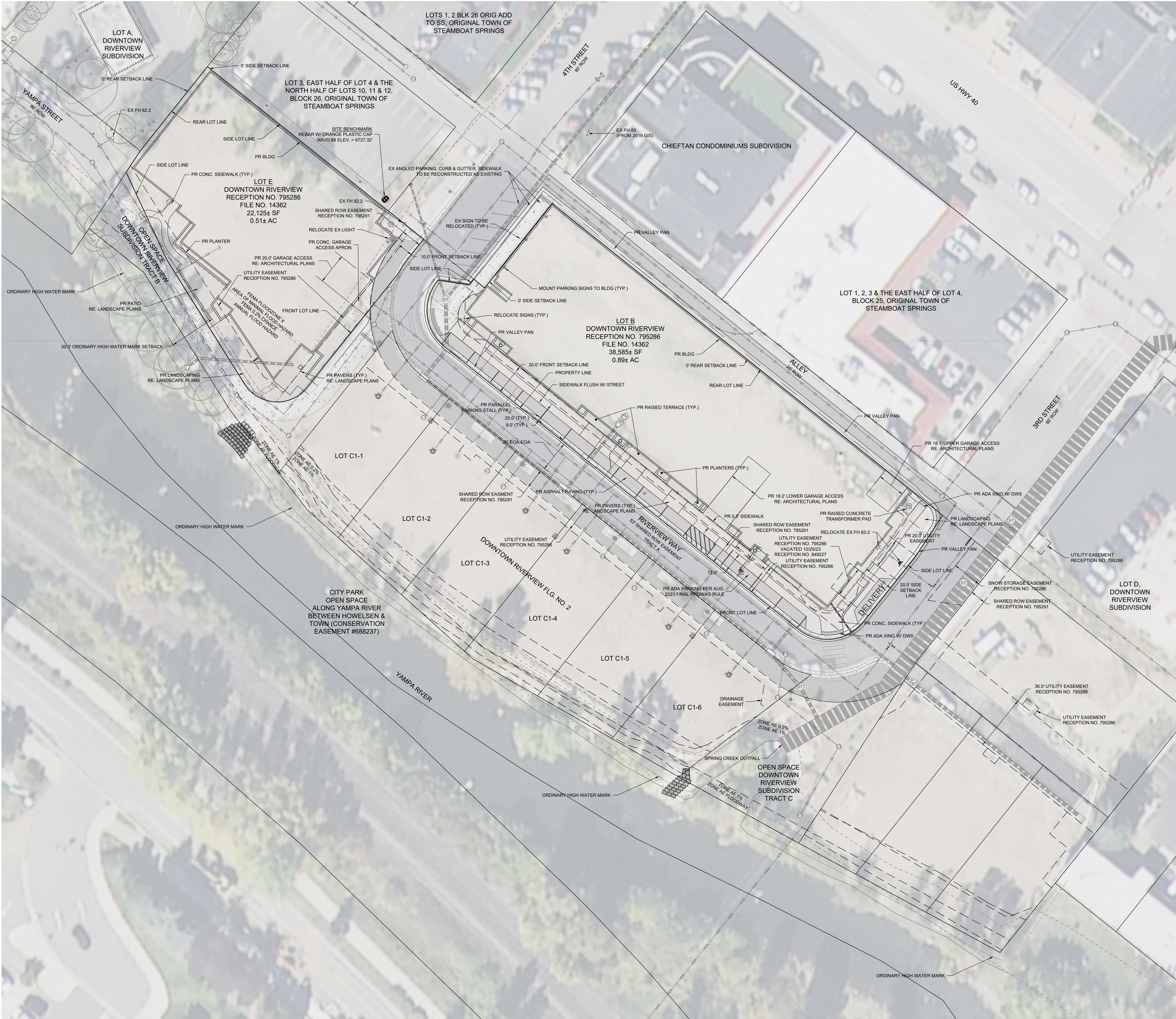
SITE PLAN LEGEND:

CENTERLINE	
BUILDING	
ROOF LINE/OVERHANG	
DECK	
WALL	
FENCE	
MAJOR CONTOUR	
MINOR CONTOUR	
ASPHALT	
CONCRETE	
GRAVEL	
SIGN	
DITCH/SWALE	
CULVERT W/ END SECTIONS	
STORM MANHOLE, MANHOLE INLET, GRATE INLET AND CURB INLET	

- NOTES:**
1. THE MEASURED DISTANCES SHOWN HEREON ARE IN U.S. SURVEY FEET.
 2. UNDERGROUND IMPROVEMENTS: LOCATIONS FOR UNDERGROUND IMPROVEMENTS ARE SHOWN HEREON PER ONE OR MORE OF THE FOLLOWING: VISIBLE AND APPARENT SURFACE EVIDENCE, AS-BUILT DRAWINGS PROVIDED BY OTHERS, MARKINGS PROVIDED BY COLORADO 911 ONE CALL SERVICES, PRIVATE UNDERGROUND LOCATING SERVICES, OR GIS INFORMATION. ANY METHOD OF SHOWING UNDERGROUND IMPROVEMENTS, OR ANY COMBINATION THEREOF, MAY NOT PROVIDE COMPLETE AND ACCURATE LOCATIONS FOR ALL UNDERGROUND IMPROVEMENTS. IF ACCURATE LOCATIONS FOR UNDERGROUND IMPROVEMENTS ARE REQUIRED, THEY WILL HAVE TO BE VERIFIED BY FIELD POT-HOLING OF THE IMPROVEMENTS. LANDMARK CONSULTANTS, INC. AND THE SURVEYOR OR ENGINEER OF RECORD SHALL NOT BE LIABLE FOR THE FAILURE TO ACCURATELY AND COMPLETELY DEPICT THE LOCATIONS OF UNDERGROUND IMPROVEMENTS.
 3. ALL REFERENCES HEREON TO BOOKS, PAGES, FILES, PARCEL ID NUMBERS AND RECEPTION NUMBERS ARE TO PUBLIC DOCUMENTS FILED IN THE RECORDS OF ROUTT COUNTY, COLORADO.
 4. PROJECT BENCHMARK: A RECOVERED REBAR W/ ORANGE PLASTIC CAP AS SHOWN HEREON, HAVING AN ELEVATION OF 6727.32' BASED ON THE NORTH AMERICAN VERTICAL DATUM OF 1988 (NAVD88) AS SHOWN HEREON.
 5. CONTOUR INTERVAL = 1 FOOT
 6. SNOW REMOVAL IS THE RESPONSIBILITY OF THE DOWNTOWN RIVERVIEW METRO DISTRICT AND WILL BE HAULED OFFSITE AS REQUIRED.

Issue Dates:

DATE	DESCRIPTION
09/08/2023	DEVELOPMENT PLAN
11/16/2023	DEVELOPMENT PLAN 2ND SUBMITTAL



RIVERVIEW SITE B & E STEAMBOAT SPRINGS, CO

SITE PLAN LEGEND:

CENTERLINE	
BUILDING	
ROOF LINE/OVERHANG	
DECK	
WALL	
FENCE	
MAJOR CONTOUR	
MINOR CONTOUR	
ASPHALT	
CONCRETE	
GRAVEL	
SIGN	
DITCH/SWALE	
CULVERT W/ END SECTIONS	
STORM MANHOLE, MANHOLE INLET, GRATE INLET AND CURB INLET	

- NOTES:**
- THE MEASURED DISTANCES SHOWN HEREON ARE IN U.S. SURVEY FEET.
 - UNDERGROUND IMPROVEMENTS: LOCATIONS FOR UNDERGROUND IMPROVEMENTS ARE SHOWN HEREON PER ONE OR MORE OF THE FOLLOWING: VISIBLE AND APPARENT SURFACE EVIDENCE, AS-BUILT DRAWINGS PROVIDED BY OTHERS, MARKINGS PROVIDED BY COLORADO 911 ONE CALL SERVICES, PRIVATE UNDERGROUND LOCATING SERVICES, OR GIS INFORMATION. ANY METHOD OF SHOWING UNDERGROUND IMPROVEMENTS, OR ANY COMBINATION THEREOF, MAY NOT PROVIDE COMPLETE AND ACCURATE LOCATIONS FOR ALL UNDERGROUND IMPROVEMENTS. IF ACCURATE LOCATIONS FOR UNDERGROUND IMPROVEMENTS ARE REQUIRED, THEY WILL HAVE TO BE VERIFIED BY FIELD POT-HOLING OF THE IMPROVEMENTS. LANDMARK CONSULTANTS, INC. AND THE SURVEYOR OR ENGINEER OF RECORD SHALL NOT BE LIABLE FOR THE FAILURE TO ACCURATELY AND COMPLETELY DEPICT THE LOCATIONS OF UNDERGROUND IMPROVEMENTS.
 - ALL REFERENCES HEREON TO BOOKS, PAGES, FILES, PARCEL ID NUMBERS AND RECEPTION NUMBERS ARE TO PUBLIC DOCUMENTS FILED IN THE RECORDS OF ROUTT COUNTY, COLORADO.
 - PROJECT BENCHMARK: A RECOVERED REBAR W/ ORANGE PLASTIC CAP AS SHOWN HEREON, HAVING AN ELEVATION OF 6727.32' BASED ON THE NORTH AMERICAN VERTICAL DATUM OF 1988 (NAV88) AS SHOWN HEREON.
 - CONTOUR INTERVAL = 1 FOOT
 - SNOW REMOVAL IS THE RESPONSIBILITY OF THE DOWNTOWN RIVERVIEW METRO DISTRICT AND WILL BE HAULED OFFSITE AS REQUIRED.

Issue Dates:

DATE	DESCRIPTION
09/08/2023	DEVELOPMENT PLAN
11/16/2023	DEVELOPMENT PLAN 2ND SUBMITTAL