

STRUCTURAL GENERAL NOTES

DESIGN LOADS:

1. DESIGN LOADS: 2021 INTERNATIONAL BUILDING CODE WITH ROUTT COUNTY REGIONAL BUILDING DEPARTMENT AMENDMENTS, ASCE 7-16
2. RISK CATEGORY: II STANDARD
3. GROUND SNOW LOAD: 122 PSF
4. WIND:

A. BASIC DESIGN WIND SPEED, V, (3-SECOND GUST)

115 MPH

B. ALLOWABLE STRESS DESIGN WIND SPEED, V_{ASD}, (3-SECOND GUST)

90 MPH

C. WIND EXPOSURE

C

D. GROUND ELEVATION FACTOR

0.78
4. SEISMIC:

A. SPECTRAL RESPONSE ACCELERATION PARAMETERS

1. SHORT PERIOD

a. S_s

0.593g

b. S₁

0.499g

2. ONE SECOND

a. S₁

0.103g

b. S₀₁

0.103g

B. SOILS SITE CLASS

C

C. SEISMIC IMPORTANCE FACTOR

1.00

292161

292162

292163

292164

292165

292166

292167

292168

292169

292170

292171

292172

292173

292174

292175

292176

292177

292178

292179

292180

292181

292182

292183

292184

292185

292186

292187

292188

292189

292190

292191

292192

292193

292194

292195

292196

292197

292198

292199

292200

292201

292202

292203

292204

292205

292206

292207

292208

292209

292210

292211

292212

292213

292214

292215

292216

292217

292218

292219

292220

292221

292222

292223

292224

292225

292226

292227

292228

292229

292230

292231

292232

292233

292234

292235

292236

292237

292238

292239

292240

292241

292242

292243

292244

292245

292246

292247

292248

292249

292250

292251

292252

292253

292254

292255

292256

292257

292258

292259

292260

292261

292262

292263

292264

292265

292266

292267

292268

292269

292270

292271

292272

292273

292274

292275

292276

292277

292278

292279

292280

292281

292282

292283

292284

292285

292286

292287

292288

292289

292290

292291

292292

292293

292294

292295

292296

292297

292298

292299

292300

292301

292302

292303

292304

292305

292306

292307

292308

292309

292310

292311

292312

292313

292314

292315

292316

292317

292318

292319

292320

292321

292322

292323

292324

292325

292326

292327

292328

292329

292330

292331

292332

292333

292334

292335

292336

292337

292338

292339

292340

292341

292342

292343

292344

292345

292346

292347

292348

292349

292350

292351

292352

292353

292354

292355

292356

292357

292358

292359

292360

292361

292362

292363

292364

292365

292366

292367

292368

292369

292370

292371

292372

292373

292374

292375

292376

292377

292378

292379

292380

292381

292382

292383

292384

292385

292386

292387

292388

292389

292390

292391

292392

292393

292394

292395

292396

292397

292398

292399

292400

292401

292402

292403

292404

292405

292406

292407

292408

292409

292410

292411

292412

292413

292414

292415

292416

292417

292418

292419

292420

292421

292422

292423

292424

292425

292426

292427

292428

292429

292430

292431

292432

292433

292434

292435

292436

292437

292438

292439

292440

292441

292442

292443

292444

292445

292446

292447

292448

292449

292450

292451

292452

292453

292454

292455

292456

292457

292458

292459

292460

292461

292462

292463

292464

292465

292466

292467

292468

292469

292470

292471

292472

292473

292474

292475

292476

292477

292478

292479

292480

292481

292482

292483

292484

292485

292486

292487

292488

292489

292490

292491

292492

292493

292494

292495

292496

292497

292498

292499

292500

292501

292502

292503

292504

292505

292506

292507

292508

292509

292510

292511

292512

292513

292514

292515

292516

292517

292518

292519

292520

292521

292522

292523

292524

292525

292526

292527

292528

292529

292530

292531

292532

292533

292534

292535

292536

292537

292538

292539

292540

292541

292542

292543

292544

292545

292546

292547

292548

292549

292550

292551

292552

292553

292554

292555

292556

292557

292558

292559

292560

292561

292562

292563

292564

292565

292566

292567

292568

292569

292570

292571

292572

292573

292574

292575

292576

292577

292578

292579

292580

292581

292582

292583

292584

292585

292586

292587

292588

292589

292590

292591

292592

292593

292594

292595

292596

292597

292598

292599

292600

292601

292602

292603

292604

292605

292606

292607

292608

292609

292610

292611

292612

292613

292614

292615

292616

292617

292618

292619

292620

292621

292622

292623

292624

292625

292626

292627

292628

292629

292630

292631

292632

292633

292634

292635

292636

292637

292638

292639

292640

292641

292642

292643

292644

292645

292646

292647

292648

292649

292650

292651

292652

292653

292654

292655

292656

292657

292658

292659

292660

292661

292662

292663

292664

292665

292666

292667

292668

292669

292670

292671

292672

292673

292674

292675

292676

292677

292678

292679

292680

292681

292682

292683

292684

292685

292686

292687

292688

292689

292690

292691

292692

292693

292694

292695

292696

292697

292698

292699

292700

292701

292702

292703

292704

292705

292706

292707

292708

292709

292710

292711

292712

292713

292714

292715

292716

292717

292718

292719

292720

292721

292722

292723

292724

292725

292726

292727

292728

292729

292730

292731

292732

292733

292734

292735

292736

292737

292738

292739

292740

292741

292742

292743

292744

292745

292746

292747

292748

292749

292750

292751

292752

292753

292754

292755

292756

292757

292758

292759

292760

292761

292762

292763

292764

292765

292766

292767

292768

292769

292770

292771

292772

292773

292774

292775

292776

292777

292778

292779

292780

292781

292782

292783

292784

292785

292786

292787

292788

292789

292790

292791

292792

292793

292794

292795

292796

292797

292798

292799

292800

292801

292802

292803

292804

292805

292806

292807

292808

292809

292810

292811

292812

292813

292814

292815

292816

292817

292818

292819

292820

292821

292822

292823

292824

292825

292826

292827

292828

292829

292830

292831

292832

292833

292834

292835

292836

292837

292838

292839

292840

292841

292842

292843

292844

292845

292846

292847

292848

292849

292850

292851

292852

292853

292854

292855

292856

292857

292858

292859

292860

292861

292862

292863

292864

292865

292866

292867

292868

292869

292870

292871

292872

292873

292874

292875

292876

292877

292878

292879

292880

292881

292882

292883

292884

292885

292886

292887

292888

292889

292890

292891

292892

292893

292894

292895

292896

292897

292898

292899

292900

292901

292902

292903

292904

292905

292906

292907

292908

292909

292910

292911

292912

292913

292914

292915

292916

292917

292918

292919

292920

292921

292922

292923

292924

292925

292926

292927

292928

292929

292930

292931

292932

292933

292934

292935

292936

292937

292938

292939

292940

292941

292942

292943

292944

292945

292946

292947

292948

292949

292950

292951

292952

292953

292954

292955

292956

292957

292958

292959

292960

292961

292962

292963

292964

292965

292966

292967

292968

292969

292970

292971

292972

292973

292974

292975

292976

292977

292978

292979

292980

292981

292982

292983

292984

292985

292986

292987

292988

292989

292990

292991

292992

292993

292994

292995

292996

292997

292998

292999

293000

293001

293002

293003

293004

293005

293006

293007

293008

293009

293010

293011

293012

293013

293014

293015

293016

293017

293018

293019

293020

293021

293022

293023

293024

293025

293026

293027

293028

293029

293030

293031

293032

293033

293034

293035

293036

293037

293038

293039

293040

293041

293042

293043

293044

293045

293046

293047

293048

293049

293050

293051

293052

293053

293054

293055

293056

293057

293058

293059

293060

293061

293062

293063

293064

293065

293066

293067

293068

293069

293070

293071

293072

293073

293074

293075

293076

293077

293078

293079

293080

293081

293082

293083

293084

293085

293086

293087

293088

293089

293090

293091

293092

293093

293094

293095

293096

293097

293098

293099

293100

293101

293102

293103

293104

293105

293106

293107

293108

293109

293110

293111

293112

293113

293114

293115

293116

293117

293118

293119

293120

293121

293122

293123

293124

293125

293126

293127

293128

293129

293130

293131

293132

293133

293134

293135

293136

293137

293138

293139

293140

293141

293142

293143

293144

293145

293146

293147

293148

293149

293150

293151

293152

293153

293154

293155

293156

293157

293158

293159

293160

293161

293162

293163

293164

293165

293166

293167

293168

293169

293170

293171

293172

293173

293174

293175

293176

293177

293178

293179

293180

293181

293182

293183

293184

293185

293186

293187

293188

293189

293190

293191

293192

293193

293194

293195

293196

293197

293198

293199

293200

293201

293202

293203

293204

293205

293206

293207

293208

293209

293210

293211

293212

293213

293214

293215

293216

293217

293218

293219

293220

293221

293222

293223

293224

293225

293226

293227

293228

293229

293230

293231

293232

293233

293234



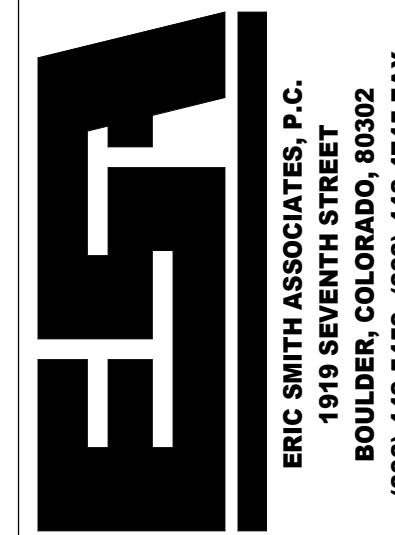
NOTICE: DUTY OF COOPERATION

Release of these plans contemplates further cooperation among the owner, his contractor and the architect. Design and construction are complex. Although the architect and his consultants have performed their services with due care and diligence they cannot guarantee perfection. Communication is imperfect and every contingency cannot be anticipated. Any delay or change in the work to be done by the use of these plans shall be reported immediately to the architect. Failure to notify the architect compounds misunderstanding and increases construction costs, failure to cooperate by a simple notice to the architect to relieve the architect from responsibility for any consequences. Changes made without the architect's consent of the architect are unauthorized and shall relieve the architect of responsibility for all consequences arising out of such changes.

All design, documents and data prepared by Eric Smith Associates, P.C. as instruments of service shall remain property of Eric Smith Associates, P.C. and shall not be copied, changed or disclosed in any form whatsoever without first obtaining the express written consent of Eric Smith Associates, P.C.

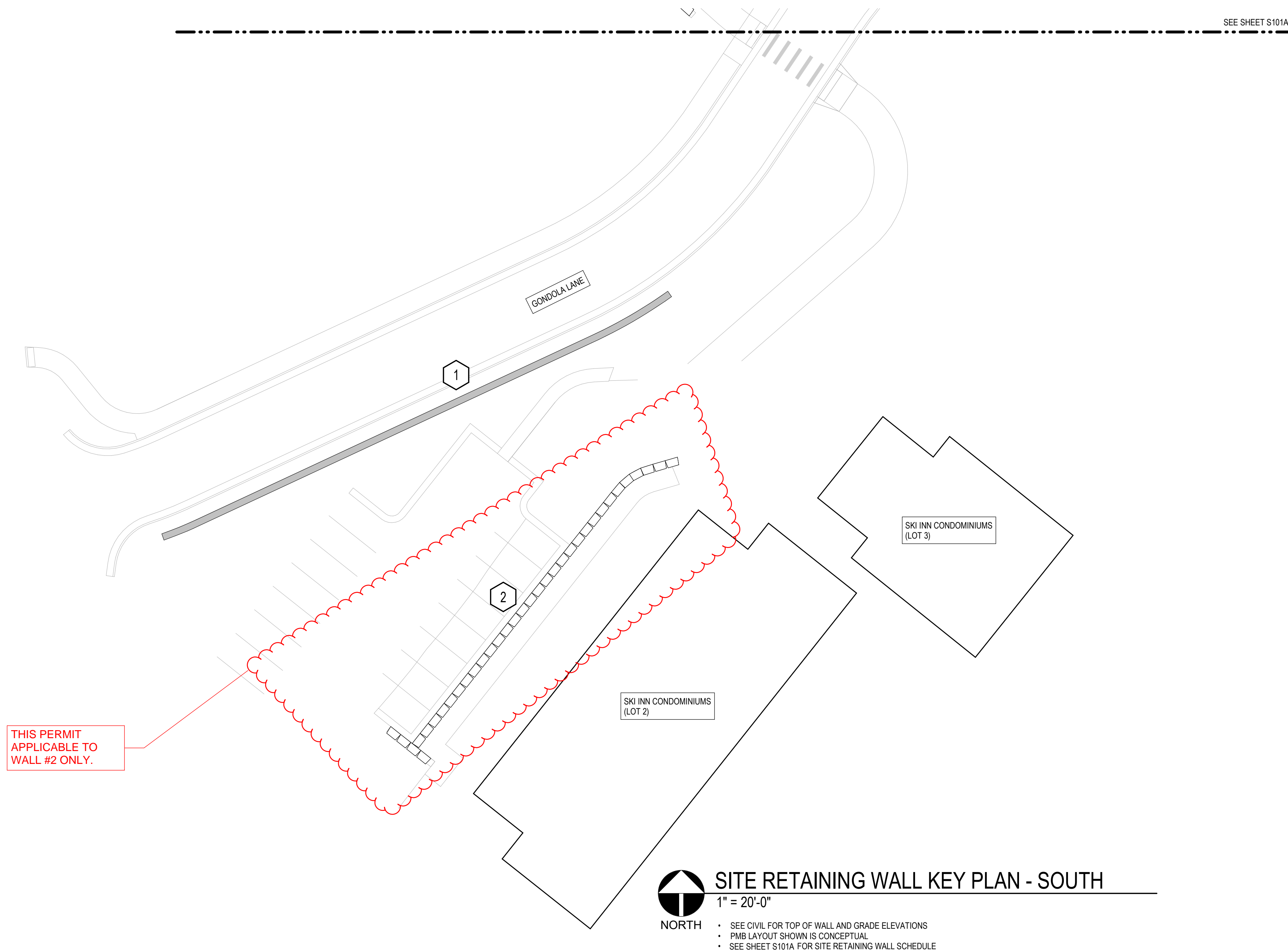
[illegible]

**THE ASTRID
SITE RETAINING WALLS**
2410 SKI TRAIL LANE
STEAMBOAT SPRINGS, CO



Job Number:	-
Date:	02/23/24
Drawn By:	DJM
Checked By:	CDT

Project Phase
PERMIT
Sheet Title
SITE RETAINING WALL KEY PLAN - SOUTH
Sheet Number
S101B



All design, documents and data prepared by Eric Smith Associates, P.C. as instruments of service shall remain property of Eric Smith Associates, P.C. and shall not be copied, changed or disclosed in any form whatsoever without first obtaining the express written consent of Eric Smith Associates, P.C.

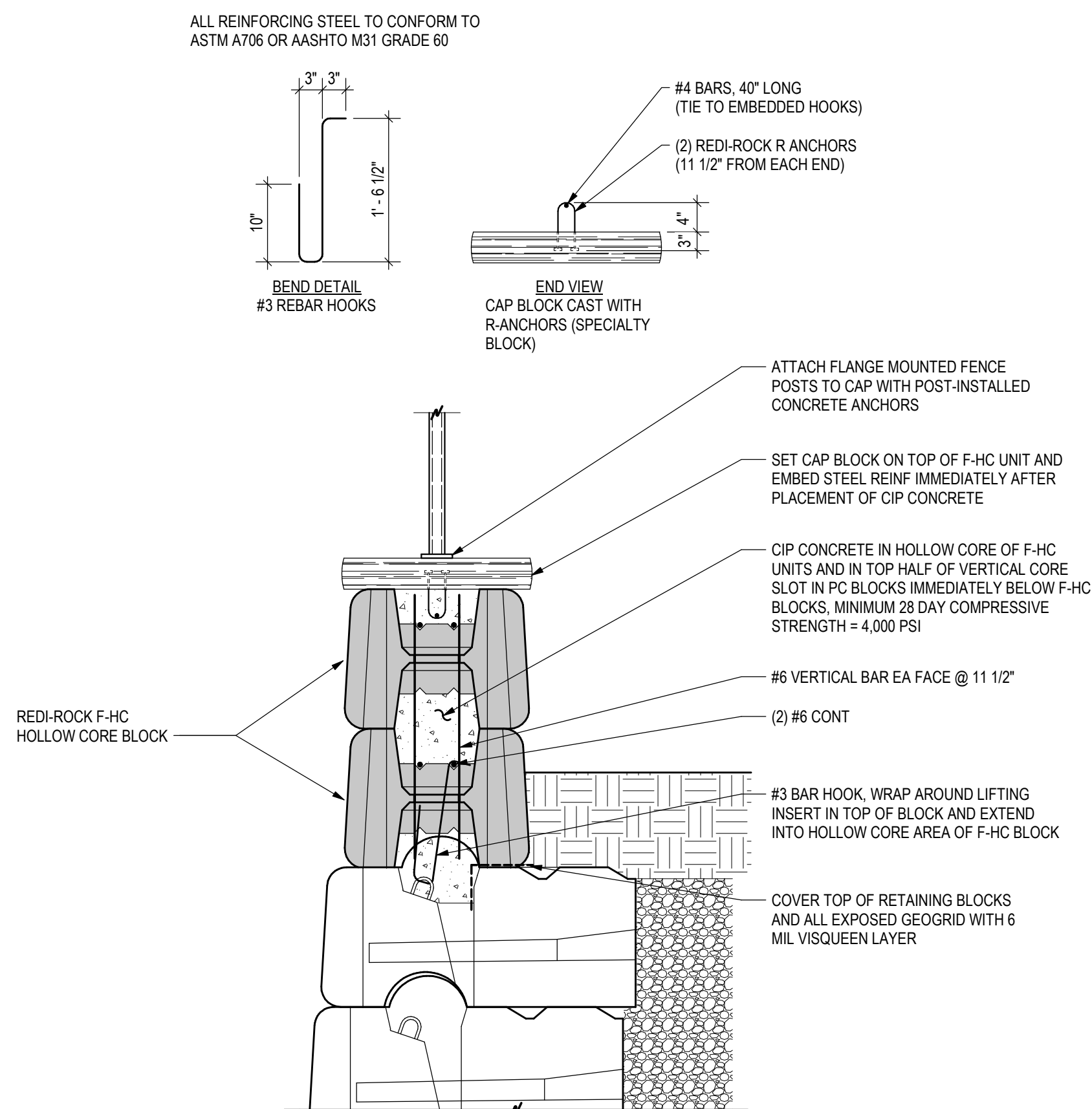
[illegible]

**THE ASTRID
SITE RETAINING WALLS**
2410 SKI TRAIL LANE
STEAMBOAT SPRINGS, CO



Project Phase
PERMIT
Sheet Title
PMB SCHEDULES & TYPICAL DETAILS

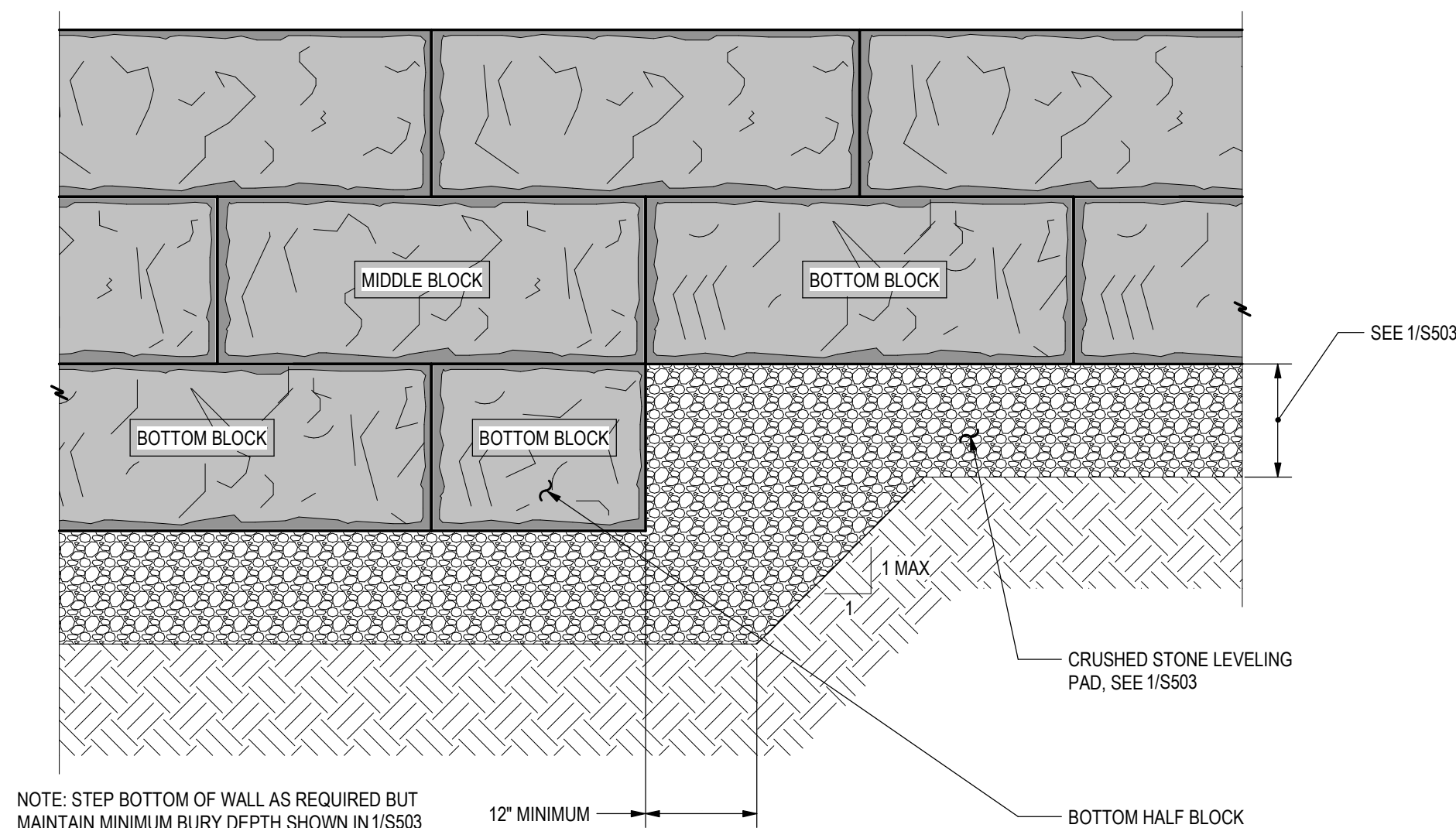
Sheet Number
S503



3
S503

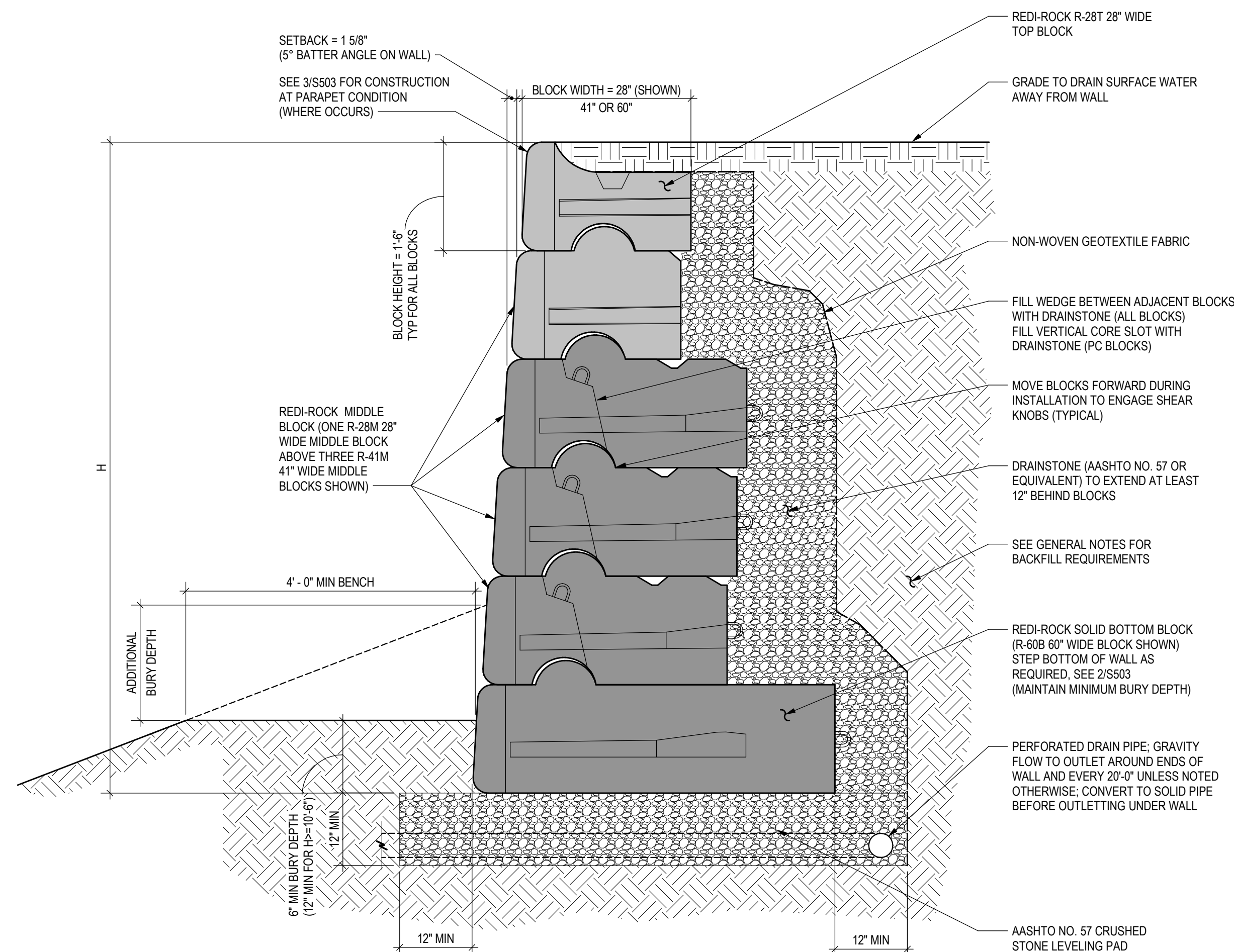
TYP PMB GRAVITY RETAINING WALL PARAPET

3/4" = 1'-0"



ELEVATION VIEW - TYP BOTTOM OF PMB GRAVITY
RETAINING WALL STEP

PMB RETAINING WALL SCHEDULE							
	H						
	3'-0"	4'-6"	6'-0"	7'-6"	9'-0"	10'-6"	12'-0"
# OF 28" WIDE BLOCKS	1	1	1	1	1	1	1
# OF 41" WIDE BLOCKS	1	2	2	3	4	4	4
# OF 60" WIDE BLOCKS	0	0	1	1	1	2	3
TOTAL # OF BLOCKS	2	3	4	5	6	7	8



1 **TYP PMB GRAVITY RETAINING WALL**

S503

3/4" = 1'-0"

3/4" 0 6" 1' 2' 3'

- SEE CIVIL DRAWINGS FOR RETAINING WALL LOCATIONS AND GRADING INFORMATION
- SEE SCHEDULE FOR THE REQUIRED NUMBER OF BLOCKS FOR EACH GIVEN RETAINED HEIGHT, H. INSTALL THE WIDEST UNITS ON THE BOTTOM AND NARROWER UNITS FURTHER UP THE WALL
- SUBSEQUENT COURSES OF BLOCKS SHALL BE INSTALLED WITH A RUNNING BOND
- PROVIDE CORNER BLOCKS AT OUTSIDE CORNERS AND ENDS, SEE REDI-ROCK TYPICAL DETAILS