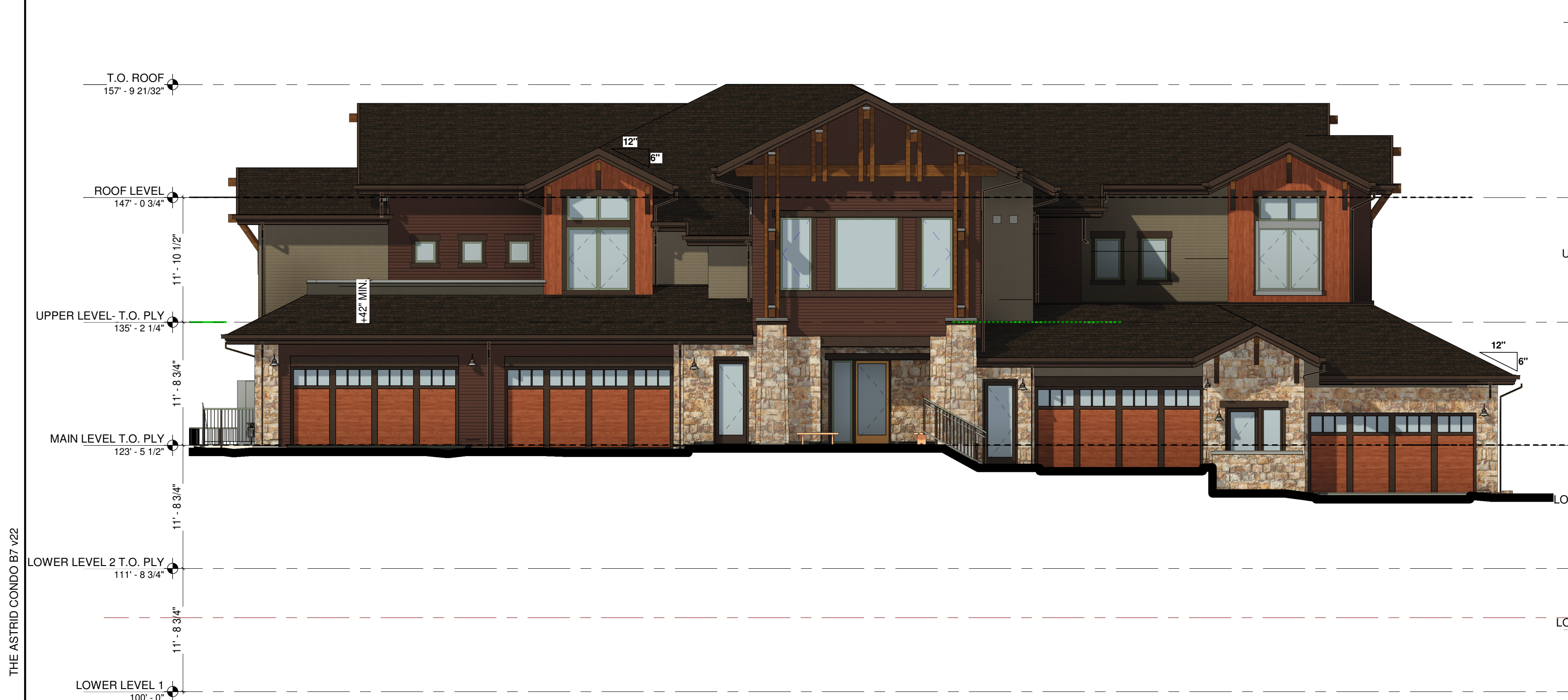




4 DP/FDP - SOUTH ELEVATION
DP-3 1/8" = 1'-0"



3 DP/FDP - WEST ELEVATION
DP-3 1/8" = 1'-0"

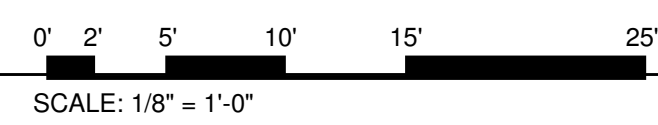


2 DP/FDP - NORTH ELEVATION
DP-3 1/8" = 1'-0"



1 DP/FDP - EAST ELEVATION
DP-3 1/8" = 1'-0"

BUILDING 7



NOTICE: DUTY OF COOPERATION

Release of these plans contemplates further cooperation among the owner, his contractor and the architect. Design and construction are complex. The architect and architect-engineer must be able to perform their services with due care and diligence, they cannot guarantee perfection. Communication is important and necessary to the successful completion of any project. Any ambiguity or discrepancy discovered by the use of these plans shall be reported immediately to the architect. Failure to notify the architect compounds miscommunication and increases the risk of error. A failure to cooperate by a simple notice to the architect shall relieve the architect from responsibility for the consequent changes. Changes made without the consent of the architect are unauthorized and shall relieve the architect of responsibility for all consequences arising out of such changes.

All design, documents and data prepared by Eric Smith Associates, P.C. as instruments of service shall be the property of Eric Smith Associates, P.C. and shall not be copied, changed or disclosed in any form whatsoever without first obtaining the express written consent of Eric Smith Associates, P.C.

Eric Smith Associates, P.C.

[illegible]

ASTRID BUILDING 7
STEAMBOAT SPRINGS COLORADO



Job Number:	22014
Date:	5/10/24
Drawn By:	JP
Checked By:	ESA

Project Phase
PERMIT
Sheet Title
BUILDING ELEVATIONS

Sheet Number
DP-3