



WALK-IN COOLERS AND FREEZERS

MIAMI, FLORIDA  
PHONE: (305) 883-5581  
LOS ANGELES, CALIFORNIA  
PHONE: (626) 508-0920  
www.arcticwalkin.com



Intertek  
COMFORMS TO  
NSF STD 7

Intertek  
COMFORMS TO  
UL STD 471

Revisions:

No.	DATE & BY
1	00/00/00 BY XX
2	---
3	---
4	---
5	---
6	---
7	---

☐ APPROVED AS DRAWN

☐ RESUBMIT

SIGNED \_\_\_\_\_

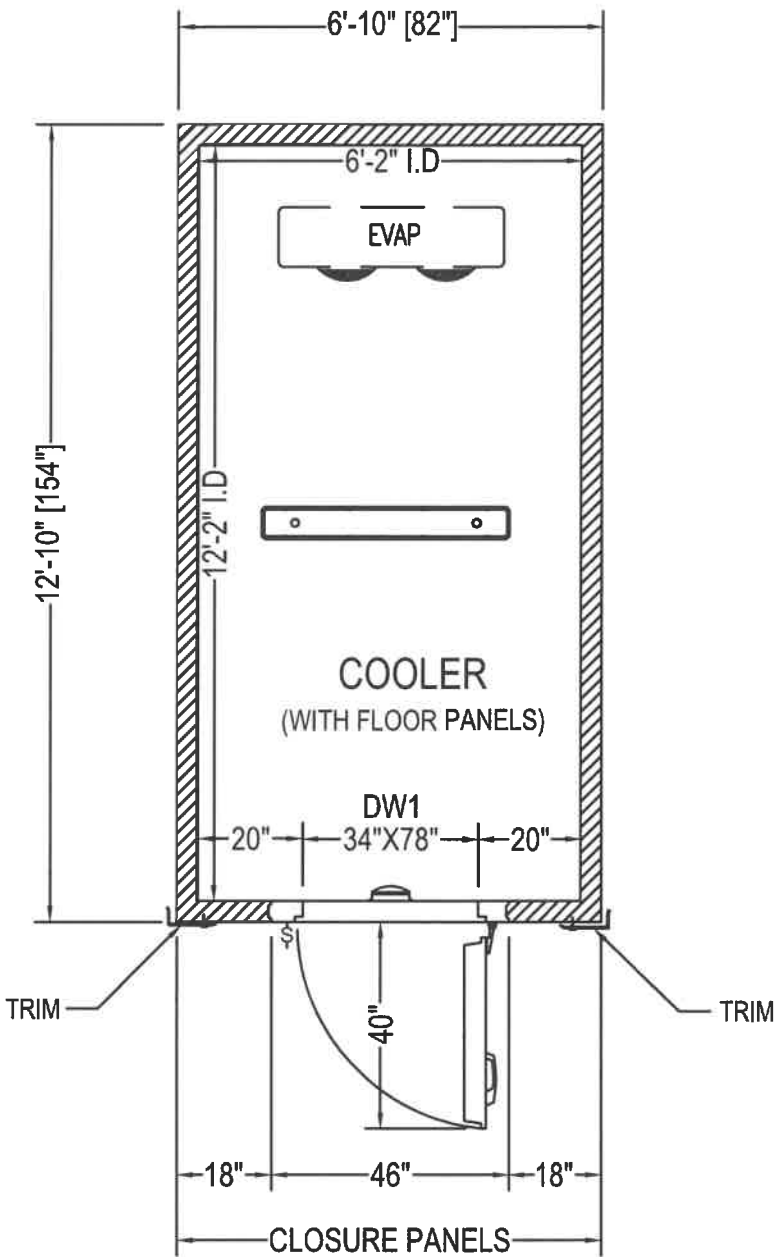
DATE: \_\_\_\_\_

CONFIDENTIAL

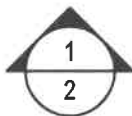
THE DRAWINGS, TECHNICAL DATA,  
AND ALL OTHER INFORMATION SET  
FORTH IN THIS DOCUMENT  
COMPRISE TRADE SECRETS AND  
CONFIDENTIAL INFORMATION THAT  
IS THE EXCLUSIVE PROPERTY OF  
ARCTIC INDUSTRIES, LLC.

USE OF SUCH INFORMATION IS  
LIMITED TO THE PURPOSE FOR  
WHICH IT WAS PROVIDED AND NO  
RECIPIENT IS PERMITTED TO USE,  
COPY, OR DISCLOSE SUCH  
INFORMATION EXCEPT AS  
EXPRESSLY AUTHORIZED BY  
ARCTIC INDUSTRIES, LLC.

Customer Name:		
BARGREEN ELLIGSON/THE RESTAURANT SOURCE		
Project Name:		P.O#: P.O
LOS LOCOS		
Drawn By:	Checked By:	DRW No:
CARMEN	MARIA	Q167100
Scale:	Created:	Sheet No:
As Shown	6/1/2021	1 TO 5



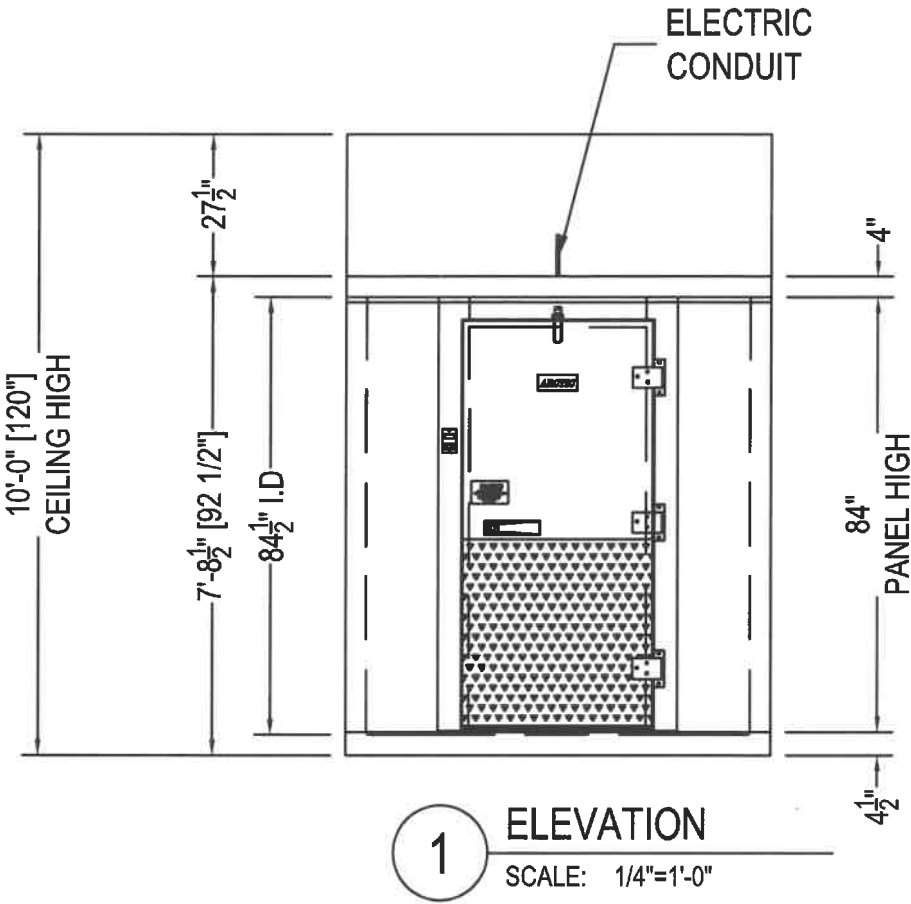
1 PLAN VIEW  
SCALE: 1/4"=1'-0"



ok as shown  
6/15/21  
AA

Reviewed for  
Code Compliance

03/22/2024



OK as  
shown  
6/15/21  
AA

☐ APPROVED AS DRAWN

☐ RESUBMIT

SIGNED \_\_\_\_\_

DATE: \_\_\_\_\_



Customer Name:

BARGREEN ELLIGSON/THE RESTAURANT SOURCE

Project Name: P.O#: P.O

LOS LOCOS

Drawn By:	Checked By:	DRW No:
CARMEN	MARIA	Q167100
Scale:	Created:	Sheet No:
As Shown	6/1/2021	2 TO 5

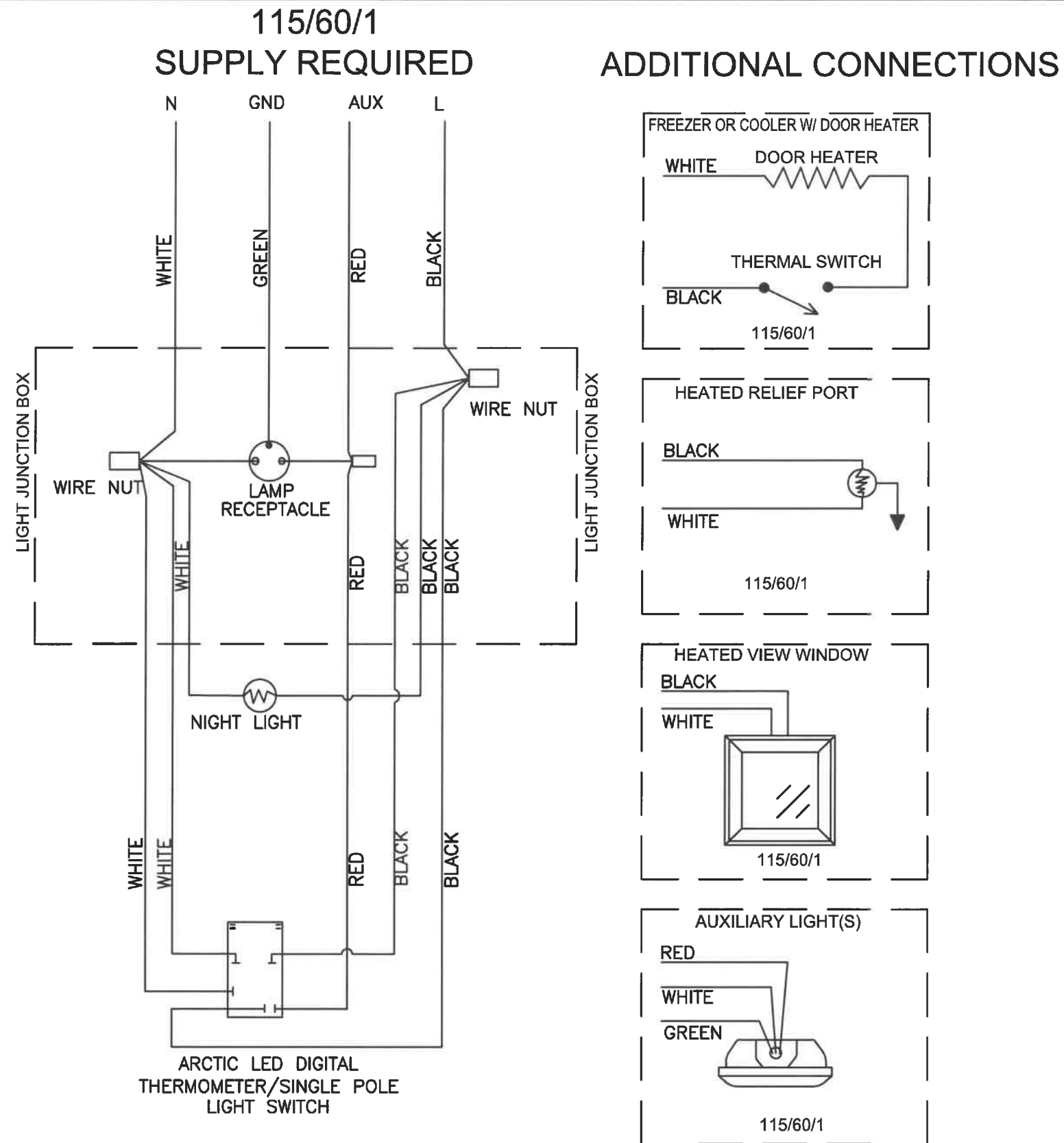
03/22/2024

CONSTRUCTION: 4" POLYURETHANE FOAM IN PLACE PANELS, R-VALUE R28 FOR COOLER AND R32 FOR FREEZER, ASTM E84 / UL 723 INNER FOAM CORE: FLAME SPREAD ≤25, SMOKE DEVELOPED ≤450

PANEL FINISHES				DOOR DESCRIPTION																																																																																																																																																																																							
<div>WALL INTERIOR: ACRYLUME OR G90 GALVANIZED - 26 GA - STUCCO EMBOSSED</div> <div>WALL EXTERIOR: ACRYLUME OR G90 GALVANIZED - 26 GA - STUCCO EMBOSSED</div> <div>CEILING INTERIOR: G90 GALVANIZED - 26 GA - STUCCO EMBOSSED - WHITE</div> <div>CEILING EXTERIOR: ACRYLUME OR G90 GALVANIZED - 26 GA - STUCCO EMBOSSED</div> <div>FLOOR INTERIOR: ALUMINUM - .063" - SMOOTH - NSF</div> <div>FLOOR EXTERIOR: ACRYLUME OR G90 GALVANIZED - 26 GA - STUCCO EMBOSSED</div>				<div>COOLER DOOR:</div> <div>INTERIOR FINISH: ACRYLUME OR G90 GALVANIZED - 26 GA - STUCCO EMBOSSED</div> <div>EXTERIOR FINISH: ACRYLUME OR G90 GALVANIZED - 26 GA - STUCCO EMBOSSED</div>						<div>ACCESSORIES:</div> <div>HINGE 1255 - CAM LIFT - BRUSHED CHROME</div> <div>DOOR CLOSER 1094 – W/HOOK – BRUSHED CHROME</div> <div>HANDLE 1229C - KEY LOCK - BRUSHED CHROME</div> <div>DIAMOND TREAD KICKPLATE – 36" HIGH – INT/EXT</div> <div>VAPOR LIGHT - LED (1800NM) WITH NIGHT LIGHT</div> <div>LIGHT/THERMOMETER – LED – SINGLE POLE (#1)</div> <div>HEATED PRESSURE RELIEF PORT 1825 – 115V FREEZER ONLY</div> <div>HEATER – DOOR FRAME FREEZER ONLY</div> <div>THERMOSTAT – PEPI-B FREEZER ONLY</div> <div>CONDUIT THROUGH TOP OF DOOR (PER DOOR)</div>																																																																																																																																																																																	
WALK-IN ACCESSORIES																																																																																																																																																																																											
<div>( 1 )- EA AIR CURTAIN, PLASTIC STRIP (UP TO 41" X 80" DOOR)</div> <div>( 1 )- EA LED 4' LIGHT FIXTURE</div> <div>( 20 )-SQ.FT TRIM STRIPS - MATCHING EXTERIOR FINISH</div> <div>( 14 )-SQ.FT CLOSURE PANELS - MATCHING EXTERIOR FINISH</div>																																																																																																																																																																																											
NOTE: SEE LAST PAGE FOR DETAILS																																																																																																																																																																																											
GENERAL NOTES																																																																																																																																																																																											
<div>FLOOR MUST BE LEVEL WITHIN 3/16" PER 10', SMOOTH, AND CLEAR OF OBSTRUCTIONS PRIOR TO INSTALLING WALK-IN PANELS.</div> <div>A 2" MINIMUM GAP ALL AROUND WALK-IN IS REQUIRED FOR PROPER AIR CIRCULATION. HIGH HUMIDITY ENVIRONMENTS MAY REQUIRE FORCED VENTILATION IN GAP TO PREVENT CONDENSATION.</div> <div>FLOOR PANELS (WHEN PROVIDED) ARE DESIGNED TO WITHSTAND A 600 POUND PER SQUARE FOOT STATIONARY LOAD. DAMAGE DUE TO FORKLIFTS, PALLET JACKS, CARTS, OR ANY TYPE OF ROLLING TRAFFIC IS NOT COVERED BY WARRANTY.</div> <div>STANDARD PANELS HAVE A STUCCO-EMBOSSED FINISH (TEXTURE) THAT HELPS REDUCE IRREGULARITIES IN THE PANEL SURFACE. ON REQUEST WE WILL PROVIDE A NON-TEXTURED (SMOOTH FINISH). SMOOTH FINISH PANELS TYPICALLY EXPERIENCE WRINKLING AND OTHER FLATNESS IMPERFECTIONS SUCH AS OIL-CANNING WHICH IS NOT COVERED BY WARRANTY.</div> <div>WALK-IN ROOF IS NOT DESIGNED FOR FOOT TRAFFIC OR STORAGE. SNOW/ICE LOADS (OUTDOOR BOXES): TO AVOID CEILING FAILURE/COLLAPSE DUE TO SNOW OR ICE (NOT COVERED BY PANEL WARRANTY), SNOW OR ICE ACCUMULATION OF MORE THAN 3" MUST BE CAREFULLY REMOVED IN A MANNER WHICH DOES NOT CAUSE DAMAGE OR TEAR THE MEMBRANE ROOF COVER.</div> <div>FOR QUARRY TILE OR CONCRETE FLOORS, THE METAL FACING MAY BE SUSCEPTIBLE TO STAINING DUE TO MOISTURE CREATED BY HYDRATION OF CONCRETE-TYPE MATERIALS. EACH ROOM MUST BE PROPERLY VENTILATED AND SPECIAL PRECAUTIONS TAKEN WHEN USING MURIATIC ACID DUE TO ITS EFFECTS ON ALUMINUM, GALVANIZED STEEL, AND STAINLESS STEEL.</div> <div>METAL SURFACE MUST BE PROTECTED FROM LIME AND CONCRETE RELATED COMPONENTS. PROTECTION OF ONE OF THE FOLLOWING TYPES MUST BE APPLIED BETWEEN THE CONCRETE AND METAL SURFACES: LIQUID TAR BRUSHED OR SPRAYED ABOVE THE CONCRETE LINE, HEAVY EPOXY PAINT, 6 MIL POLYETHYLENE, OR A DOUBLE LAYER OF 30 LB ASPHALT IMPREGNATED ROOFING PAPER.</div>																																																																																																																																																																																											
<div><div><div>REFRIGERATION SPECIFICATIONS</div><table><tr><th>ITEM</th><th>QTY</th><th>HP</th><th>MANUFACTURE</th><th>MODEL</th><th>REFRIG</th><th>V/P/H</th><th>MCA</th><th>FANS</th><th colspan="2">CONNECTION</th><th colspan="3">DIMENSIONS(IN)</th><th>WEIGHT</th><th>BTUH</th></tr><tr><th></th><th></th><th></th><th></th><th></th><th></th><th></th><th></th><th></th><th>INLET</th><th>SUCTION</th><th>LENGTH</th><th>DEEP</th><th>HEIGHT</th><th>LBS</th><th></th></tr><tr><td colspan="7">SCROLL,REMOTE PREASSEMBLED, ECONET,AIR-COOLED,35°,OUTDOOR</td><td></td><td></td><td></td><td></td><td></td><td></td><td></td><td></td><td></td></tr><tr><td>1</td><td>1</td><td>1</td><td>RUSSELL C/U</td><td>RFO 100M4SDA</td><td>R448/449</td><td>208/230/1/60</td><td>15.0</td><td></td><td>3/8</td><td>5/8</td><td>26 1/4</td><td>28 1/4</td><td>18 3/4</td><td>195</td><td></td></tr><tr><td>2</td><td>1</td><td></td><td>RUSSELL COIL</td><td>RL6A073ADARE</td><td></td><td>115/1/60 EC</td><td>15.0</td><td>2</td><td>3/8</td><td>5/8</td><td>43 5/8</td><td>12 1/2</td><td>16 3/4</td><td>52</td><td></td></tr><tr><td colspan="3">ACCESSORIES</td><td colspan="3">(1)COMPRESSOR STAND U.L 36X72LONG W/18 LEGS</td><td></td><td></td><td></td><td></td><td></td><td></td><td></td><td></td><td></td><td></td></tr><tr><td colspan="16">NOTE: A LICENSED REFRIGERATION INSTALLER MUST DECIDE PLACEMENT OF EVAPORATOR(S) BASE ON SITE CONDITIONS,</td></tr><tr><td colspan="16">EVAPORATOR PLACEMENT ON DRAWING SHOULD BE USED FOR REFERENCE ONLY,</td></tr><tr><td colspan="6">DETAILED REFRIGERATION SPECIFICATIONS ARE AVAILABLE UPON REQUEST</td><td></td><td></td><td></td><td></td><td></td><td></td><td></td><td></td><td></td><td></td></tr><tr><td colspan="7">HERMETIC,REMOTE PRE-ASSEMBLED,AIR-COOLED,35°,OUTDOOR</td><td></td><td></td><td></td><td></td><td></td><td></td><td></td><td></td><td></td></tr></table></div><div><div><div><div><div>Arctic</div><div>WALK-IN COOLERS AND FREEZERS</div></div><div>MIAMI, FLORIDA PHONE: (305) 883-5581 www.arcticwalkins.com</div><div>LOS ANGELES, CALIFORNIA PHONE: (626) 508-0920</div></div><div><div><div>ETL</div><div>Intertek CONFORMS TO NSF STD 7</div></div><div><div>ETL</div><div>Intertek CONFORMS TO UL STD 471</div></div><div><div>UL</div><div>UL</div></div></div><div>Customer Name: BARGREEN ELLIGSON/THE RESTAURANT SOURCE Project Name: LOS LOCOS P.O#: P.O</div><table><tr><td>Drawn By:</td><td>Checked By:</td><td>DRW No:</td></tr><tr><td>CARMEN</td><td>MARIA</td><td>Q167100</td></tr><tr><td>Scale:</td><td>Created:</td><td>Sheet No:</td></tr><tr><td>As Shown</td><td>6/1/2021</td><td>3 TO 5</td></tr></table></div></div></div>																ITEM	QTY	HP	MANUFACTURE	MODEL	REFRIG	V/P/H	MCA	FANS	CONNECTION		DIMENSIONS(IN)			WEIGHT	BTUH										INLET	SUCTION	LENGTH	DEEP	HEIGHT	LBS		SCROLL,REMOTE PREASSEMBLED, ECONET,AIR-COOLED,35°,OUTDOOR																1	1	1	RUSSELL C/U	RFO 100M4SDA	R448/449	208/230/1/60	15.0		3/8	5/8	26 1/4	28 1/4	18 3/4	195		2	1		RUSSELL COIL	RL6A073ADARE		115/1/60 EC	15.0	2	3/8	5/8	43 5/8	12 1/2	16 3/4	52		ACCESSORIES			(1)COMPRESSOR STAND U.L 36X72LONG W/18 LEGS													NOTE: A LICENSED REFRIGERATION INSTALLER MUST DECIDE PLACEMENT OF EVAPORATOR(S) BASE ON SITE CONDITIONS,																EVAPORATOR PLACEMENT ON DRAWING SHOULD BE USED FOR REFERENCE ONLY,																DETAILED REFRIGERATION SPECIFICATIONS ARE AVAILABLE UPON REQUEST																HERMETIC,REMOTE PRE-ASSEMBLED,AIR-COOLED,35°,OUTDOOR																Drawn By:	Checked By:	DRW No:	CARMEN	MARIA	Q167100	Scale:	Created:	Sheet No:	As Shown	6/1/2021	3 TO 5
ITEM	QTY	HP	MANUFACTURE	MODEL	REFRIG	V/P/H	MCA	FANS	CONNECTION		DIMENSIONS(IN)			WEIGHT	BTUH																																																																																																																																																																												
									INLET	SUCTION	LENGTH	DEEP	HEIGHT	LBS																																																																																																																																																																													
SCROLL,REMOTE PREASSEMBLED, ECONET,AIR-COOLED,35°,OUTDOOR																																																																																																																																																																																											
1	1	1	RUSSELL C/U	RFO 100M4SDA	R448/449	208/230/1/60	15.0		3/8	5/8	26 1/4	28 1/4	18 3/4	195																																																																																																																																																																													
2	1		RUSSELL COIL	RL6A073ADARE		115/1/60 EC	15.0	2	3/8	5/8	43 5/8	12 1/2	16 3/4	52																																																																																																																																																																													
ACCESSORIES			(1)COMPRESSOR STAND U.L 36X72LONG W/18 LEGS																																																																																																																																																																																								
NOTE: A LICENSED REFRIGERATION INSTALLER MUST DECIDE PLACEMENT OF EVAPORATOR(S) BASE ON SITE CONDITIONS,																																																																																																																																																																																											
EVAPORATOR PLACEMENT ON DRAWING SHOULD BE USED FOR REFERENCE ONLY,																																																																																																																																																																																											
DETAILED REFRIGERATION SPECIFICATIONS ARE AVAILABLE UPON REQUEST																																																																																																																																																																																											
HERMETIC,REMOTE PRE-ASSEMBLED,AIR-COOLED,35°,OUTDOOR																																																																																																																																																																																											
Drawn By:	Checked By:	DRW No:																																																																																																																																																																																									
CARMEN	MARIA	Q167100																																																																																																																																																																																									
Scale:	Created:	Sheet No:																																																																																																																																																																																									
As Shown	6/1/2021	3 TO 5																																																																																																																																																																																									

<p>ELECTRICAL CONDUIT PENETRATION ①</p>	<p>REFRIGERATION OR SPRINKLER LINES PENETRATION ②</p>													
<p>PANEL TO CEILING CONNECTION ③</p>	<p>WALL TO WALL CONNECTION ④</p>	<p>DOOR DETAIL STUB UP CONDUIT ⑦</p>												
		<div><input type="checkbox"/> APPROVED AS DRAWN      SIGNED _____</div> <div><input type="checkbox"/> RESUBMIT      DATE: _____</div> <div> MIAMI, FLORIDA    LOS ANGELES, CALIFORNIA PHONE: (305) 883-5581    PHONE: (626) 508-0920 www.arcticwalkins.com</div> <div> Intertek CONFORMS TO NSF STD 7</div> <div> Intertek CONFORMS TO UL STD 471</div> <div>Customer Name: BARGREEN ELLIGSON/THE RESTAURANT SOURCE</div> <div>Project Name:      P.O#: P.O</div> <div>LOS LOCOS</div> <table border="1"><tr><td>Drawn By:</td><td>Checked By:</td><td>DRW No:</td></tr><tr><td>CARMEN</td><td>MARIA</td><td>Q167100</td></tr><tr><td>Scale:</td><td>Created:</td><td>Sheet No:</td></tr><tr><td>As Shown</td><td>6/1/2021</td><td>4 TO 5</td></tr></table>	Drawn By:	Checked By:	DRW No:	CARMEN	MARIA	Q167100	Scale:	Created:	Sheet No:	As Shown	6/1/2021	4 TO 5
Drawn By:	Checked By:	DRW No:												
CARMEN	MARIA	Q167100												
Scale:	Created:	Sheet No:												
As Shown	6/1/2021	4 TO 5												
<p>CLOSURE PANELS DETAIL ⑤</p>	<p>VERTICAL ANGLE TRIMS DETAILS ⑥</p>													






This is a 120VAC, 15 amp circuit auxiliary lights max combined draw 10 amps	
Manufacturer	Model
Keil (Component Hardware)	LED48X754
Kason	1802, 1802NL, 1803, 1804, 1806, 1807, 1808,
	1808NM, 1808FM, 1809, 1810EZ Series,
	1810LX, 1810LC, 1820
MaxLite	LSV Series, JJ Series
Osram Sylvania	30099 Series
Various	UL Listed 120VAC, no greater than 60 watts

NOTE: If Auxiliary Lights are not powered from the WIB Electrical Circuit, the Red Aux Wire must be removed by Qualified Electrician

NOTE: Door Heater , Thermal Switch and Heater Relief Port are connected for Freezers only

Optional: Cooler Doors with Door Heater and Thermal Switch

 **ELECTRICIAN TO PROVIDE SEAL-OFFS AT EVERY CONDUIT ENTRY ON WARMER SIDE OF PANEL. SEAL INSIDE AND AROUND ALL CONDUITS WHERE PASSING THROUGH PANELS. (SEE DETAIL PAGE)**



WALK-IN COOLERS AND FREEZERS  
FLORIDA, USA (305) 883-5581  
CALIFORNIA, USA (626) 508-0920

## WIRING DIAGRAM - SINGLE POLE SWITCH

DOOR MUST BE DISCONNECTED FROM ELECTRICAL SUPPLY FOR INSTALLATION AND ADJUSTMENTS.  
CONDUIT PENETRATIONS MUST BE SEALED INTERNALLY AND EXTERNALLY WHERE THEY ENTER THE WALK-IN BOX.

Update:06/01/21