

LEGEND NOTES

NOTES:

SYMBOLS SHOWN ARE STANDARD. VARIATION AND/OR COMBINATIONS MAY BE USED ON THE PLANS. THIS LIST SHOWS STANDARD SYMBOLS AND ALL MAY NOT APPEAR ON THE PROJECT DRAWINGS; HOWEVER, WHEREVER THE SYMBOL ON THE PROJECT DRAWINGS OCCUR, THE ITEM SHALL BE PROVIDED AND INSTALLED.

VARIATION AND/OR COMBINATION MAY BE USED ON THE PLANS SUCH AS: A LOWER CASE LETTER NEXT TO A SWITCH INDICATES THE SWITCH DESIGNATION. A NUMBER NEXT TO A DEVICE INDICATES A CIRCUIT NUMBER.

A LOWER CASE LETTER NEXT TO A SWITCH AND LIGHT FIXTURE INDICATES A SWITCH DESIGNATION.

AN UPPER CASE LETTER NEXT TO A SWITCH INDICATES THE FUNCTION OF THE SWITCH. REFER TO THE LIST BELOW. A COMBINATION OF DESIGNATIONS MAY BE USED.

AN UPPER CASE LETTER NEXT TO A LIGHT FIXTURE INDICATES THE TYPE OF FIXTURE. REFER TO THE LUMINAIRE SCHEDULE FOR FIXTURE SPECIFICATIONS.

CONDUIT OR WIRE CONCEALED IN WALL, C.G. (SOLID LINE TYPE)

CONDUIT OR WIRE UNDER FLOOR/UNDERGROUND (DASHED LINE TYPE)

DRAWING FLAG NOTES

ROOM 100 ROOM DESIGNATION

SWITCH LEGEND

\$ SINGLE POLE SWITCH

\$2 TWO POLE SWITCH

\$3 THREE-WAY SWITCH

\$4 FOUR-WAY SWITCH

\$0 DIMMER SWITCH

\$10 3 WAY DIMMER SWITCH - (40 INDICATES 4-WAY DIMMER)

\$M MANUAL ON / AUTO OFF VACANCY SENSOR SWITCH

\$M MANUAL ON / AUTO OFF DIMMING VACANCY SENSOR SWITCH

\$S AUTO ON / AUTO OFF OCCUPANCY SENSOR SWITCH

OS OS CEILING MOUNTED DUAL TECHNOLOGY OCCUPANCY SENSOR SWITCH

\$SC SCENE CONTROL STATION

\$MS UNIT LIGHTING MANAGEMENT CONTROL STATION

\$K KEY OPERATED LIGHT SWITCH

\$M MANUAL ON - TIME AUTO OFF LIGHT SWITCH

\$P PILOT LIGHT SWITCH

\$10 MANUAL MOTOR STARTER

\$OR DOOR ACTIVATED SWITCH

\$F CEILING FAN SWITCH

LIGHT FIXTURE LEGEND

A 1'x4' LED TROFFER OR DIRECT/INDIRECT TYPE FIXTURE GRID, FLANGE OR SURFACE MOUNTED

A 2'x4' LED TROFFER OR DIRECT/INDIRECT TYPE FIXTURE GRID, FLANGE OR SURFACE MOUNTED

A 2'x2' LED TROFFER OR DIRECT/INDIRECT TYPE FIXTURE GRID, FLANGE OR SURFACE MOUNTED

A1 OPEN STRIP LED FIXTURE

A1 WALL BRACKET FIXTURE

A1 WALL BRACKET LIGHT FIXTURE

A1 RECESSED DOWNLIGHT CAN FIXTURE

A1 SURFACE CEILING OR PENDANT MOUNTED FIXTURE

EX1 DOUBLE FACE EXIT SIGN, WALL AND CEILING MOUNTED

EM WALL MOUNTED EMERGENCY LIGHT

EMR EMERGENCY EXTERIOR EGRESS FIXTURE

ELECTRICAL EQUIPMENT LEGEND

BRANCH CIRCUIT PANELBOARD

TELEPHONE TERMINAL BOARD

ELECTRIC MOTOR

FUSED SAFETY SWITCH / DISCONNECT COMBINATION

MOTOR STARTER

CONTACTOR

CIRCUITRY HOMERUN: PANEL LA - CIR. #7

CONDUIT OR WIRE CONCEALED IN WALL, C.G. (SOLID LINE TYPE)

CONDUIT OR WIRE UNDER FLOOR/UNDERGROUND (DASHED LINE TYPE)

ELECTRICAL DEVICE LEGEND

CEILING JUNCTION BOX - SURFACE/FLUSH

WALL JUNCTION BOX - SURFACE/FLUSH

DUPLEX RECEPTACLE

FLOOR MOUNTED RECEPTACLE

SPLIT WIRED DUPLEX RECEPTACLE

CEILING MOUNTED DUPLEX RECEPTACLE

FOURPLEX RECEPTACLE

FLOOR MOUNTED FOURPLEX RECEPTACLE

APPLIANCE RECEPTACLE - 3 WIRE

RECEPTACLE WITH GROUND FAULT CIRCUIT INTERRUPTER

RECEPTACLE WITH USB CHARGING CAPABILITIES

RECEPTACLE MOUNTED ABOVE COUNTER

RECEPTACLE MOUNTED IN CASEWORK

RECEPTACLE - WITH GFCI AND WEATHER PROOF COVER

RECEPTACLE - WITH GFCI AND MOUNTED AT 44" A.F.F.

ELECTRIC HAND DRYER

THERMOSTAT

OPEN / CLOSE / STOP PUSH BUTTON

MAIN DISTRIBUTION GEAR LEGEND

PAD MOUNTED UTILITY TRANSFORMER

ELECTRICAL METER SHOWN IN ONE LINE

FUSED DISCONNECT 100A = AMP RATING 2P = NUMBER OF POLES CLASS T = FUSE CLASS

CIRCUIT BREAKER

ELECTRICAL POWER PANEL WITH MAIN LUG OR MAIN BREAKER PP1 PANEL NAME 225A MLO = MAIN LUG OR BREAKER SIZE 120/208V = PANEL VOLTAGE 3PH, 4W = PANEL PHASE, DISTRIBUTION TYPE

GENERAL ELECTRICAL NOTES:

1. ALL ELECTRICAL WORK TO COMPLY WITH LATEST EDITION OF NEC, IECC AND ALL APPLICABLE GOVERNING CODES.

2. FIELD COORDINATION DURING CONSTRUCTION IS IMPERATIVE. CONTRACTORS BIDDING THIS WORK MUST MAKE REASONABLE ALLOWANCES FOR UNFORESEEN CONTINGENCIES.

3. ELECTRIC UTILITY TO ADVISE OWNER AND/OR THE ELECTRICAL ENGINEER PRIOR TO SERVICE MODIFICATION REQUIRING COST TO THE OWNER.

WIRING:

1. ALL WIRING IS SHOWN DIAGRAMMATICALLY ON DRAWING, FIELD VERIFY ALL CONDITIONS PRIOR TO KNOU-IN.

2. ALL CONDUITS AND CONVEYANCES SHALL BE CONCEALED. IN THE EVENT THAT A NEW DEVICE IS BEING INSTALLED IN AN EXISTING DRYWALL PARTITION, PROVIDE A CUT IN TYPE BOX AND FISH FLEXIBLE CONDUIT DOWN INSIDE THE WALL FROM ABOVE THE CEILING AND REPAIR THE DRYWALL AROUND THE CONDUIT. TRANSITION TO EMT ONCE ABOVE THE CEILING.

3. SIZES OF WIRE AND CABLES ARE BASED UPON COPPER CONDUCTORS, UNLESS OTHERWISE INDICATED. ALL CIRCUITS SHALL CONTAIN (2) #12 AWG WITH (1) #12 GND IN 1/2" CONDUIT UNLESS NOTED OTHERWISE.

4. ALL BRANCH CIRCUITS WITH HOME RUNS OVER 50 FEET, WILL BE SIZED ONE SIZE LARGER.

5. ALL PENETRATIONS IN OR THROUGH FIRE RATED PARTITIONS SHALL BE FIRE STOPPED IN SUCH A MANNER THAT THE PENETRATION MATCHES THE FIRE RATING OF THE WALL.

6. THE ELECTRICAL CONTRACTOR IS RESPONSIBLE FOR ALL COORDINATION BETWEEN THE APPROPRIATE DISCIPLINES AND CONTRACTORS.

7. COORDINATE ALL DEVICES, FIXTURES AND HARDWARE COLOR SELECTIONS WITH THE ARCHITECT PRIOR TO MAKING SHOP DRAWING SUBMITTALS.

8. COORDINATE THE MOUNTING HEIGHTS OF ALL RECEPTACLES MOUNTED ABOVE COUNTERS, CASEWORK AND APPLIANCE RECEPTACLES WITH ARCHITECTURAL ELEVATIONS.

9. BRANCH CIRCUIT AND SPECIAL SYSTEMS WIRING FOR DEVICES ON WALLS IN FINISHED AREAS WHICH CANNOT BE CONCEALED SHALL BE INSTALLED IN SURFACE MOUNTED RACEWAY.

10. ALL EXPOSED CONDUITS, BOXES, ETC. IN ROOMS TO BE PAINTED SHALL BE PAINTED TO MATCH THE SURROUNDING SURFACE. EXPOSED CONDUITS, BOXES, ETC. IN ROOMS WHICH ARE NOT PAINTED MAY BE LEFT UNPAINTED. EXPOSED CONDUIT, BOXES, ETC. ON THE EXTERIOR OF BUILDINGS SHALL BE PAINTED TO MATCH THE SURROUNDING SURFACE AS CLOSELY AS POSSIBLE.

11. THE CONTRACTOR IS RESPONSIBLE FOR PATCHING, PAINTING, REPAIRING OR REPLACEMENT OF ALL WALLS, CEILING OR OTHER BUILDING ELEMENTS WHICH ARE DISTURBED AS PART OF THE DEMOLITION AND/OR INSTALLATION OF ELECTRICAL WORK.

12. PROVIDE ELECTRICAL CONNECTION TO ALL FIRE, SMOKE, AND FIRE / SMOKE DAMPERS INCLUDING POWER AND FIRE ALARM. VERIFY EXACT SIZE AND FINAL LOCATION OF ALL DAMPERS WITH THE MECHANICAL CONTRACTOR. ALL ROOFTOP UNITS RATED AT MORE THAN 2000 CFM WILL BE OUTFITTED WITH A DUCT DETECTOR IN THE RETURN DUCT. ALL ROOFTOP UNITS RATED AT MORE THAN 1500 CFM WILL BE OUTFITTED WITH A DUCT DETECTOR IN BOTH THE SUPPLY AND RETURN DUCT AT ROOFTOP LEVEL AND IN THE RETURN DUCT AT EVERY LEVEL THAT IS SERVED. ELECTRICAL CONTRACTOR WILL PROVIDE A REMOTE TEST STATION AND ALL WIRING NECESSARY TO COMPLETE INSTALLATION.

13. REFER TO THE MECHANICAL EQUIPMENT SCHEDULE FOR ADDITIONAL REQUIREMENTS ASSOCIATED WITH PLUMBING AND HVAC EQUIPMENT AND OWNER/GENERAL CONTRACTOR FURNISHED EQUIPMENT.

COMMUNICATION LEGEND

PLAIN DATA OUTLET

PLAIN DATA OUTLET WITH MOUNTING HEIGHT

COMBINATION DATA/TELEPHONE

FLOOR MOUNTED COMBINATION DATA/TELEPHONE

CEILING MOUNTED COMBINATION DATA/TELEPHONE

TELEVISION OUTLET

CLOCK ONLY

CLOCK / PA SPEAKER WALL MOUNTED

THERMAL OVERLOAD SWITCHES AND HEATERS, MANUAL MOTOR STARTERS

SQUARE SPEAKER

INTERCOM PUSH TO CALL SWITCH

WIRELESS ACCESS POINT ABOVE THE CEILING

PROJECTOR CONNECTION ABOVE THE CEILING

HDMI

WALL MOUNTED HDMI

FIRE ALARM EQUIPMENT LEGEND

FACP FIRE ALARM CONTROL PANEL

FAAP FIRE ALARM ANNUNCIATION PANEL

F FIRE ALARM PULL STATION

FH FIRE ALARM HORN

FS FIRE ALARM STROBE

FHS FIRE ALARM HORN STROBE

DD DUCT DETECTOR

SD SMOKE DETECTOR - PHOTOELECTRIC

SD SMOKE DETECTOR - IONIZATION

CS COMBINATION SMOKE / CARBON MONOXIDE DETECTOR

HD HEAT DETECTOR - 135° ALARM

RL REMOTE LAMP

FS FLOW SWITCH

TS TAMPER SWITCH

DH DOOR HOLD - MAGNETIC HOLD

SECURITY SYSTEM LEGEND

HC SECURITY CAMERA

DS ADA DOOR OPERATOR PUSH BUTTON

DS ALUMINUM DOOR STRIKE

CR CARD READER FOR DOOR OPERATOR

RESPONSIBLE DIVISION:

UNLESS OTHERWISE INDICATED ALL HEATING, VENTILATING, AIR CONDITIONING, PLUMBING, AND OTHER MECHANICAL EQUIPMENT, MOTORS, AND CONTROLS SHALL BE FURNISHED, SET IN PLACE AND WIRED AS FOLLOWS:

EQUIPMENT	FURNISHED	SET	POWER WIRED	CONTROL WIRED
COMBINATION MAGNETIC MOTOR STARTERS, MAGNETIC MOTOR STARTERS, VFDs AND CONTACTORS	23	23	26	--
FUSED AND UNFUSED DISCONNECT SWITCHES, THERMAL OVERLOAD SWITCHES AND HEATERS, MANUAL MOTOR STARTERS	23(1)	26	26(2)	23
MANUAL OPERATING AND MULTI-SPEED SWITCHES	23	26	26	26
CONTROLS, RELAYS, TRANSFORMERS	23	23	26	23
THERMOSTATS (LOW VOLTAGE) AND TIME SWITCHES	23	23	26	23
THERMOSTATS (LINE VOLTAGE)	23	23	26	26
TEMPERATURE CONTROL PANELS	23	23	26	23
MOTOR AND SOLENOID VALVES, DAMPER MOTORS, PE & EP SWITCHES	23	23(2)	--	23(2)
PUSH-BUTTON STATIONS AND PILOT LIGHTS	23	23(2)	--	23(2)
HEATING, COOLING, VENTILATION AND AIR CONDITIONING CONTROLS	23	23	26	23
EXHAUST FAN SWITCHES	23	26	26	23(2)

SUBSCRIPT FOOTNOTES:

1. MOTOR STARTER TO INCLUDE CONTROL TRANSFORMER, HOA SWITCH, (1) NO AND (1) NC AUXILIARY CONTACT, AND "ON" AND "OFF" PILOT LIGHTS.

2. IF ITEM IS FOR LINE VOLTAGE, SET IN PLACE AND CONNECT UNDER DIVISION 26. WHERE FACTORY MOUNTED ON EQUIPMENT OR ATTACHED TO PIPING OR DUCTS AND USING LINE VOLTAGE FURNISH AND SET UNDER DIVISION 23. CONNECT UNDER DIVISION 26.

ABBREVIATIONS:

44' MOUNTING HEIGHT ABOVE FINISHED FLOOR TO CENTER OF DEVICE	DIFF DIFFERENTIAL	HR HOUR	PT PRESSURE TRANSMITTER
A AMPS	DISCH DISCHARGE	HT HEIGHT	PTAC PACKAGED TERMINAL AIR CONDITIONER
A.D. ACCESS DOOR	DIV DIVISION	HTR HEATER	PV PLUS VALVE
AAV AIR ADMITTANCE VALVE	DN DOWN	HWR HEATING WATER RETURN	PVC POLYVINYL CHLORIDE
ABV ABOVE	DS DUCT SILENCER	HWS HEATING WATER SUPPLY	QTY QUANTITY
AC AIR CONDITIONING UNIT	DX DIRECT EXPANSION	HX HEAT EXCHANGER	RA RETURN AIR GRILLE / REGISTER
AC ABOVE COUNTER	(E) EXISTING	ID INSIDE DIAMETER	RCP REFLECTED CEILING PLAN
AD AREA DRAIN (SEE SYMBOLS)	EA EXHAUST AIR GRILLE/REGISTER	IG ISOLATED GROUND	RD ROOF DRAIN
A.F.C. ABOVE FINISHED CEILING	EAT ENTERING AIR TEMPERATURE	IN INCHES	REL RELIEF
A.F.G. ABOVE FINISHED GRADE	EC ELECTRICAL CONTRACTOR	INV INVERT	REDD REQUIRED
AIC AMPERE INTERRUPTING CAPACITY	ECC ECCENTRIC	JBOX JUNCTION BOX	RF RETURN FAN
A.F.F. ABOVE FINISHED FLOOR	EF EXHAUST FAN	K KELVIN	RH RELATIVE HUMIDITY
AHU AIR HANDLING UNIT	EFF EFFICIENCY	KW KILOWATT	RHC REHEAT COIL
ALUM ALUMINUM	EL ELEVATION	KVA KILO VOLT - AMPS	RLA RATED LOAD AMPS
AP ACCESS PANEL OR DOOR	ELEC ELECTRIC	L LENGTH	RM ROOM
ATS AUTOMATIC TRANSFER SWITCH	ELEV ELEVATOR	LAT LEAVING AIR TEMPERATURE	RMV REVOLUTIONS PER MINUTE
AV AUDIO / VIDEO	EM EMERGENCY FUNCTION	LV LEAVING DRY	SA SUPPLY AIR GRILLE / REGISTER
AVG AVERAGE	ENT ENTERING	LB POUND	SC SHORT CIRCUIT
AWG AMERICAN WIRE GAGE	EMT ELECTRIC METALLIC TUBE	LD LINEAR DIFFUSER	SCA SHORT CIRCUIT AVAILABLE
BAS BUILDING AUTOMATION SYSTEM	EQ EQUAL	LF LINEAR FEET	SCCR SHORT CIRCUIT CURRENT RATING
BB BASEBOARD	EQUI EQUIPMENT	LN LINEAR	SDH SCHEDULE
BD BACK DRAFT DAMPER	EQUIV EQUIVALENT	LQ LIQUID	SD SMOKE DAMPER
BFP BACK FLOW PREVENTOR	ES END SWITCH	LM LUMEN	SEF SMOKE EXHAUST FAN
BL BOILER	ESP EXTERNAL STATIC PRESSURE	LRA LOCKED ROTOR AMPS	SF SUPPLY FAN
BLOG BUILDING	ET EXPANSION TANK	LV LOUVER	SH SENSIBLE HEAT
BLW BELOW	EWC ELECTRIC WATER COOLER	LVG LEAVING	SH SHOWER
BOS BOTTOM OF BEAM	EWT ENTERING WATER TEMPERATURE	LWT LEAVING WATER TEMPERATURE	SP STATIC PRESSURE
BOD BOTTOM OF DUCT	EX EXHAUST	MBH THOUSANDS OF BTU PER HOUR	SPD SURGE PROTECTION DEVICE
BOP BOTTOM OF PIPE	EXPAN EXPANSION	MC MECHANICAL CONTRACTOR	SPEC SPECIFICATION
BSMT BASEMENT	EXT EXTERNAL	MCA MINIMUM CIRCUIT AMPACITY	SQ SQUARE
BTU BRITISH THERMAL UNIT	F DEGREES FAHRENHEIT	MD MOTORIZED DAMPER	SS STAINLESS STEEL
C CHILLER	FA FREE AREA	NDP MAIN DISTRIBUTION PANEL	SS SAFETY SHOWER
CAP CAPACITY	FC FAN COIL UNIT	MED MEDIUM	STD STANDARD
CB CIRCUIT BREAKER	FC FOOTCANDLE	MFR MANUFACTURER	STL STEEL
CBV CIRCUIT BALANCING VALVE	FCV FLOW CONTROL VALVE	MIN MINIMUM	SYS SYSTEM
CCT CORRELATED COLOR TEMPERATURE	FD FIRE DAMPER	MSC MISCELLANEOUS	TEMP TEMPERATURE
CKT CIRCUIT	FD FLOOR DRAIN	MLO MAIN LUG ONLY	TR TRANSFER GRILLE / REGISTER
CFH CUBIC FEET PER HOUR	FIN FINISHED	MOCP MAXIMUM OVERCURRENT PROTECTION	TR TAMPER RESISTANT
CFM CUBIC FEET PER MINUTE	FLA FULL LOAD AMPS	MTD MOUNTED	TT TEMPERATURE TRANSMITTER
CHWR CHILLED WATER RETURN	FLR FLOOR	MUA MAKE-UP AIR UNIT	TIB TELECOMMUNICATIONS TERMINAL BACKBOARD
CHWS CHILLED WATER SUPPLY	FOB FLAT ON BOTTOM	N NEUTRAL	TYP TYPICAL
CI CAST IRON	FOT FLAT ON TOP	NC NORMALLY CLOSED	TX TRANSFORMER
CL CENTER LINE	FP FIRE PROTECTION	NEG NEGATIVE	UC UNDERCUT DOOR
CLG CEILING	FP FIRE PUMP	NIC NOT IN CONTRACT	UH UNIT HEATER
CMU CONCRETE MASONRY UNIT	FFM FEET PER MINUTE	NL NIGHT / SECURITY LIGHT - DO NOT SWITCH	UNO UNLESS NOTED OTHERWISE
CO CLEAN OUT	FPS FEET PER SECOND	NO NORMALLY OPEN	UNOC UNOCCUPIED
COL COLUMN	FS FLOW SWITCH	NOM NOMINAL	UR URINAL
COMP COMPRESSOR	FSD FIRE/SMOKE DAMPER	NTS NOT TO SCALE	V VOLTS
CONC CONCRETE	FT FEET	OA OUTSIDE AIR	VA VOLT AMPERE
COND CONDENSATE	FXC FLEXIBLE CONNECTION	OBD OPPOSED BLADE DAMPER	VA VALVE
CONN CONNECTION	GND GROUND	OC ON CENTER	VAV VARIABLE AIR VOLUME UNIT
CONT CONTRACTION	GA GAUGE	OCC OCCUPIED	VFD VARIABLE FREQUENCY DRIVE
CONTR CONTRACTOR	GAL GALLON	OCF OVER CURRENT PROTECTION	VRF VARIABLE REFRIGERANT FLOW
CRI COLOR RENDERING INDEX	GALV GALVANIZED	OD OUTSIDE DIAMETER	VOLT VOLTAGE
CT COOLING TOWER	GEC GROUND ELECTRODE CONDUCTOR	OL OVERLOAD	VTR VENT THROUGH ROOF
CU CONDENSING UNIT	GFCI / GFI GROUND FAULT CIRCUIT INTERRUPTER	ORF OVERFLOW ROOF DRAIN	W WIDTH
CJ COIL	GC GENERAL CONTRACTOR	OZ OUNCE	W/ WITH
CJH CABINET UNIT HEATER	GD GALLONS PER HOUR	PBD PARALLEL BLADE DAMPER	W/O WITHOUT
CVB CONSTANT VOLUME BOX	GPM GALLONS PER MINUTE	PD PRESSURE DROP	WB WET BULB
CWR CONDENSER WATER RETURN	GRSLB GRAINS PER POUND	PH PHASE	WC WATER COLUMN
CWS CONDENSER WATER SUPPLY	H 2O WATER	POS POSITIVE PRESSURE	WC WATER CLOSET
DB DRY BULB	HB HOSE BIBB	POS POINT OF SALES	WG WATER GAUGE
DEPT DEPARTMENT	HD HEAD (SEE SCHEDULES)	PRV PRESSURE REDUCING VALVE	WP WEATHERPROOF
DF DRINKING FOUNTAIN	HP HEAT PUMP	PSI PRESSURE SWITCH	WPUF WEATHERPROOF IN-USE
DA DIAMETER	HP HORSEPOWER	PS POUNDS PER SQUARE INCH	WST WITHSTAND RATING
DIAG DIAGRAM			XMR TRANSFORMER

SUBSTITUTIONS:

A. SUBSTITUTIONS: SUBSTITUTION OF SPECIFIED EQUIPMENT WILL BE ALLOWED THROUGH A PRIOR APPROVAL PROCESS INITIATED BY THE CONTRACTOR. CONTRACTOR SHALL SUBMIT INTENDED SUBSTITUTION AT LEAST FIVE DAYS PRIOR TO BID FOR APPROVAL FROM ENGINEER. SUBMITTAL SHALL INCLUDE CAPACITIES, DIMENSIONS AND OPERATING INSTRUCTIONS FOR EACH PIECE OF EQUIPMENT. SUBSTITUTION SHALL OCCUR AT NO COST TO THE OWNER. CONTRACTOR IS RESPONSIBLE FOR COORDINATION OF APPROVED SUBSTITUTION AND SHALL INCUR ALL COSTS ASSOCIATED WITH THE SUBSTITUTION INCLUDING STRUCTURAL, MODIFICATIONS, SPACE LAYOUT AND REDESIGN COSTS. SEE ALSO DIVISION 1 GENERAL REQUIREMENTS.

EXAMINATION OF SITE, DRAWINGS, SPECIFICATIONS:

A. EXAMINE CAREFULLY THE SITE AND CONDITIONS OF THE SITE. PROVIDE ALL NECESSARY EQUIPMENT AND LABOR TO INSTALL A COMPLETE WORKING SYSTEM WITHIN THE SITE CONDITIONS.

B. EXAMINE THE DRAWINGS AND SPECIFICATIONS AND 5 DAYS PRIOR TO BIDDING REPORT ANY ERRORS, OMISSIONS, INCONSISTENCIES, AND CONFLICTS TO THE ENGINEER TO BE REMEDIED IN AN ADDENDUM TO THE PROJECT PRIOR TO BID TIME.

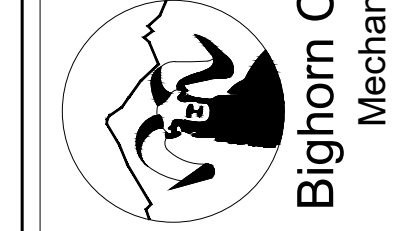
C. DRAWINGS ARE DIAGRAMMATIC AND CATALOG NUMBERS GIVEN ARE FOR REFERENCE ONLY. THE CONTRACTOR SHALL BE RESPONSIBLE FOR VERIFYING THE CAPACITY OF THE EQUIPMENT MEETS THE DRAWING REQUIREMENTS AND SHALL NOT DIMENSION FROM THE MECHANICAL, PLUMBING, OR PIPING DRAWINGS.

D. THE LATEST ADOPTED VERSIONS OF THE INTERNATIONAL BUILDING CODES SHALL BE USED AS REQUIRED. THIS WILL ALSO INCLUDE THE LATEST ADOPTED VERSIONS OF THE MECHANICAL, PLUMBING AND ENERGY CONSERVATION CODES. ALL METHODS AND MATERIALS REQUIRED BY THESE CODES SHALL BE REQUIRED BY THESE SPECIFICATIONS UNLESS INDICATED OTHERWISE. OTHER APPLICABLE LOCAL CODES AND ORDINANCES SHALL BE AS REQUIRED AND IT SHALL BE THE CONTRACTOR'S RESPONSIBILITY TO BE KNOWLEDGEABLE OF THESE REQUIREMENTS.

E. WHERE INSTALLATION PROCEDURES OR ANY PART THEREOF ARE REQUIRED TO BE IN ACCORDANCE WITH THE RECOMMENDATIONS OF THE MANUFACTURER OF THE MATERIAL BEING INSTALLED, PRINTED COPIES OF THESE RECOMMENDATIONS SHALL BE FURNISHED TO THE ENGINEER PRIOR TO INSTALLATION. INSTALLATION OF THE ITEM WILL NOT BE ALLOWED TO PROCEED UNTIL THE RECOMMENDATIONS ARE RECEIVED. FAILURE TO FOLLOW THESE RECOMMENDATIONS CAN BE CAUSE FOR REJECTION OF THE MATERIAL.

DO NOT REPRODUCE THESE DRAWINGS AND SPECIFICATIONS WITHOUT THE EXPRESSED WRITTEN PERMISSION OF THE ENGINEER. THE DRAWINGS AND SPECIFICATIONS ARE INSTRUMENTS OF THE SERVICE AND SHALL REMAIN THE PROPERTY OF THE ENGINEER. NO PART OF THESE DRAWINGS AND SPECIFICATIONS SHALL BE USED BY ANYONE IN ANY OTHER PROJECT WITHOUT THE WRITTEN PERMISSION OF THE ENGINEER.

386 Indian Road
Grand Junction, CO 81501
Phone: (970) 241-8709



1805 WALTON CREEK ROAD
STEAMBOAT SPRINGS, COLORADO

REVIEWED
FOR
CODE
COMPLIANCE
12/07/2022

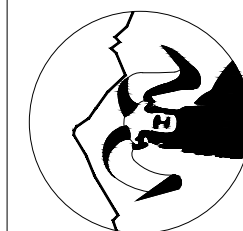
DATE:	ISSUED FOR:
06/17/2022	PERMIT
09/07/2022	PERMIT CORRECTIONS



DATE:	06/17/2022
JOB NO:	21-276
DRAWN BY:	BCE
CHECKED BY:	BCE
SCALE:	AS SHOWN
SHEET NUMBER:	E0-1

DO NOT REPRODUCE THESE DRAWINGS AND SPECIFICATIONS WITHOUT THE EXPRESSED WRITTEN PERMISSION OF THE DESIGNER. THE DRAWINGS AND SPECIFICATIONS ARE INSTRUMENTS OF THE SERVICE AND SHALL REMAIN THE PROPERTY OF THE DESIGNER. WHETHER THE PROJECT FOR WHICH THEY ARE MADE IS EXECUTED OR NOT. THESE DRAWINGS AND SPECIFICATIONS SHALL NOT BE USED BY ANYONE ON ANY OTHER PROJECT OR IN ADDITION TO THIS PROJECT BY OTHERS EXCEPT BY THE EXPRESSED WRITTEN PERMISSION OF THE DESIGNER.

386 Indian Road
Grand Junction, CO 81501
Phone: (970) 241-8709



Bighorn Consulting Engineers, Inc.
Mechanical & Electrical Engineers

1805 WALTON CREEK ROAD

STEAMBOAT SPRINGS, COLORADO

REVIEWED
FOR
CODE
COMPLIANCE
12/07/2022

DATE: 06/17/2022
ISSUED FOR: PERMIT
09/07/2022 PERMIT CORRECTIONS

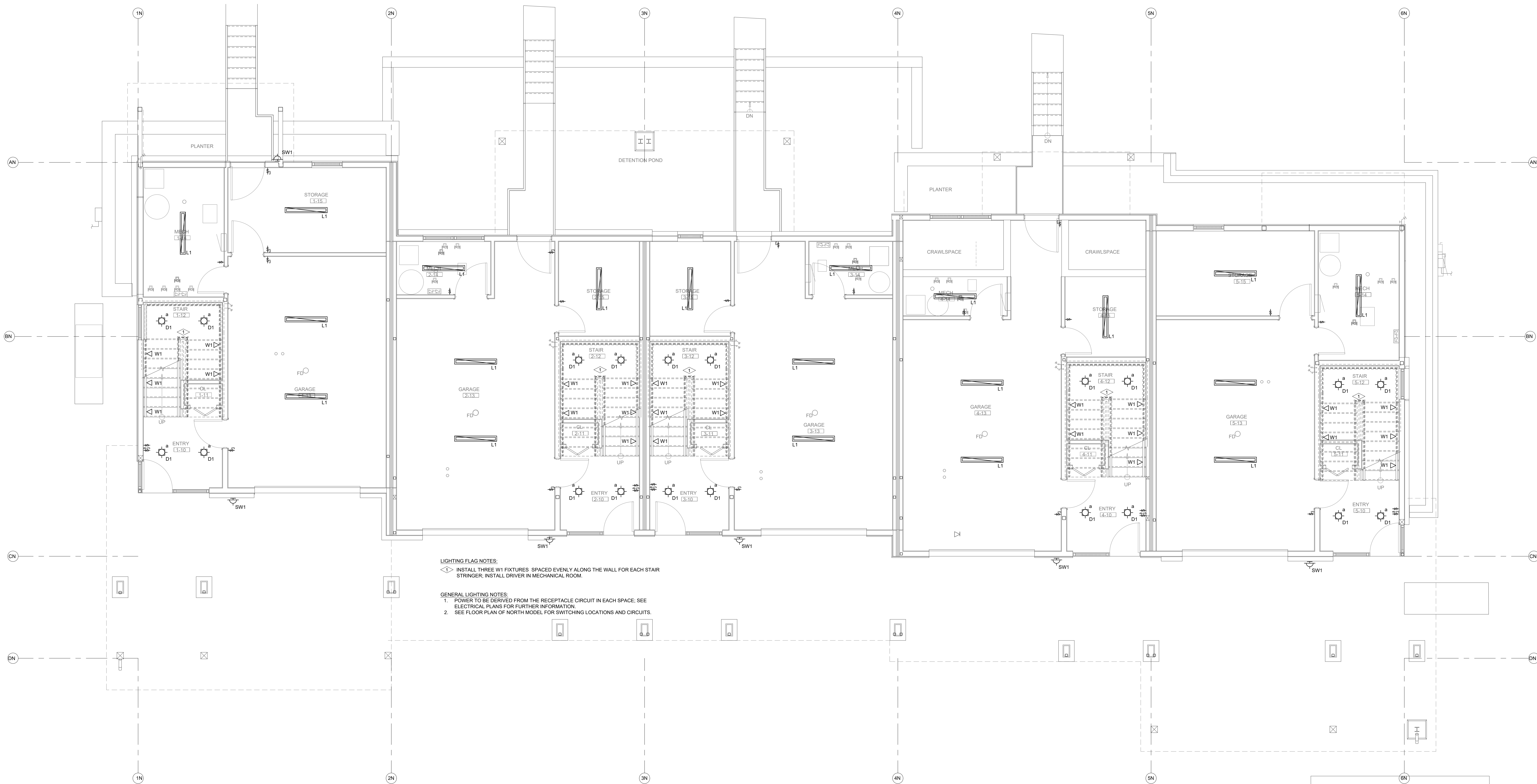


DATE: 06/17/2022
JOB NO: 21-276
DRAWN BY: BGE
CHECKED BY: BGE
SCALE: AS SHOWN
SHEET NUMBER:
E1-1

September 08, 2022 - 9:40:27am

LUMINAIRE SCHEDULE					
TYPE	MANUFACTURER CATALOG NO.	MANUFACTURER CATALOG NO.	VOLTAGE MOUNTING	BALLAST/DRIVER LAMP SPECIFICATION	DESCRIPTION
CF1	STUDIO M SM89909FTSNBK	APPROVED EQUIVALENT	120V SURFACE CEILING	E26 LED BULB 800LM, 3000K 80CRI, 9W/9W	COMBINATION CEILING FAN/LIGHT FROSTED LENS, MATCH WALL SWITCH WITH BULB DIMMING CONTROL TYPE, FIVE YEAR WARRANTY
D1	HALO H999ICATCP LT460WH8930	APPROVED EQUIVALENT	120V RECESSED CEILING	LED DIMMING DRIVER 600LM, 3000K 80CRI, 9W	4" DIA RECESSED DOWNLIGHT FROSTED LENS, CLOSET LISTED, DAMP LISTED COLD WEATHER RATED, FIVE YEAR WARRANTY
L1	METALUX 45LSTP4040DD-UNV	APPROVED EQUIVALENT	120V SURFACE CEILING	LED DRIVER 4000LM, 3500K 80CRI, 40W	48" LINEAR STRIP LIGHT FROSTED LENS, COLD WEATHER RATED FIVE YEAR WARRANTY
P1	TECH LIGHTING 700-MP-K-S-12	APPROVED EQUIVALENT	120V PENDANT	E26 LED BULB 600LM, 3000K 80CRI, 12W	MINI PENDANT CONFIRM SELECTION WITH ARCHITECT
P2	TECH LIGHTING 700-TD-QNTP-K	APPROVED EQUIVALENT	120V PENDANT	E26 LED BULB 1200LM, 3000K 80CRI, 19W	PENDANT FIXTURE CONFIRM SELECTION WITH ARCHITECT
V1	SHAPER 605-25-L3/830-UNV-XX	APPROVED EQUIVALENT	120V WALL SURFACE	LED DRIVER 2000LM, 3000K 80CRI, 20W	24" LINEAR LENSED VANITY FIXTURE DAMP LISTED, FROSTED LENS, FIVE YEAR WARRANTY
W1	ASTRO LIGHTING 7418	APPROVED EQUIVALENT	120V STEP LIGHTING	LED DRIVER 35LM, 2700K 80CRI, 6W	WALL RECESSED STEP LIGHT DOWNWARD DIRECTED, PROVIDE WITH LED DRIVER
SW1	TECH LIGHTING 700WTAG-830-6-D-Z-UNV-S	APPROVED EQUIVALENT	120V WALL SURFACE	600LM, 3000K 80CRI, 10W	EXTERIOR FULL CUTOFF WALL SCONCE COLD WEATHER RATED, WET LISTED FIVE YEAR WARRANTY

NOTES:
1. FIXTURES ARE REPRESENTATIVE OF A BASIS OF DESIGN FOR PRICING PURPOSES. VERIFY FINAL SELECTION WITH ARCHITECT AND OWNER.
2. CONTROLS FOR EACH RESIDENCE TO BE A WHOLE HOME SYSTEM, LUTRON HOMEWORX OR EQUIVALENT TO ALLOW SCENE PROGRAMMING AND INTEGRATE SHADE CONTROL.



LIGHTING FLAG NOTES:
◁ INSTALL THREE W1 FIXTURES SPACED EVENLY ALONG THE WALL FOR EACH STAIR STRINGER; INSTALL DRIVER IN MECHANICAL ROOM.

GENERAL LIGHTING NOTES:
1. POWER TO BE DERIVED FROM THE RECEPTACLE CIRCUIT IN EACH SPACE; SEE ELECTRICAL PLANS FOR FURTHER INFORMATION.
2. SEE FLOOR PLAN OF NORTH MODEL FOR SWITCHING LOCATIONS AND CIRCUITS.

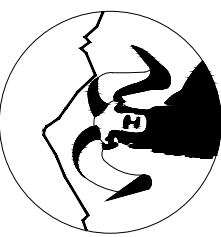


LIGHTING - NORTH BUILDING - LEVEL 1 FLOOR PLAN

SCALE: 1/4"=1'-0"

DO NOT REPRODUCE THESE DRAWINGS AND SPECIFICATIONS WITHOUT THE EXPRESSED WRITTEN PERMISSION OF THE DESIGNER. THE DRAWINGS AND SPECIFICATIONS ARE INSTRUMENTS OF THE SERVICE AND SHALL REMAIN THE PROPERTY OF THE DESIGNER. UNLESS THE PROJECT FOR WHICH THEY ARE MADE IS EXECUTED OR NOT. THESE DRAWINGS AND SPECIFICATIONS SHALL NOT BE USED BY ANYONE ON ANY OTHER PROJECT OR IN ANY MANNER WITHOUT THE WRITTEN PERMISSION OF THE DESIGNER.

386 Indian Road
Grand Junction, CO 81501
Phone: (970) 241-8709



Bighorn Consulting Engineers, Inc.
Mechanical & Electrical Engineers

1805 WALTON CREEK ROAD

STEAMBOAT SPRINGS, COLORADO

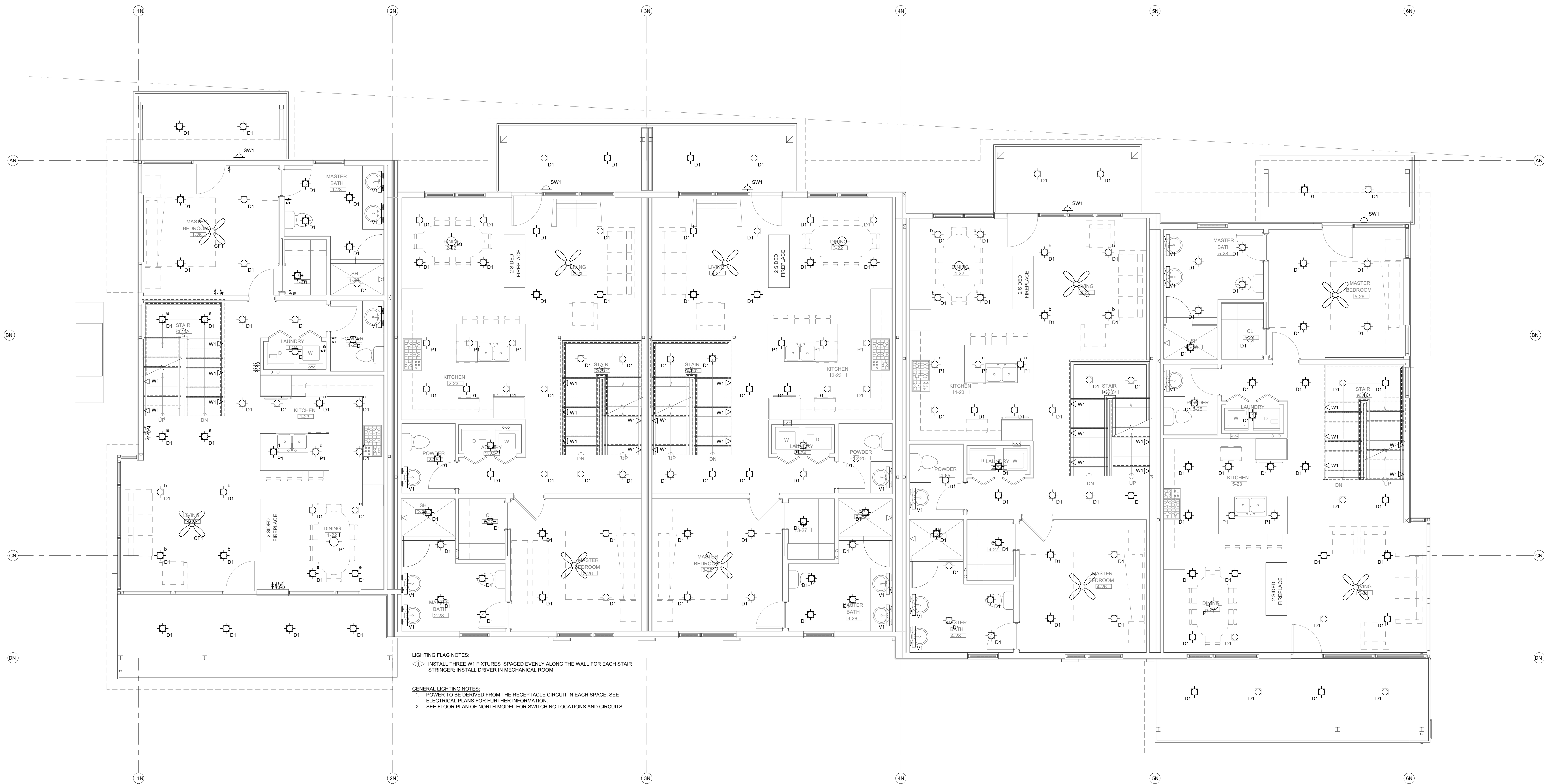
REVIEWED
FOR
CODE
COMPLIANCE
12/07/2022

DATE:	ISSUED FOR:
06/17/2022	PERMIT
09/07/2022	PERMIT CORRECTIONS



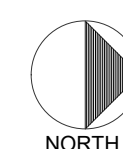
DATE:	06/17/2022
JOB NO:	21-276
DRAWN BY:	BCE
CHECKED BY:	BCE
SCALE:	AS SHOWN
SHEET NUMBER:	E1-2

September 08, 2022 - 9:40:28am



LIGHTING FLAG NOTES:
◁ INSTALL THREE W1 FIXTURES SPACED EVENLY ALONG THE WALL FOR EACH STAIR STRINGER; INSTALL DRIVER IN MECHANICAL ROOM.

GENERAL LIGHTING NOTES:
1. POWER TO BE DERIVED FROM THE RECEPTACLE CIRCUIT IN EACH SPACE. SEE ELECTRICAL PLANS FOR FURTHER INFORMATION.
2. SEE FLOOR PLAN OF NORTH MODEL FOR SWITCHING LOCATIONS AND CIRCUITS.



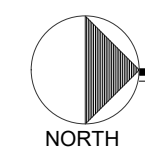
LIGHTING - NORTH BUILDING - LEVEL 2 FLOOR PLAN

SCALE: 1/4"=1'-0"



LIGHTING FLAG NOTES:
◁▷ INSTALL THREE W1 FIXTURES SPACED EVENLY ALONG THE WALL FOR EACH STAIR STRINGER, INSTALL DRIVER IN MECHANICAL ROOM.

GENERAL LIGHTING NOTES:
1. POWER TO BE DERIVED FROM THE RECEPTACLE CIRCUIT IN EACH SPACE, SEE ELECTRICAL PLANS FOR FURTHER INFORMATION.
2. SEE FLOOR PLAN OF NORTH MODEL FOR SWITCHING LOCATIONS AND CIRCUITS.

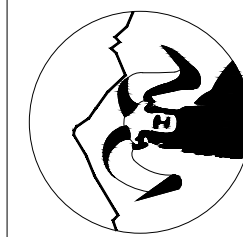


LIGHTING - NORTH BUILDING - LEVEL 3 FLOOR PLAN

SCALE: 1/4"=1'-0"

DO NOT REPRODUCE THESE DRAWINGS AND SPECIFICATIONS WITHOUT THE EXPRESSED WRITTEN PERMISSION OF THE DESIGNER. THE DRAWINGS AND SPECIFICATIONS ARE INSTRUMENTS OF THE SERVICE AND SHALL REMAIN THE PROPERTY OF THE DESIGNER. WHETHER THE PROJECT FOR WHICH THEY ARE MADE IS EXECUTED OR NOT. THESE DRAWINGS AND SPECIFICATIONS SHALL NOT BE USED BY ANYONE ON ANY OTHER PROJECT OR IN ADDITION TO THIS PROJECT BY OTHERS EXCEPT BY THE EXPRESSED WRITTEN PERMISSION OF THE DESIGNER.

386 Indian Road
Grand Junction, CO 81501
Phone: (970) 241-8709



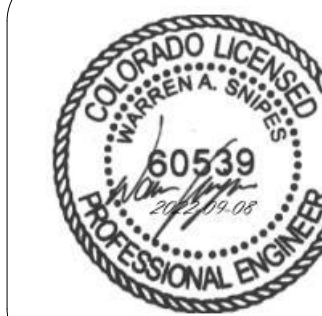
Bighorn Consulting Engineers, Inc.
Mechanical & Electrical Engineers

1805 WALTON CREEK ROAD

STEAMBOAT SPRINGS, COLORADO

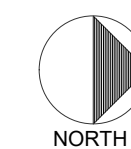
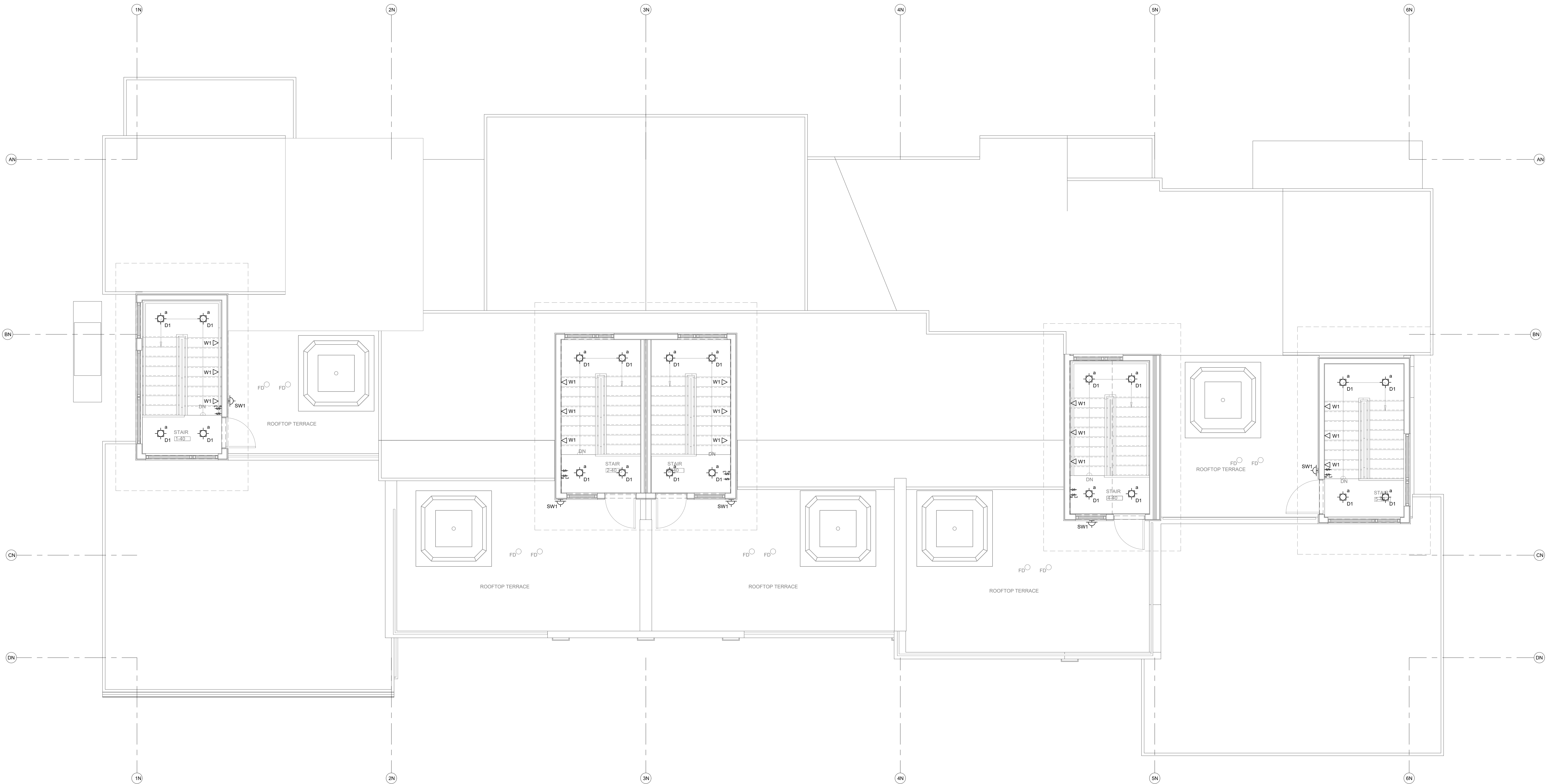
REVIEWED
FOR
CODE
COMPLIANCE
12/07/2022

DATE	ISSUED FOR:
06/17/2022	PERMIT
09/07/2022	PERMIT CORRECTIONS



DATE	06/17/2022
JOB NO.	21-276
DRAWN BY:	BCE
CHECKED BY:	BCE
SCALE:	AS SHOWN
SHEET NUMBER:	E1-3

September 08, 2022 - 9:40:28am

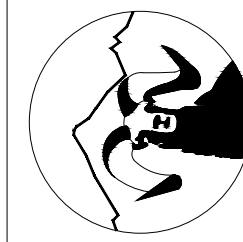


LIGHTING - NORTH BUILDING - LEVEL 4 FLOOR PLAN

SCALE: 1/4"=1'-0"

DO NOT REPRODUCE THESE DRAWINGS AND SPECIFICATIONS WITHOUT THE EXPRESSED WRITTEN PERMISSION OF THE DESIGNER. THE DRAWINGS AND SPECIFICATIONS ARE INSTRUMENTS OF THE SERVICE AND SHALL REMAIN THE PROPERTY OF THE DESIGNER. WHETHER THE PROJECT FOR WHICH THEY ARE MADE IS EXECUTED OR NOT. THESE DRAWINGS AND SPECIFICATIONS SHALL NOT BE USED BY ANYONE ON ANY OTHER PROJECT OR IN ADDITION TO THIS PROJECT BY OTHERS EXCEPT BY THE EXPRESSED WRITTEN PERMISSION OF THE DESIGNER.

386 Indian Road
Grand Junction, CO 81501
Phone: (970) 241-8709



Bighorn Consulting Engineers, Inc.
Mechanical & Electrical Engineers

1805 WALTON CREEK ROAD

STEAMBOAT SPRINGS, COLORADO

REVIEWED
FOR
CODE
COMPLIANCE
12/07/2022

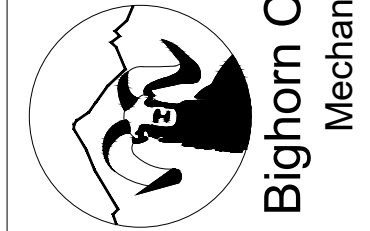
DATE:	ISSUED FOR:
06/17/2022	PERMIT
09/07/2022	PERMIT CORRECTIONS



DATE:	06/17/2022
JOB NO:	21-276
DRAWN BY:	BCE
CHECKED BY:	BCE
SCALE:	AS SHOWN
SHEET NUMBER:	E1-4

DO NOT REPRODUCE THESE DRAWINGS AND SPECIFICATIONS WITHOUT THE EXPRESSED WRITTEN PERMISSION OF THE DESIGNER. THE DRAWINGS AND SPECIFICATIONS ARE INSTRUMENTS OF THE SERVICE AND SHALL REMAIN THE PROPERTY OF THE DESIGNER. WHETHER THE PROJECT FOR WHICH THEY ARE MADE IS EXECUTED OR NOT. THESE DRAWINGS AND SPECIFICATIONS SHALL NOT BE USED BY ANYONE ON ANY OTHER PROJECT FOR ANY PURPOSE WITHOUT THE WRITTEN PERMISSION OF THE DESIGNER.

386 Indian Road
Grand Junction, CO 81501
Phone: (970) 241-8709



1805 WALTON CREEK ROAD
STEAMBOAT SPRINGS, COLORADO

REVIEWED
FOR
CODE
COMPLIANCE
12/07/2022

DATE: 06/17/2022
ISSUED FOR: PERMIT
09/07/2022 PERMIT CORRECTIONS



DATE: 06/17/2022
JOB NO: 21-276
DRAWN BY: BCE
CHECKED BY: BCE
SCALE: AS SHOWN
SHEET NUMBER:
E1-5

September 08, 2022 - 9:40:30am

LUMINAIRE SCHEDULE					
TYPE	MANUFACTURER CATALOG NO.	MANUFACTURER EQUIVALENT	VOLTAGE MOUNTING	BALLAST/DRIVER LAMP SPECIFICATION	DESCRIPTION
CF1	STUDIO M SM869909FTSNBK	APPROVED EQUIVALENT	120V SURFACE CEILING	E26 LED BULB 800LM, 3000K 80CRI, 9W/9W	COMBINATION CEILING FAN/LIGHT FROSTED LENS, MATCH WALL SWITCH WITH BULB DIMMING CONTROL TYPE, FIVE YEAR WARRANTY
D1	HALO H999CATCP LT460WH8930	APPROVED EQUIVALENT	120V RECESSED CEILING	LED DIMMING DRIVER 600LM, 3000K 80CRI, 9W	4" DIA RECESSED DOWNLIGHT FROSTED LENS, CLOSET LISTED, DAMP LISTED COLD WEATHER RATED, FIVE YEAR WARRANTY
L1	METALUX 45LSTP4040D0-UNV	APPROVED EQUIVALENT	120V SURFACE CEILING	LED DRIVER 4000LM, 3500K 80CRI, 40W	48" LINEAR STRIP LIGHT FROSTED LENS, COLD WEATHER RATED FIVE YEAR WARRANTY
P1	TECH LIGHTING 700-MP-K-S-12	APPROVED EQUIVALENT	120V PENDANT	E26 LED BULB 600LM, 3000K 80CRI, 12W	MINI PENDANT CONFIRM SELECTION WITH ARCHITECT
P2	TECH LIGHTING 700-TD-QNTP-K	APPROVED EQUIVALENT	120V PENDANT	E26 LED BULB 1200LM, 3000K 80CRI, 19W	PENDANT FIXTURE CONFIRM SELECTION WITH ARCHITECT
V1	SHAPER 605-25-L3830-UNV-XX	APPROVED EQUIVALENT	120V WALL SURFACE	LED DRIVER 2000LM, 3000K 80CRI, 20W	24" LINEAR LENSED VANITY FIXTURE DAMP LISTED, FROSTED LENS, FIVE YEAR WARRANTY
W1	ASTRO LIGHTING 7418	APPROVED EQUIVALENT	120V STEP LIGHTING	LED DRIVER 35LM, 2700K 80CRI, 6W	WALL RECESSED STEP LIGHT DOWNWARD DIRECTED, PROVIDE WITH LED DRIVER
SW1	TECH LIGHTING 700OWTAG-830-6-D-Z-UNV-S	APPROVED EQUIVALENT	120V WALL SURFACE	LED DRIVER 600LM, 3000K 80CRI, 10W	EXTERIOR FULL CUTOFF WALL SCONCE COLD WEATHER RATED, WET LISTED FIVE YEAR WARRANTY

- NOTES:
1. FIXTURES ARE REPRESENTATIVE OF A BASIS OF DESIGN FOR PRICING PURPOSES. VERIFY FINAL SELECTION WITH ARCHITECT AND OWNER.
2. CONTROLS FOR EACH RESIDENCE TO BE A WHOLE HOME SYSTEM, LUTRON HOMETWORKS OR EQUIVALENT TO ALLOW SCENE PROGRAMMING AND INTEGRATE SHADE CONTROL.



GENERAL LIGHTING NOTES:
1. POWER TO BE DERIVED FROM THE RECEPTACLE CIRCUIT IN EACH SPACE; SEE ELECTRICAL PLANS FOR FURTHER INFORMATION.

LIGHTING FLAG NOTES:
◇ INSTALL THREE W1 FIXTURES SPACED EVENLY ALONG THE WALL FOR EACH STAIR STRINGER; INSTALL DRIVER IN MECHANICAL ROOM.

LIGHTING - SOUTH BUILDING - LEVEL 1 FLOOR PLAN
SCALE: 1/4"=1'-0"

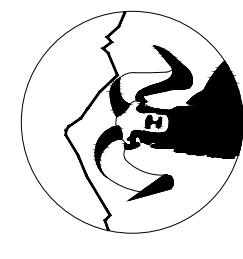


GENERAL LIGHTING NOTES:
1. POWER TO BE DERIVED FROM THE RECEPTACLE CIRCUIT IN EACH SPACE; SEE ELECTRICAL PLANS FOR FURTHER INFORMATION.

LIGHTING FLAG NOTES:
◇ INSTALL THREE W1 FIXTURES SPACED EVENLY ALONG THE WALL FOR EACH STAIR STRINGER; INSTALL DRIVER IN MECHANICAL ROOM.

 **LIGHTING - SOUTH BUILDING - LEVEL 2 FLOOR PLAN**
SCALE: 1/4"=1'-0"

DO NOT REPRODUCE THESE DRAWINGS AND SPECIFICATIONS WITHOUT THE EXPRESSED WRITTEN PERMISSION OF THE DESIGNER. THE DRAWINGS AND SPECIFICATIONS ARE INSTRUMENTS OF THE SERVICE AND SHALL REMAIN THE PROPERTY OF THE DESIGNER. UNLESS THE PROJECT FOR WHICH THEY ARE MADE IS EXECUTED OR NOT. THESE DRAWINGS AND SPECIFICATIONS SHALL NOT BE USED BY ANYONE ON ANY OTHER PROJECT OR IN ADDITION TO THIS PROJECT BY OTHERS EXCEPT BY THE EXPRESSED WRITTEN PERMISSION OF THE DESIGNER.



Bighorn Consulting Engineers, Inc.
Mechanical & Electrical Engineers

386 Indian Road
Grand Junction, CO 81501
Phone: (970) 241-8709

1805 WALTON CREEK ROAD
STEAMBOAT SPRINGS, COLORADO

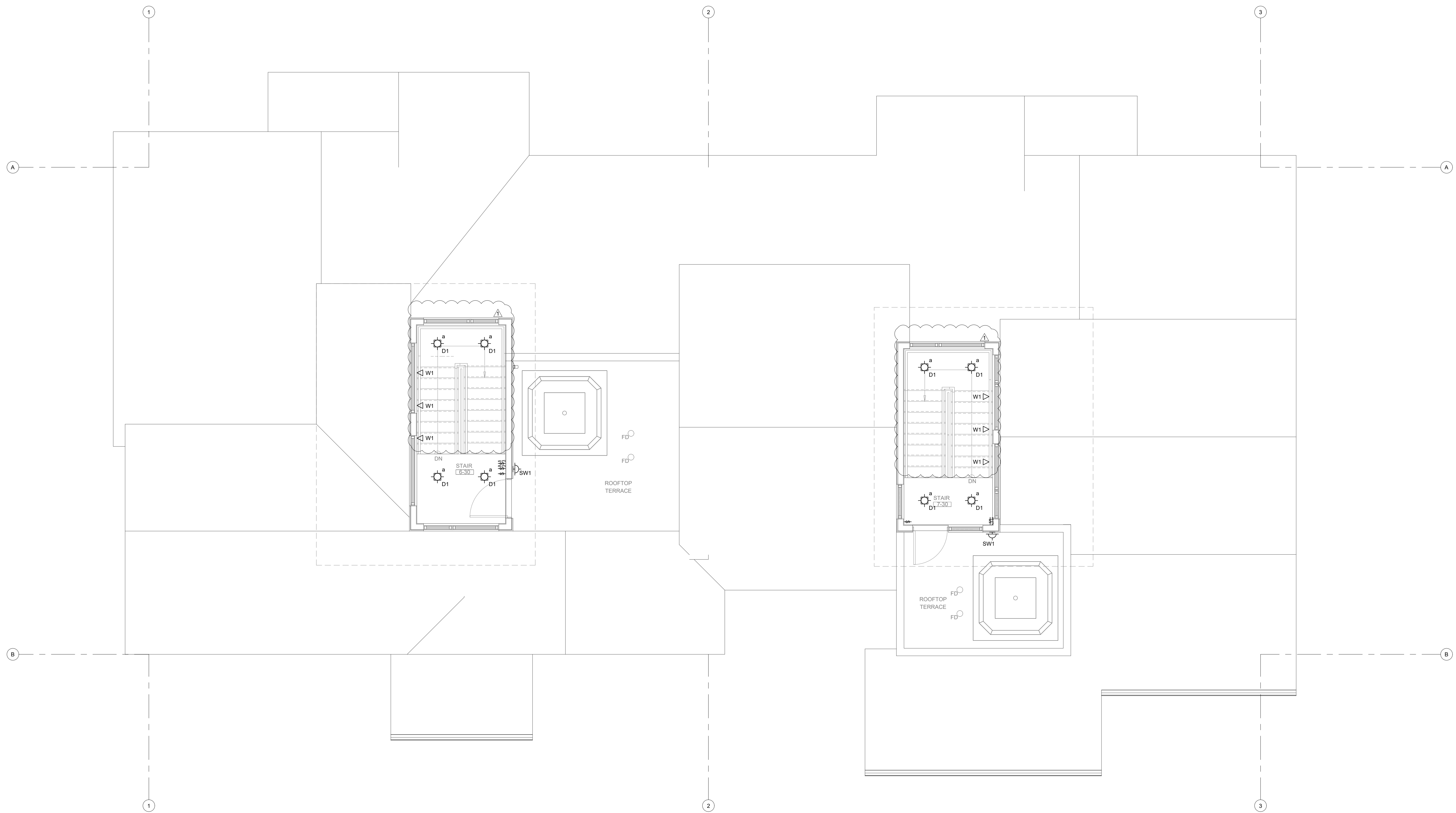
**REVIEWED
FOR
CODE
COMPLIANCE**
12/07/2022

DATE	ISSUED FOR:
06/17/2022	PERMIT
09/07/2022	PERMIT CORRECTIONS



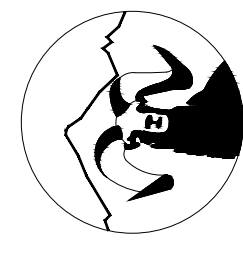
DATE	06/17/2022
JOB NO.	21-276
DRAWN BY:	BCE
CHECKED BY:	BCE
SCALE:	AS SHOWN
SHEET NUMBER:	E1-6

September 08, 2022 - 9:40:31am



LIGHTING - SOUTH BUILDING - LEVEL 3 FLOOR PLAN
SCALE: 1/4"=1'-0"

DO NOT REPRODUCE THESE DRAWINGS AND SPECIFICATIONS WITHOUT THE EXPRESSED WRITTEN PERMISSION OF THE DESIGNER. THE DRAWINGS AND SPECIFICATIONS ARE INSTRUMENTS OF THE SERVICE AND SHALL REMAIN THE PROPERTY OF THE DESIGNER. WHETHER THE PROJECT FOR WHICH THEY ARE MADE IS EXECUTED OR NOT. THESE DRAWINGS AND SPECIFICATIONS SHALL NOT BE USED BY ANYONE ON ANY OTHER PROJECT OR IN ADDITION TO THIS PROJECT BY OTHERS EXCEPT BY THE EXPRESSED WRITTEN PERMISSION OF THE DESIGNER.



Bighorn Consulting Engineers, Inc.
Mechanical & Electrical Engineers

386 Indian Road
Grand Junction, CO 81501
Phone: (970) 241-8709

1805 WALTON CREEK ROAD
STEAMBOAT SPRINGS, COLORADO

**REVIEWED
FOR
CODE
COMPLIANCE**
12/07/2022

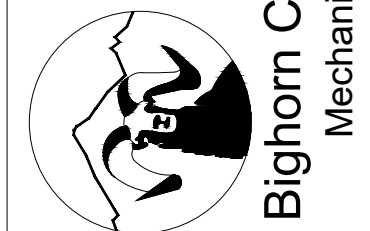
DATE	ISSUED FOR:
06/17/2022	PERMIT
09/07/2022	PERMIT CORRECTIONS



DATE	06/17/2022
JOB NO.	21-276
DRAWN BY:	BCE
CHECKED BY:	BCE
SCALE:	AS SHOWN
SHEET NUMBER:	E1-7

DO NOT REPRODUCE THESE DRAWINGS AND SPECIFICATIONS WITHOUT THE EXPRESSED WRITTEN PERMISSION OF THE DESIGNER. THE DRAWINGS AND SPECIFICATIONS ARE INSTRUMENTS OF THE SERVICE AND SHALL REMAIN THE PROPERTY OF THE DESIGNER. WHETHER THE PROJECT FOR WHICH THEY ARE MADE IS EXECUTED OR NOT. THESE DRAWINGS AND SPECIFICATIONS SHALL NOT BE USED BY ANYONE ON ANY OTHER PROJECT OR IN ADDITION TO THIS PROJECT BY OTHERS EXCEPT BY THE EXPRESSED WRITTEN PERMISSION OF THE DESIGNER.

386 Indian Road
Grand Junction, CO 81501
Phone: (970) 241-8709



1805 WALTON CREEK ROAD
STEAMBOAT SPRINGS, COLORADO

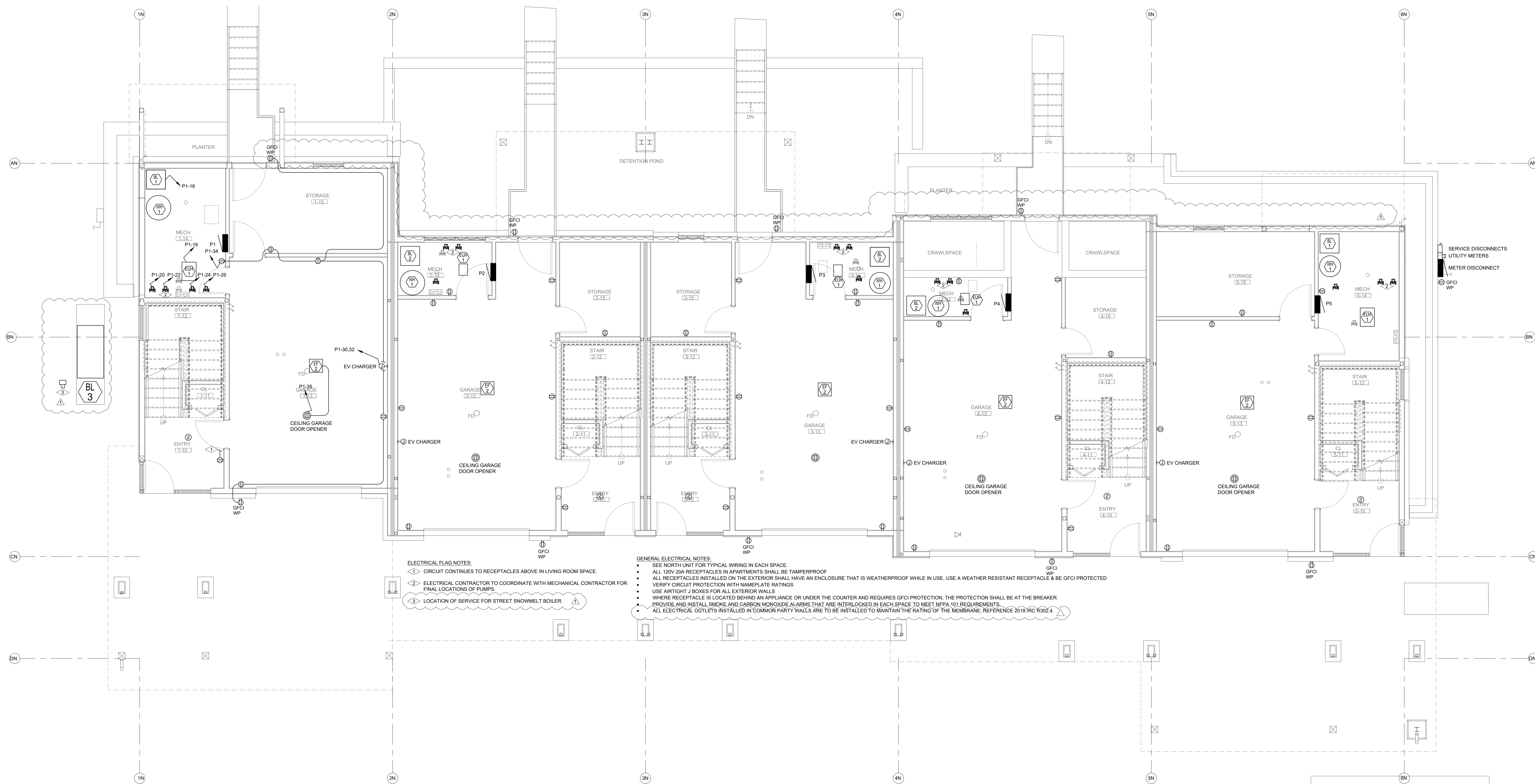
REVIEWED
FOR
CODE
COMPLIANCE
12/07/2022

DATE: 06/17/2022
ISSUED FOR: PERMIT
09/07/2022 PERMIT CORRECTIONS



DATE: 06/17/2022
JOB NO: 21-276
DRAWN BY: BCE
CHECKED BY: BCE
SCALE: AS SHOWN
SHEET NUMBER:
E2-1

September 08, 2022 - 9:40:36am



ELECTRICAL FLAG NOTES:
1. CIRCUIT CONTINUES TO RECEPTACLES ABOVE IN LIVING ROOM SPACE.
2. ELECTRICAL CONTRACTOR TO COORDINATE WITH MECHANICAL CONTRACTOR FOR FINAL LOCATIONS OF PUMPS.
3. LOCATION OF SERVICE FOR STREET SNOWMELT BOILER.

GENERAL ELECTRICAL NOTES:
1. SEE NORTH UNIT FOR TYPICAL WIRING IN EACH SPACE.
2. ALL 120V/20A RECEPTACLES IN APARTMENTS SHALL BE TAMPERPROOF.
3. ALL RECEPTACLES INSTALLED ON THE EXTERIOR SHALL HAVE AN ENCLOSURE THAT IS WEATHERPROOF WHILE IN USE. USE A WEATHER RESISTANT RECEPTACLE & BE GFCI PROTECTED.
4. VERIFY CIRCUIT PROTECTION WITH NAMEPLATE RATINGS.
5. USE AIRTIGHT J BOXES FOR ALL EXTERIOR WALLS.
6. WHERE RECEPTACLE IS LOCATED BEHIND AN APPLIANCE OR UNDER THE COUNTER AND REQUIRES GFCI PROTECTION, THE PROTECTION SHALL BE AT THE BREAKER.
7. PROVIDE AND INSTALL SMOKE AND CARBON MONOXIDE ALARMS THAT ARE INTERLOCKED IN EACH SPACE TO MEET NFPA 101 REQUIREMENTS.
8. ALL ELECTRICAL OUTLETS INSTALLED IN COMMON PARTY WALLS ARE TO BE INSTALLED TO MAINTAIN THE RATING OF THE MEMBRANE, REFERENCE 2018 IRC R302.4.

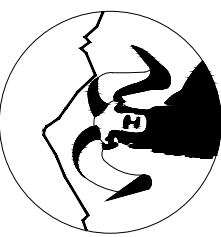


ELECTRICAL - NORTH BUILDING - LEVEL 1 FLOOR PLAN

SCALE: 1/4"=1'-0"

DO NOT REPRODUCE THESE DRAWINGS AND SPECIFICATIONS WITHOUT THE EXPRESSED WRITTEN PERMISSION OF THE DESIGNER. THE DRAWING AND SPECIFICATIONS ARE INSTRUMENTS OF THE SERVICE AND SHALL REMAIN THE PROPERTY OF THE DESIGNER. UNLESS THE PROJECT FOR WHICH THEY ARE MADE IS EXECUTED OR NOT. THESE DRAWINGS AND SPECIFICATIONS SHALL NOT BE USED BY ANYONE ON ANY OTHER PROJECT OR IN ADDITION TO THE PROJECT BY OTHERS EXCEPT BY THE EXPRESSED WRITTEN PERMISSION OF THE DESIGNER.

386 Indian Road
Grand Junction, CO 81501
Phone: (970) 241-8709



Bighorn Consulting Engineers, Inc.
Mechanical & Electrical Engineers

1805 WALTON CREEK ROAD

STEAMBOAT SPRINGS, COLORADO

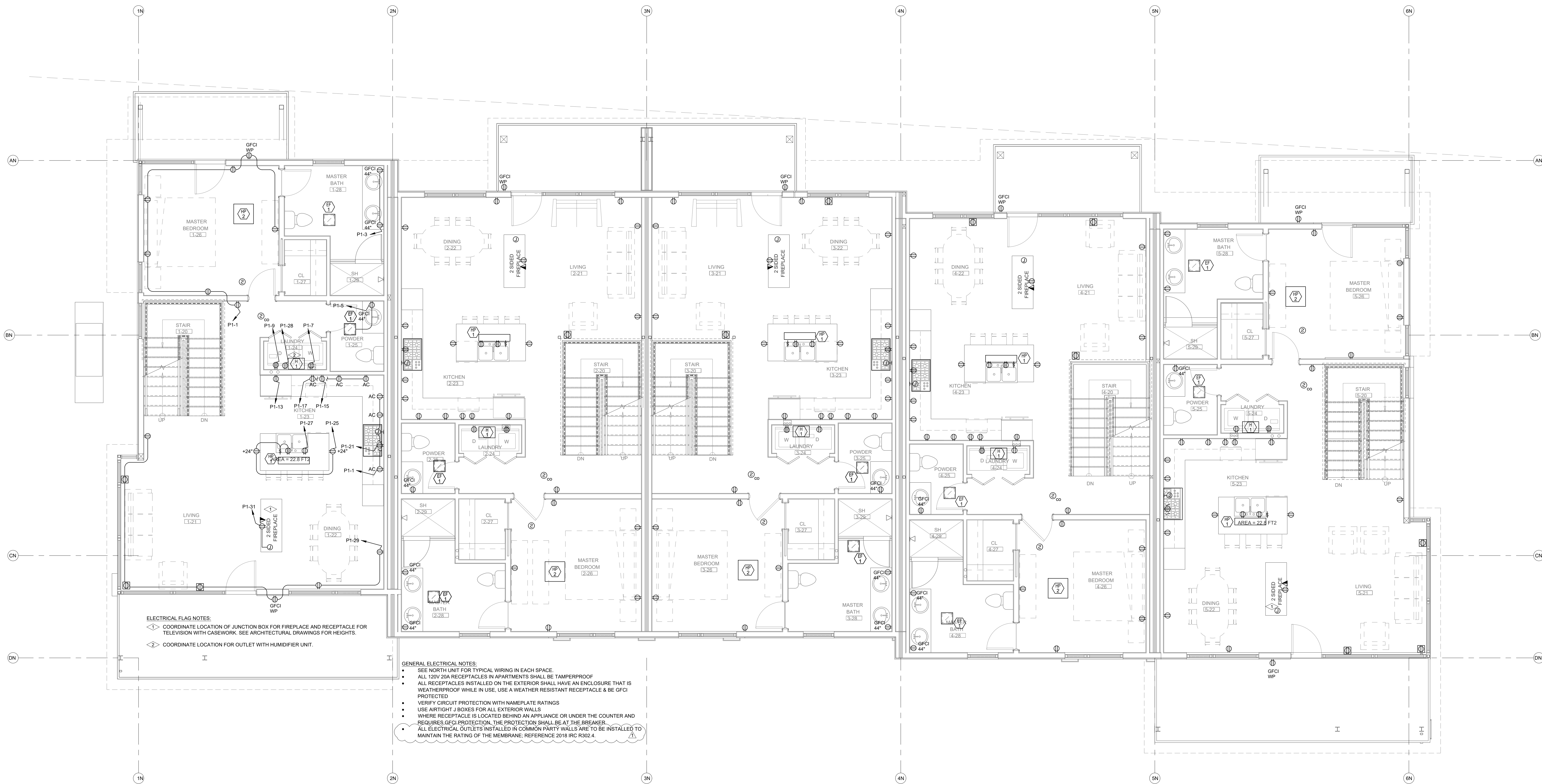
REVIEWED
FOR
CODE
COMPLIANCE
12/07/2022

DATE: 06/17/2022
ISSUED FOR: PERMIT
09/07/2022 PERMIT CORRECTIONS



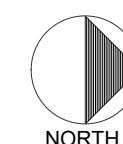
DATE: 06/17/2022
JOB NO: 21-276
DRAWN BY: BCE
CHECKED BY: BCE
SCALE: AS SHOWN
SHEET NUMBER: E2-2

September 08, 2022 - 9:40:38am



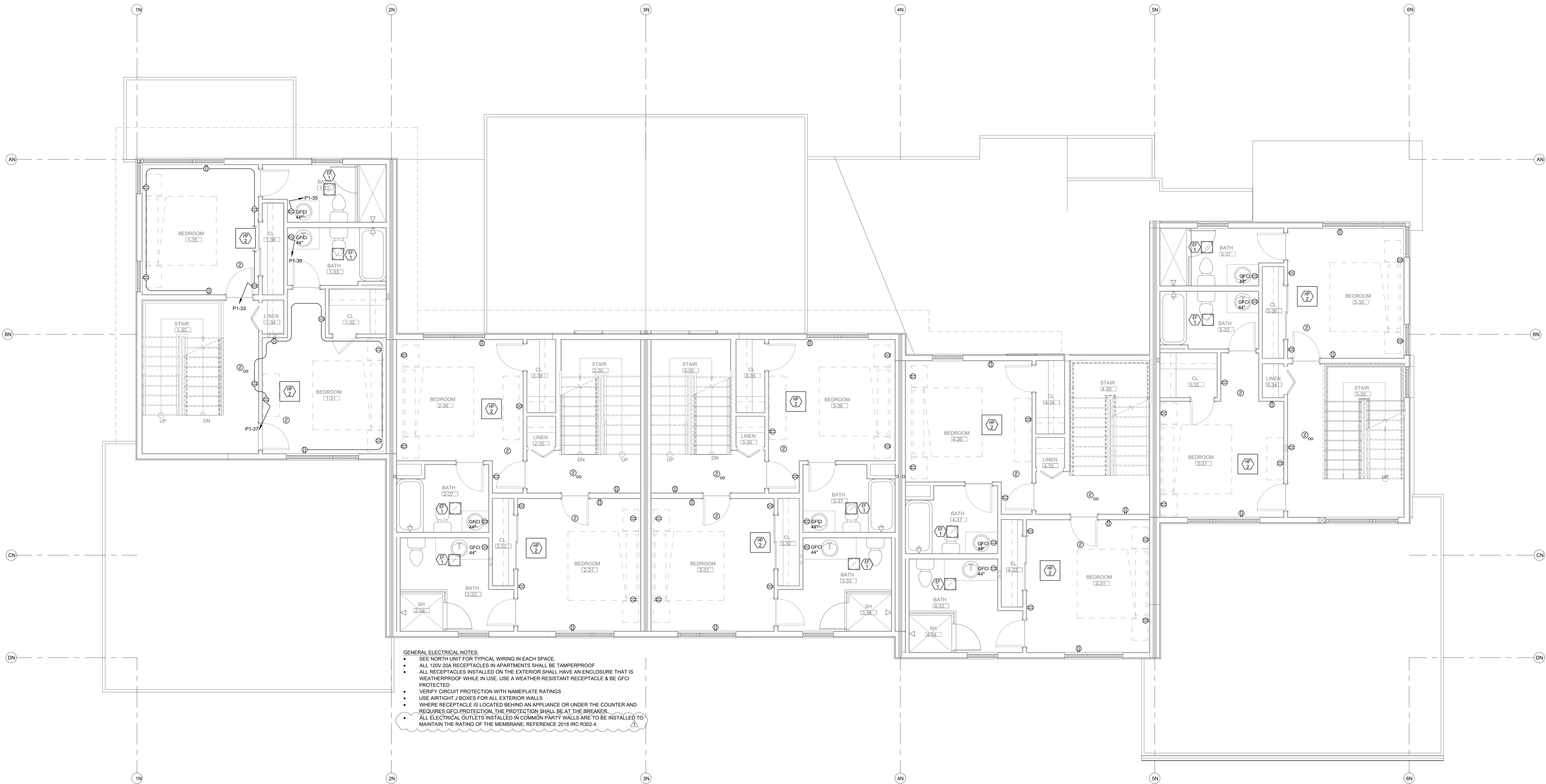
ELECTRICAL FLAG NOTES:
◇ COORDINATE LOCATION OF JUNCTION BOX FOR FIREPLACE AND RECEPTACLE FOR TELEVISION WITH CASEWORK. SEE ARCHITECTURAL DRAWINGS FOR HEIGHTS.
◇ COORDINATE LOCATION FOR OUTLET WITH HUMIDIFIER UNIT.

GENERAL ELECTRICAL NOTES:
• SEE NORTH UNIT FOR TYPICAL WIRING IN EACH SPACE.
• ALL 120V 20A RECEPTACLES IN APARTMENTS SHALL BE TAMPERPROOF.
• ALL RECEPTACLES INSTALLED ON THE EXTERIOR SHALL HAVE AN ENCLOSURE THAT IS WEATHERPROOF WHILE IN USE. USE A WEATHER RESISTANT RECEPTACLE & BE GFCI PROTECTED.
• VERIFY CIRCUIT PROTECTION WITH NAMEPLATE RATINGS.
• USE AIRTIGHT J BOXES FOR ALL EXTERIOR WALLS.
• WHERE RECEPTACLE IS LOCATED BEHIND AN APPLIANCE OR UNDER THE COUNTER AND REQUIRES GFCI PROTECTION, THE PROTECTION SHALL BE AT THE BREAKER.
• ALL ELECTRICAL OUTLETS INSTALLED IN COMMON PARTY WALLS ARE TO BE INSTALLED TO MAINTAIN THE RATING OF THE MEMBRANE; REFERENCE 2018 IRC R302.4.



ELECTRICAL - NORTH BUILDING - LEVEL 2 FLOOR PLAN

SCALE: 1/4"=1'-0"



- GENERAL ELECTRICAL NOTES:
- SEE NORTH UNIT FOR TYPICAL WIRING IN EACH SPACE
 - ALL 120V/20A RECEPTACLES IN APARTMENTS SHALL BE TAMPERPROOF
 - ALL RECEPTACLES INSTALLED ON THE EXTERIOR SHALL HAVE AN ENCLOSURE THAT IS WEATHERPROOF WHILE IN USE, USE A WEATHER RESISTANT RECEPTACLE & BE GFCI PROTECTED
 - VERIFY CIRCUIT PROTECTION WITH NAMEPLATE RATINGS
 - USE AIRTIGHT J BOXES FOR ALL EXTERIOR WALLS
 - WHERE RECEPTACLE IS LOCATED BEHIND AN APPLIANCE OR UNDER THE COUNTER AND REQUIRES GFCI PROTECTION, THE PROTECTION SHALL BE AT THE BREAKER
 - ALL ELECTRICAL OUTLETS INSTALLED IN COMMON PARTY WALLS ARE TO BE INSTALLED TO MAINTAIN THE RATING OF THE MEMBRANE. REFERENCE 2018 IRC R302.4

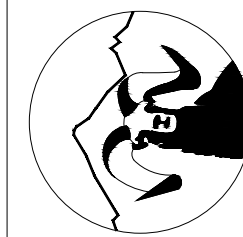


ELECTRICAL - NORTH BUILDING - LEVEL 3 FLOOR PLAN

SCALE: 1/4"=1'-0"

DO NOT REPRODUCE THESE DRAWINGS AND SPECIFICATIONS WITHOUT THE EXPRESSED WRITTEN PERMISSION OF THE DESIGNER. THE DRAWINGS AND SPECIFICATIONS ARE INSTRUMENTS OF THE SERVICE AND SHALL REMAIN THE PROPERTY OF THE DESIGNER. WHETHER THE PROJECT FOR WHICH THEY ARE MADE IS EXECUTED OR NOT. THESE DRAWINGS AND SPECIFICATIONS SHALL NOT BE USED BY ANYONE ON ANY OTHER PROJECT OR IN ADDITION TO THIS PROJECT BY OTHERS EXCEPT BY THE EXPRESSED WRITTEN PERMISSION OF THE DESIGNER.

386 Indian Road
Grand Junction, CO 81501
Phone: (970) 241-8709



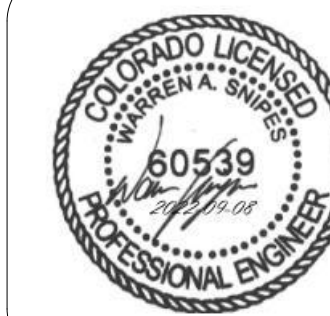
Bighorn Consulting Engineers, Inc.
Mechanical & Electrical Engineers

1805 WALTON CREEK ROAD

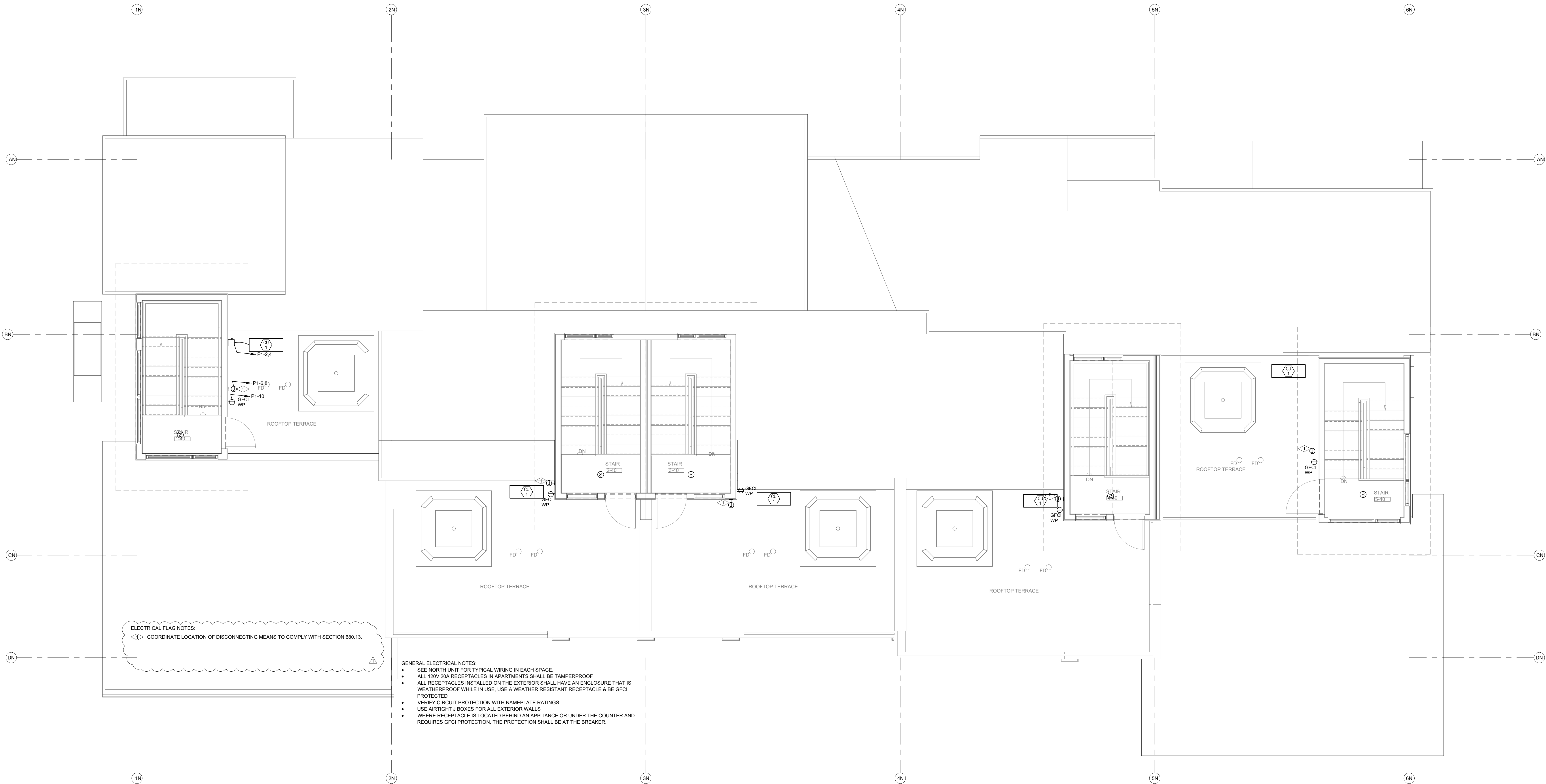
STEAMBOAT SPRINGS, COLORADO

REVIEWED
FOR
CODE
COMPLIANCE
12/07/2022

DATE:	ISSUED FOR:
06/17/2022	PERMIT
09/07/2022	PERMIT CORRECTIONS



DATE:	06/17/2022
JOB NO:	21-276
DRAWN BY:	BCE
CHECKED BY:	BCE
SCALE:	AS SHOWN
SHEET NUMBER:	E2-3



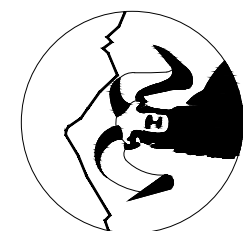
ELECTRICAL FLAG NOTES:
◀ COORDINATE LOCATION OF DISCONNECTING MEANS TO COMPLY WITH SECTION 680.13

- GENERAL ELECTRICAL NOTES:
- SEE NORTH UNIT FOR TYPICAL WIRING IN EACH SPACE.
 - ALL 120V 20A RECEPTACLES IN APARTMENTS SHALL BE TAMPERPROOF.
 - ALL RECEPTACLES INSTALLED ON THE EXTERIOR SHALL HAVE AN ENCLOSURE THAT IS WEATHERPROOF WHILE IN USE. USE A WEATHER RESISTANT RECEPTACLE & BE GFCI PROTECTED.
 - VERIFY CIRCUIT PROTECTION WITH NAMEPLATE RATINGS.
 - USE AIRTIGHT J BOXES FOR ALL EXTERIOR WALLS.
 - WHERE RECEPTACLE IS LOCATED BEHIND AN APPLIANCE OR UNDER THE COUNTER AND REQUIRES GFCI PROTECTION, THE PROTECTION SHALL BE AT THE BREAKER.

 **ELECTRICAL - NORTH BUILDING - LEVEL 4 FLOOR PLAN**
SCALE: 1/4"=1'-0"

DO NOT REPRODUCE THESE DRAWINGS AND SPECIFICATIONS WITHOUT THE EXPRESSED WRITTEN PERMISSION OF THE DESIGNER. THE DRAWINGS AND SPECIFICATIONS ARE INSTRUMENTS OF THE SERVICE AND SHALL REMAIN THE PROPERTY OF THE DESIGNER. WHETHER THE PROJECT FOR WHICH THEY ARE MADE IS EXECUTED OR NOT. THESE DRAWINGS AND SPECIFICATIONS SHALL NOT BE USED BY ANYONE ON ANY OTHER PROJECT OR IN ADDITION TO THIS PROJECT BY OTHERS EXCEPT BY THE EXPRESSED WRITTEN PERMISSION OF THE DESIGNER.

386 Indian Road
Grand Junction, CO 81501
Phone: (970) 241-8709

 **Bighorn Consulting Engineers, Inc.**
Mechanical & Electrical Engineers

1805 WALTON CREEK ROAD
STEAMBOAT SPRINGS, COLORADO

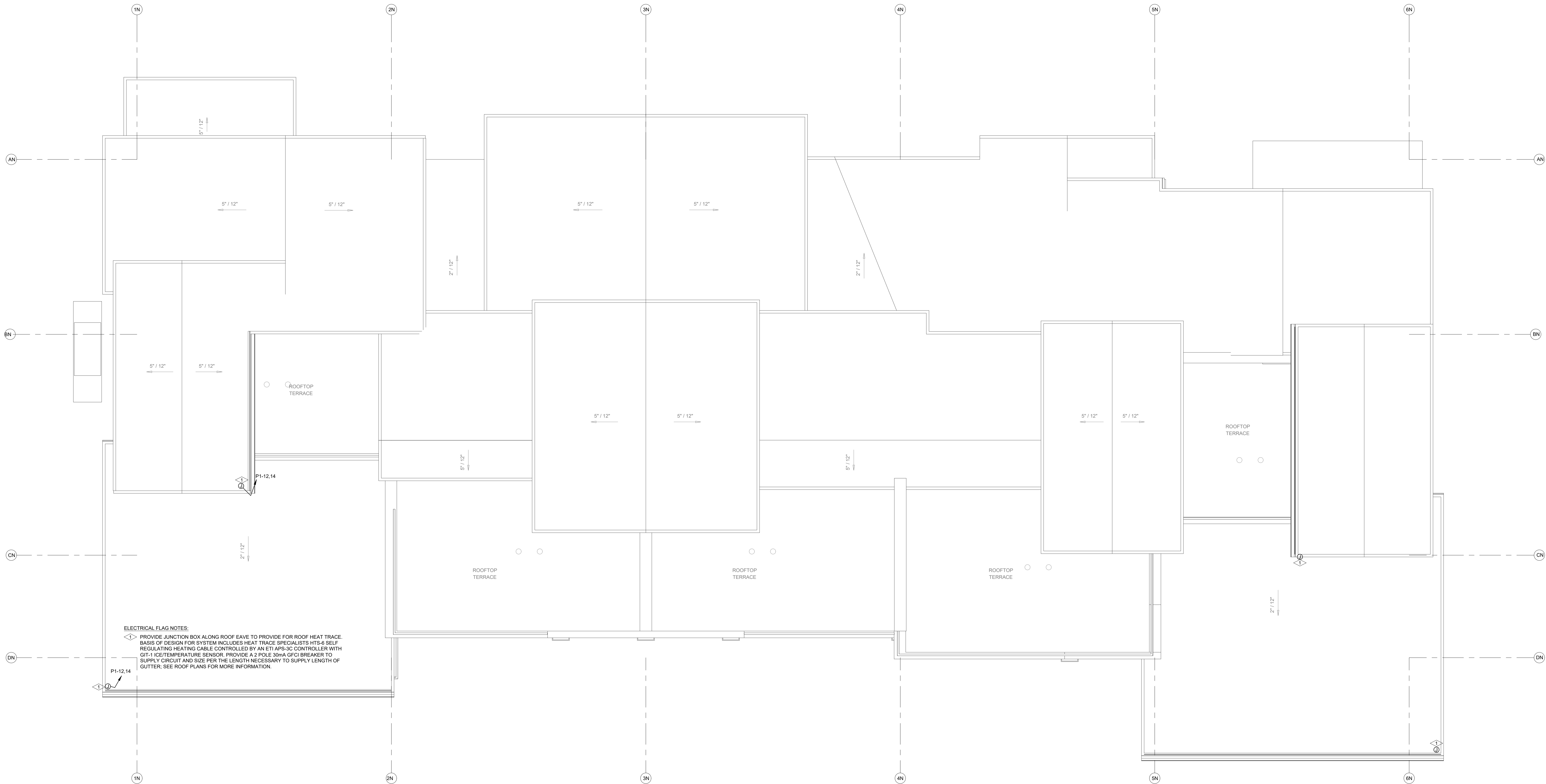
**REVIEWED
FOR
CODE
COMPLIANCE**
12/07/2022

DATE	ISSUED FOR:
06/17/2022	PERMIT
09/07/2022	PERMIT CORRECTIONS



DATE	06/17/2022
JOB NO.	21-276
DRAWN BY:	BCE
CHECKED BY:	BCE
SCALE:	AS SHOWN
SHEET NUMBER:	E2-4

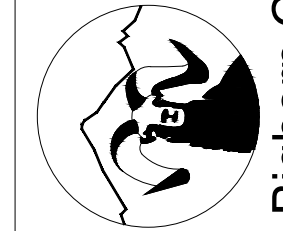
September 08, 2022 - 9:40:38am



ELECTRICAL FLAG NOTES:
P1-12.14
◇◇ PROVIDE JUNCTION BOX ALONG ROOF EAVE TO PROVIDE FOR ROOF HEAT TRACE BASIS OF DESIGN FOR SYSTEM INCLUDES HEAT TRACE SPECIALISTS HTS-6 SELF REGULATING HEATING CABLE CONTROLLED BY AN ETI APS-3C CONTROLLER WITH GT-1 ICE/TEMPERATURE SENSOR. PROVIDE A 2 POLE 30mA GFCI BREAKER TO SUPPLY CIRCUIT AND SIZE PER THE LENGTH NECESSARY TO SUPPLY LENGTH OF GUTTER. SEE ROOF PLANS FOR MORE INFORMATION.

 **ELECTRICAL - NORTH BUILDING - ROOF PLAN**
SCALE: 1/4"=1'-0"

DO NOT REPRODUCE THESE DRAWINGS AND SPECIFICATIONS WITHOUT THE EXPRESSED WRITTEN PERMISSION OF THE DESIGNER. THE DRAWINGS AND SPECIFICATIONS ARE INSTRUMENTS OF THE SERVICE AND SHALL REMAIN THE PROPERTY OF THE DESIGNER. WHETHER THE PROJECT FOR WHICH THEY ARE MADE IS EXECUTED OR NOT. THESE DRAWINGS AND SPECIFICATIONS SHALL NOT BE USED BY ANYONE ON ANY OTHER PROJECT OR IN ADDITION TO THE PROJECT BY OTHERS EXCEPT BY THE EXPRESSED WRITTEN PERMISSION OF THE DESIGNER.



Bighorn Consulting Engineers, Inc.
Mechanical & Electrical Engineers

386 Indian Road
Grand Junction, CO 81501
Phone: (970) 241-8709

1805 WALTON CREEK ROAD
STEAMBOAT SPRINGS, COLORADO

**REVIEWED
FOR
CODE
COMPLIANCE**
12/07/2022

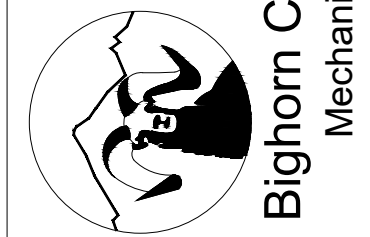
DATE	ISSUED FOR:
06/17/2022	PERMIT
09/07/2022	PERMIT CORRECTIONS



DATE	06/17/2022
JOB NO.	21-276
DRAWN BY:	BCE
CHECKED BY:	BCE
SCALE:	AS SHOWN
SHEET NUMBER:	E2-5

DO NOT REPRODUCE THESE DRAWINGS AND SPECIFICATIONS WITHOUT THE EXPRESSED WRITTEN PERMISSION OF THE DESIGNER. THE DRAWINGS AND SPECIFICATIONS ARE INSTRUMENTS OF THE SERVICE AND SHALL REMAIN THE PROPERTY OF THE DESIGNER. WHETHER THE PROJECT FOR WHICH THEY ARE MADE IS EXECUTED OR NOT. THESE DRAWINGS AND SPECIFICATIONS SHALL NOT BE USED BY ANYONE ON ANY OTHER PROJECT OR IN ANY MANNER WITHOUT THE WRITTEN PERMISSION OF THE DESIGNER.

386 Indian Road
Grand Junction, CO 81501
Phone: (970) 241-8709



1805 WALTON CREEK ROAD
STEAMBOAT SPRINGS, COLORADO

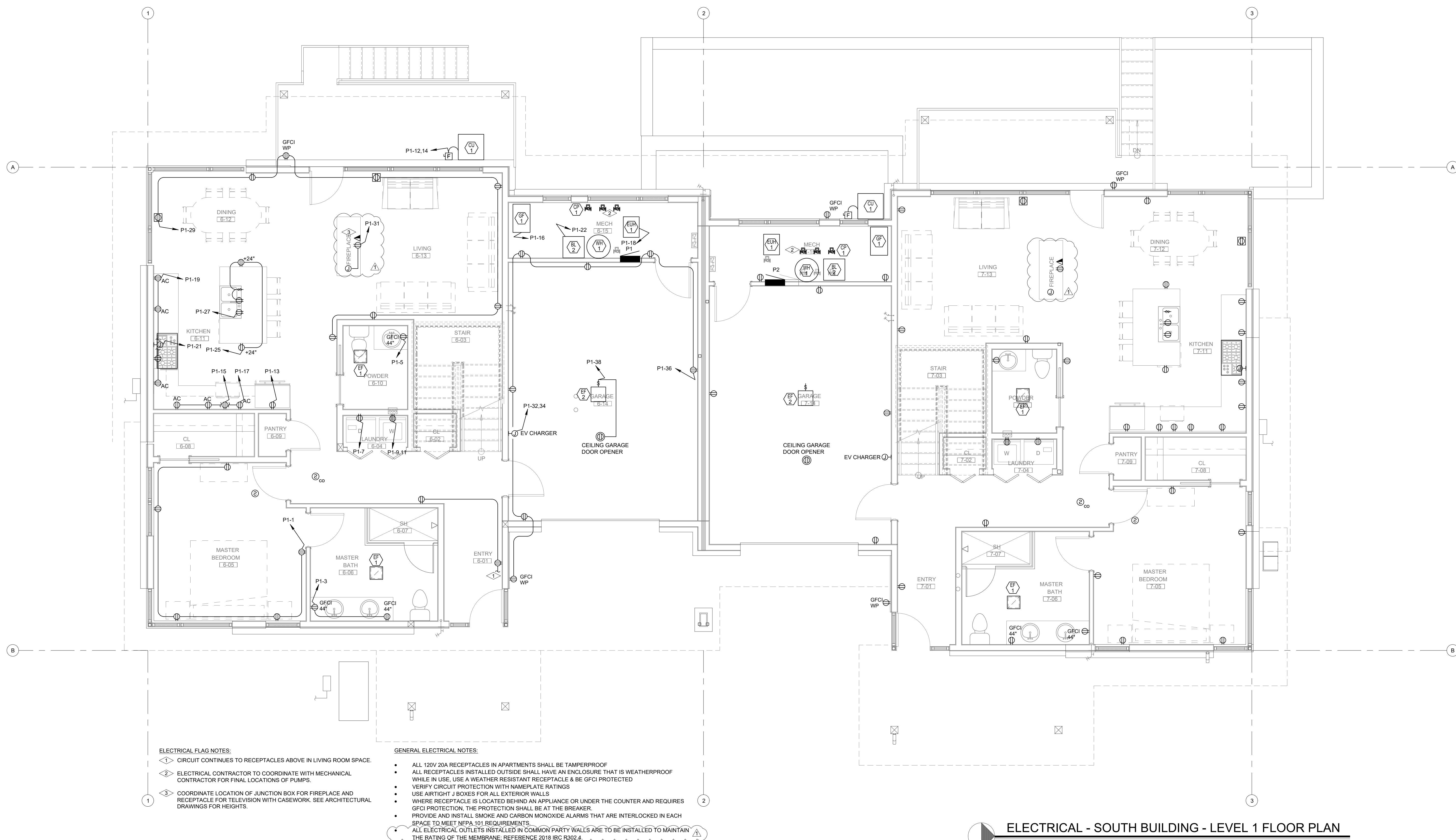
REVIEWED
FOR
CODE
COMPLIANCE
12/07/2022

DATE:	ISSUED FOR:
06/17/2022	PERMIT
09/07/2022	PERMIT CORRECTIONS



DATE:	06/17/2022
JOB NO:	21-276
DRAWN BY:	BCE
CHECKED BY:	BCE
SCALE:	AS SHOWN
SHEET NUMBER:	E2-6

September 08, 2022 - 9:40:40am

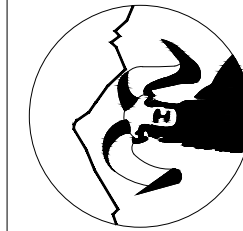


ELECTRICAL - SOUTH BUILDING - LEVEL 1 FLOOR PLAN
SCALE: 1/4"=1'-0"
NORTH



ELECTRICAL - SOUTH BUILDING - LEVEL 2 FLOOR PLAN
SCALE: 1/4"=1'-0"

DO NOT REPRODUCE THESE DRAWINGS AND SPECIFICATIONS WITHOUT THE EXPRESSED WRITTEN PERMISSION OF THE DESIGNER. THE DRAWINGS AND SPECIFICATIONS ARE INSTRUMENTS OF THE SERVICE AND SHALL REMAIN THE PROPERTY OF THE DESIGNER. WHETHER THE PROJECT FOR WHICH THEY ARE MADE IS EXECUTED OR NOT. THESE DRAWINGS AND SPECIFICATIONS SHALL NOT BE USED BY ANYONE ON ANY OTHER PROJECT OR IN ADDITION TO THE PROJECT BY OTHERS EXCEPT BY THE EXPRESSED WRITTEN PERMISSION OF THE DESIGNER.



Bighorn Consulting Engineers, Inc.
Mechanical & Electrical Engineers

386 Indian Road
Grand Junction, CO 81501
Phone: (970) 241-8709

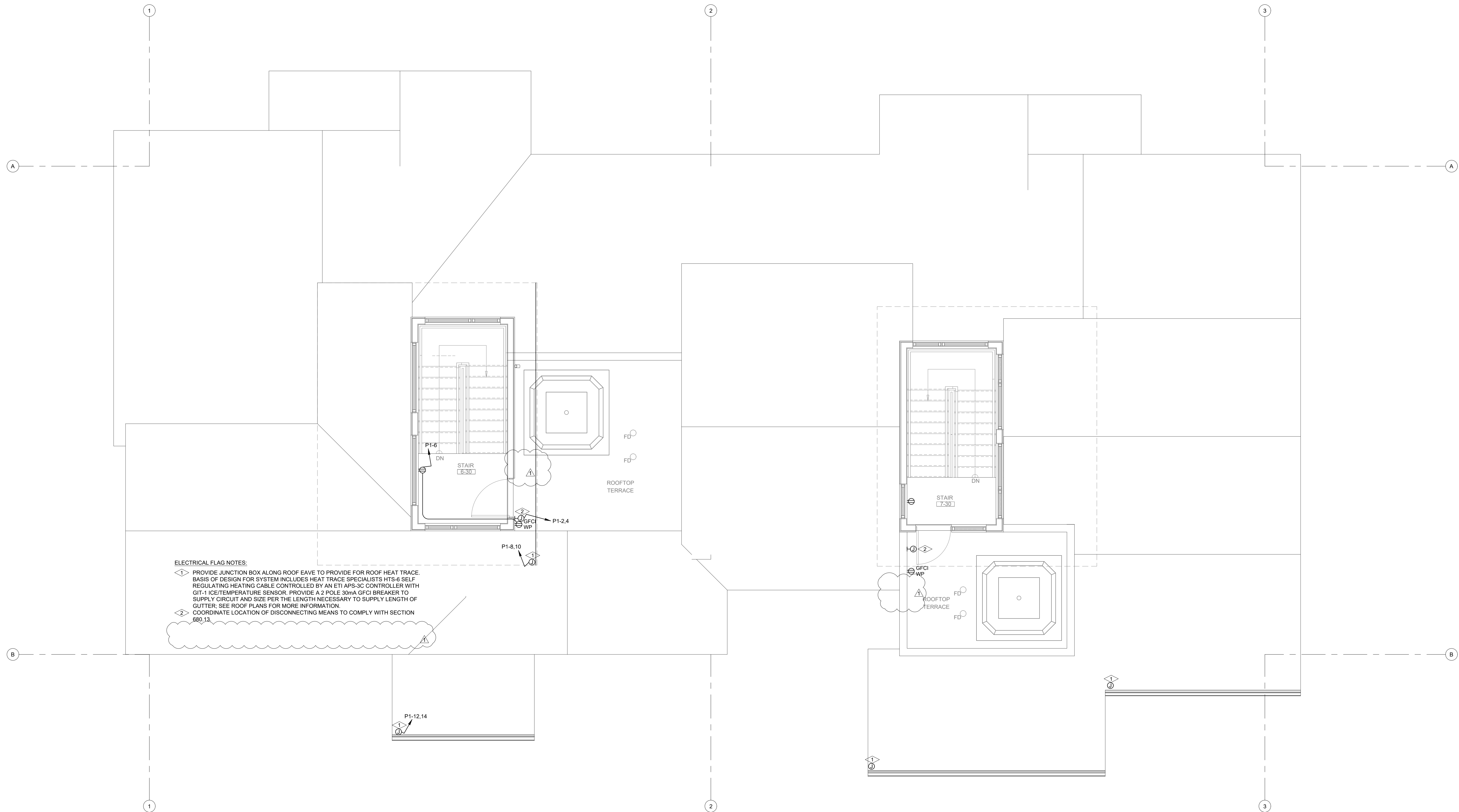
1805 WALTON CREEK ROAD
STEAMBOAT SPRINGS, COLORADO

**REVIEWED
FOR
CODE
COMPLIANCE**
12/07/2022

DATE	ISSUED FOR:
06/17/2022	PERMIT
09/07/2022	PERMIT CORRECTIONS



DATE	06/17/2022
JOB NO.	21-276
DRAWN BY:	BCE
CHECKED BY:	BCE
SCALE:	AS SHOWN
SHEET NUMBER:	E2-7



ELECTRICAL FLAG NOTES:

- 1 PROVIDE JUNCTION BOX ALONG ROOF EAVE TO PROVIDE FOR ROOF HEAT TRACE. BASIS OF DESIGN FOR SYSTEM INCLUDES HEAT TRACE SPECIALISTS HTS-6 SELF-REGULATING HEATING CABLE CONTROLLED BY AN ETI APS-30 CONTROLLER WITH GIT-1 ICE/TEMPERATURE SENSOR. PROVIDE A 2 POLE 30mA GFCI BREAKER TO SUPPLY CIRCUIT AND SIZE PER THE LENGTH NECESSARY TO SUPPLY LENGTH OF GUTTER. SEE ROOF PLANS FOR MORE INFORMATION.
- 2 COORDINATE LOCATION OF DISCONNECTING MEANS TO COMPLY WITH SECTION 800.13.

ELECTRICAL - SOUTH BUILDING - LEVEL 3 FLOOR PLAN
SCALE: 1/4"=1'-0"

DO NOT REPRODUCE THESE DRAWINGS AND SPECIFICATIONS WITHOUT THE EXPRESSED WRITTEN PERMISSION OF THE DESIGNER. THE DRAWINGS AND SPECIFICATIONS ARE INSTRUMENTS OF THE SERVICE AND SHALL REMAIN THE PROPERTY OF THE DESIGNER. WHETHER THE PROJECT FOR WHICH THEY ARE MADE IS EXECUTED OR NOT. THESE DRAWINGS AND SPECIFICATIONS SHALL NOT BE USED BY ANYONE ON ANY OTHER PROJECT OR IN ADDITION TO THIS PROJECT BY OTHERS EXCEPT BY THE EXPRESSED WRITTEN PERMISSION OF THE DESIGNER.

386 Indian Road
Grand Junction, CO 81501
Phone: (970) 241-8709

Bighorn Consulting Engineers, Inc.
Mechanical & Electrical Engineers

1805 WALTON CREEK ROAD
STEAMBOAT SPRINGS, COLORADO

**REVIEWED
FOR
CODE
COMPLIANCE**
12/07/2022

DATE	ISSUED FOR:
06/17/2022	PERMIT
09/07/2022	PERMIT CORRECTIONS



DATE	06/17/2022
JOB NO.	21-276
DRAWN BY:	BCE
CHECKED BY:	BCE
SCALE:	AS SHOWN
SHEET NUMBER:	E2-8

Residential Calculation - Village Drive North 2020 NFPA 70 ART. 220 PART III

2020 NEC 220.14(J), 220.42 & 220.52	
371 SFT Garage Level	
1014 SFT Main Level	
686 SFT Upper Level	
136 SFT Upper Stairwell	
2207 SFT General Lighting Load	6621 VA
2 CCT Small Appliance	3000 VA
1 CCT Laundry Circuit	1500 VA
Total General Load:	11121 VA
3000 VA @ 100% 3000 VA	
8121 VA @ 35% 2842.35 VA	
General Lighting Load: 5842 VA	
2020 NEC 220.51 and 220.60	
Cooling Loads	Heating Loads
Equipment Power	Equipment Power
CU Heat P	5760 VA
CU Heat Pump	5760 VA
Gutter Heat Traces	1200 VA
EUH - Garage Unit Heat	1500 VA
Radiant Pumps	2400 VA
Connected: 10860 VA Greater of Noncoincidental Loads: 10860 VA	
2020 NEC 220.53	
Appliance Loads	Load Each
1 Refrigerator	600 VA
1 Dishwasher	1200 VA
1 Disposal	900 VA
1 Microwave	1200 VA
1 Gas Range/ Hood	1000 VA
4900 VA @ 75%	Appliance Load: 3675 VA
2020 NEC 220.14(A)	
QTY Description	Load Each
1 Humidifier	1200 VA
1 Boiler	1440 VA
2 Circ Pumps	720 VA
1 Gas Dryer	1200 VA
1 Hot Tub	9600 VA
1 EVCL Level II	7200 VA
22080 VA	125% LARGEST MOTOR: 480 VA
Total Other Load: 22560 VA	
240 V	Connected: 49441 VA Demand: 42937 VA
1 Ø	206.0 A 178.9 A

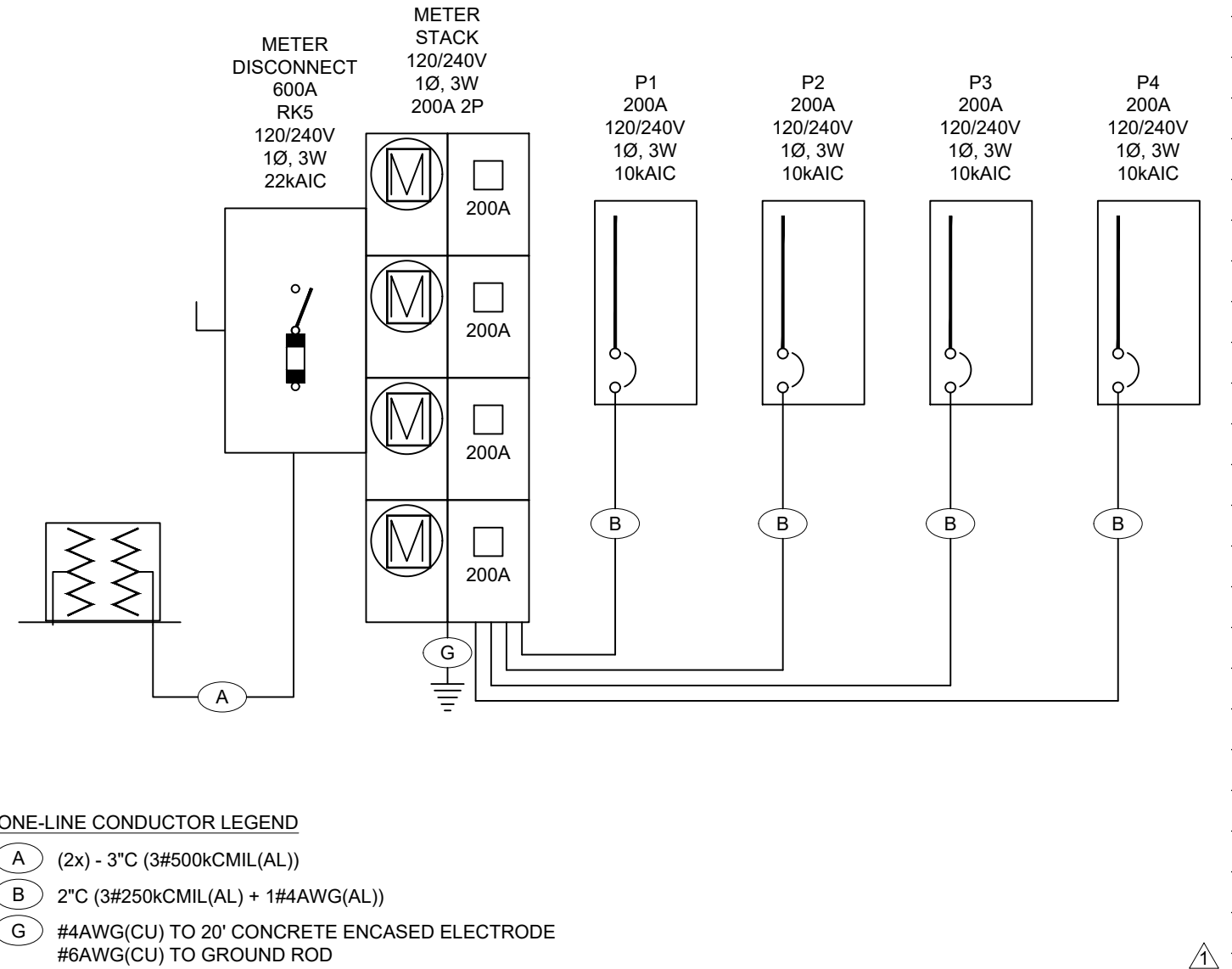
Residential Calculation - Village Drive South 2020 NFPA 70 ART. 220 PART III

2020 NEC 220.14(J), 220.42 & 220.52	
1286 SFT Garage Level	
1018 SFT Upper Level	
136 SFT Upper Stairwell	
2440 SFT General Lighting Load	7320 VA
2 CCT Small Appliance	3000 VA
1 CCT Laundry Circuit	1500 VA
Total General Load:	11820 VA
3000 VA @ 100% 3000 VA	
8820 VA @ 35% 3087 VA	
General Lighting Load: 6087 VA	
2020 NEC 220.51 and 220.60	
Cooling Loads	Heating Loads
Equipment Power	Equipment Power
GF-1 Air	1032 VA
CU AC	4800 VA
GF-1 Gas Furnace	1032 VA
EUH - Garage Unit Heat	1500 VA
Gutter Heat Traces	1500 VA
Radiant Pumps	2400 VA
Connected: 11232 VA Greater of Noncoincidental Loads: 6432 VA	
2020 NEC 220.53	
Appliance Loads	Load Each
1 Refrigerator	600 VA
1 Dishwasher	1200 VA
1 Disposal	900 VA
1 Microwave	1200 VA
1 Gas Range/ Hood	1000 VA
4900 VA @ 75%	Appliance Load: 3675 VA
2020 NEC 220.14(A)	
QTY Description	Load Each
1 Humidifier	1200 VA
1 Boiler	1440 VA
2 Circ Pumps	720 VA
1 Gas Dryer	1200 VA
1 Hot Tub	9600 VA
1 EVCL Level II	7200 VA
22080 VA	125% LARGEST MOTOR: 400 VA
Total Other Load: 22480 VA	
240 V	Connected: 50432 VA Demand: 38674 VA
1 Ø	210.1 A 161.1 A

PANEL SCHEDULE - P1		TYPE: VOLTAGE: ENCLOSURE:	LOADCENTER 120/240 NEMA1	BUS SIZE: MAIN BRKR: MOUNTING:		225 NONE FLUSH	PHASES: WIRES: SC RATING:	1 3 10000	NEUTRAL BUS: GROUND BUS:	YES YES
LOAD TYPE	LOAD DESCRIPTION		AMPS POLES	CKT# LOAD	Ø	CKT# LOAD	AMPS POLES	LOAD TYPE	LOAD DESCRIPTION	
RECEPTACLE	RCPT - MAST. BED CAFCI		20A 1P	1 1440	A	2 2880	30A 2P	MECH YEAR ROUND	CU-1 - HEAT PUMP HACR	
RECEPTACLE	RCPT - MAST. BATH		20A 1P	3 500	B	4 ---	---	MECH YEAR ROUND	---	
RECEPTACLE	RCPT - POWDER ROOM		20A 1P	5 300	A	6 4800	50A 2P	MISCELLANEOUS	SPA - ROOF	
MISCELLANEOUS	WASHER CAFCI/GFCI 5mA		20A 1P	7 1500	B	8 ---	---	MISCELLANEOUS	---	
MISCELLANEOUS	DRYER CAFCI/GFCI 5mA		20A 1P	9 1200	A	10 180	20A 1P	RECEPTACLE	RCPT - ROOF	
SPACE	---		---	11 0	B	12 1000	20A 2P	MECH HEATING	GUTTER HEAT TRACE GFCI 30mA	
APPLIANCE	FRIDGE CAFCI		15A 1P	13 800	A	14 ---	---	MECH HEATING	---	
APPLIANCE	MICROWAVE DRAWER CAFCI		20A 1P	15 1500	B	16 1A	20 1P	MECH HEATING	EUH-1 - UNIT HEATER	
RECEPTACLE	RCPT - KITCHEN COUNTER CAFCI/GFCI 5mA		20A 1P	17 1500	A	18 1A	20 1P	MECH YEAR ROUND	BL-1 BOILER	
RECEPTACLE	RCPT - KITCHEN COUNTER CAFCI/GFCI 5mA		20A 1P	19 1500	B	20 20A 1P	---	MOTOR	CP1/3-BOILER/LOOP PUMP	
APPLIANCE	GAS RANGE/HOOD CAFCI		20A 1P	21 1500	A	22 1500	20A 1P	MOTOR	CP2/7 - WATER HEATER/DOMESTIC	
SPACE	---		---	23 0	B	24 20A 1P	---	MOTOR	CP4/6 - SNOWMELT / LOOP	
RECEPTACLE	RCPT - ISLAND COUNTER CAFCI/GFCI 5mA		20A 1P	25 1500	A	26 20A 1P	---	MOTOR	CP6/7-RADIANT/A.O.P	
APPLIANCE	DISHWASHER CAFCI/GFCI 5mA		20A 1P	27 1200	B	28 20A 1P	---	MISCELLANEOUS	HUMIDIFIER CAFCI/GFCI 5mA	
RECEPTACLE	RCPT - LIVING/DINING CAFCI		20A 1P	29 1200	A	30 3500	40A 2P	MISCELLANEOUS	EVC - GARAGE	
RECEPTACLE	RCPT - FIREPLACE/TV CAFCI		20A 1P	31 1200	B	32 3500	---	MISCELLANEOUS	---	
RECEPTACLE	RCPT - BEDROOM E CAFCI		20A 1P	33 1080	A	34 20A 1P	---	RECEPTACLE	RCPT - GARAGE GFCI 5mA	
RECEPTACLE	RCPT - 3RD BATH E		20A 1P	35 500	B	36 20A 1P	---	RECEPTACLE	RCPT - GARAGE GFCI 5mA	
RECEPTACLE	RCPT - BEDROOM W CAFCI		20A 1P	37 1080	A	38 ---	---	SPACE	---	
RECEPTACLE	RCPT - 3RD BATH W		20A 1P	39 500	B	40 ---	---	SPACE	---	

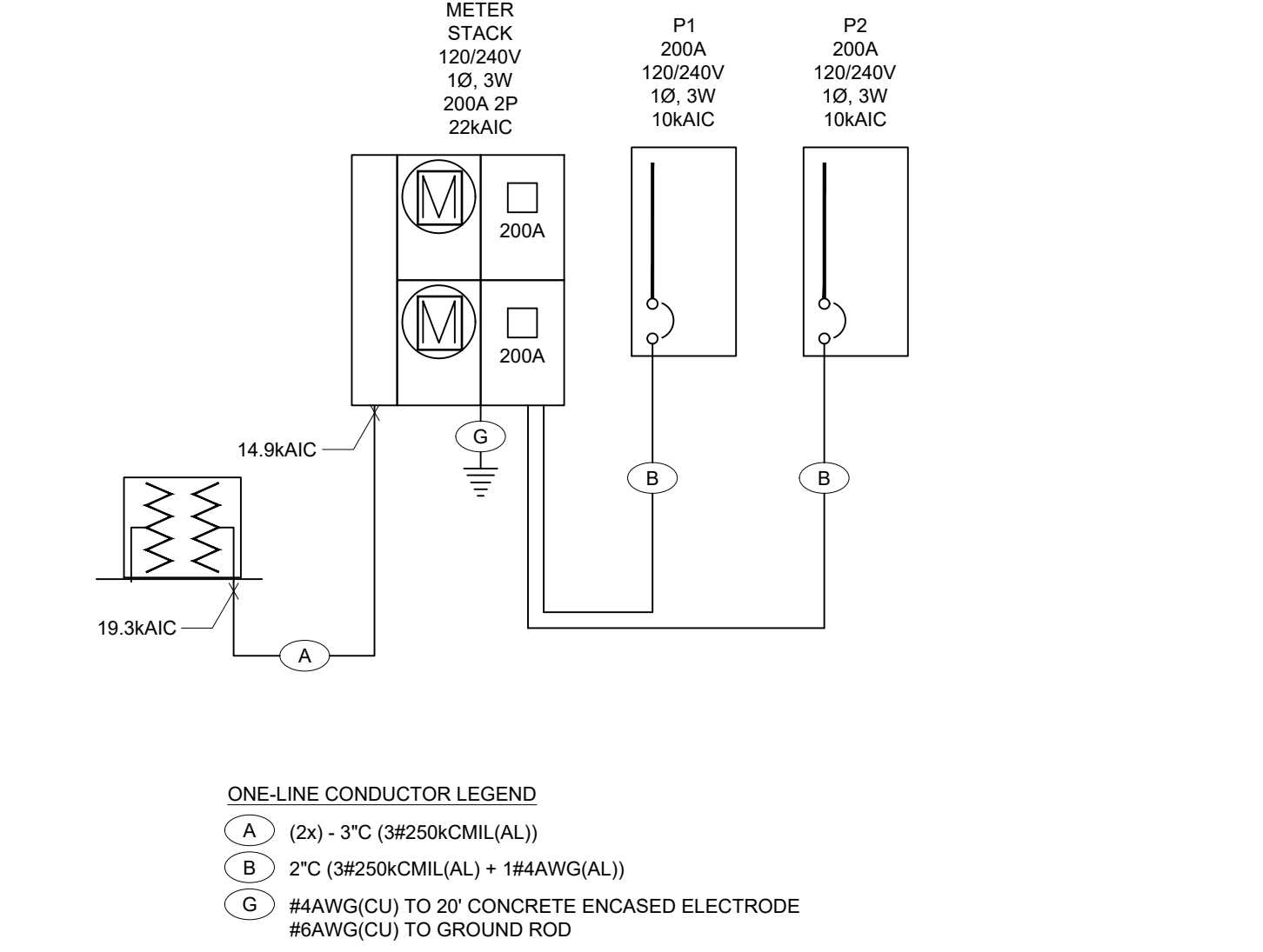
PANEL SCHEDULE -		P1	TYPE: VOLTAGE: ENCLOSURE:	LOADCENTER 120/240 NEMA1	BUS SIZE: MAIN BRKR: MOUNTING:		400 NONE FLUSH	PHASES: WIRES: SC RATING:	1 3 10000	NEUTRAL BUS: GROUND BUS:	YES YES
LOAD TYPE	LOAD DESCRIPTION			AMPS POLES	CKT# LOAD	Ø	CKT# LOAD	AMPS POLES	LOAD TYPE	LOAD DESCRIPTION	
RECEPTACLE	RCPT - MAST. BED CAFCI	20A 1P	1	1440	A	2	4800	50A 2P	MISCELLANEOUS	SPA - ROOF	---
RECEPTACLE	RCPT - MAST. BATH ---	20A 1P	3	500	B	4	4800	---	MISCELLANEOUS	---	---
RECEPTACLE	RCPT - POWDER ROOM ---	20A 1P	5	300	A	6	20A 180	20A 2P	RECEPTACLE	RCPT - ROOF	---
MISCELLANEOUS	WASHER CAFCI/GFCI 5mA	20A 1P	7	1500	B	8	1000	20A 2P	MECH HEATING	GUTTER HEAT TRACE GFCI 30mA	---
MISCELLANEOUS	DRYER CAFCI/GFCI 5mA	20A 1P	9	1200	A	10	1000	---	MECH HEATING	---	---
SPACE	---	---	11	0	B	12	30A 2P	---	MECH COOLING	CU-1 - CONDENSING UNIT	---
APPLIANCE	FRIDGE CAFCI	15A 1P	13	800	A	14	2496	---	MECH COOLING	---	---
APPLIANCE	MICROWAVE DRAWER CAFCI	20A 1P	15	1500	B	16	20A 1500	20A 1P	MECH YEAR ROUND	GF1 - GAS FIRED FURNACE	---
RECEPTACLE	RCPT - KITCHEN COUNTER CAFCI/GFCI 5mA	20A 1P	17	1500	A	18	0	---	SPACE	---	---
RECEPTACLE	RCPT - KITCHEN COUNTER CAFCI/GFCI 5mA	20A 1P	19	1500	B	20	1A 20	1A 1P	MECH HEATING	EUH-1 - UNIT HEATER	---
APPLIANCE	RANGE/HOOD CAFCI	20A 1P	21	1500	A	22	1A 1500	1A 1P	MECH YEAR ROUND	BL-1 BOILER	---
SPACE	---	---	23	0	B	24	20A 1P	---	MOTOR	CP1/3-BOILER/LOOP PUMP	---
RECEPTACLE	RCPT - ISLAND COUNTER CAFCI/GFCI 5mA	20A 1P	25	1500	A	26	20A 1500	20A 1P	MOTOR	CP2/7 - WATER HEATER/DOMESTIC	---
APPLIANCE	DISHWASHER CAFCI/GFCI 5mA	20A 1P	27	1200	B	28	20A 1500	20A 1P	MOTOR	CP4/6 - SNOWMELT / LOOP	---
RECEPTACLE	RCPT - LIVING/DINING CAFCI	20A 1P	29	1260	A	30	20A 1500	20A 1P	MOTOR	CP6/7-RADIANT/LOOP	---
RECEPTACLE	FIREPLACE OUTLETS CAFCI	20A 1P	31	700	B	32	40A 3500	40A 2P	MISCELLANEOUS	EVC - GARAGE	---
RECEPTACLE	RCPT - 2ND COMMON CAFCI	20A 1P	33	720	A	34	3500	---	MISCELLANEOUS	---	---
RECEPTACLE	RCPT - BEDROOM N CAFCI	20A 1P	35	1080	B	36	20A 1500	20A 1P	RECEPTACLE	RCPT - GARAGE GFCI 5mA	---
RECEPTACLE	RCPT - 2ND BATH N ---	20A 1P	37	1080	A	38	20A 1500	20A 1P	RECEPTACLE	RCPT - GARAGE GFCI 5mA	---
RECEPTACLE	RCPT - BEDROOM S CAFCI	20A 1P	39	1080	B	40	0	---	SPACE	---	---
RECEPTACLE	RCPT - 2ND BATH S ---	20A 1P	41	500	A	42	0	---	SPACE	---	---

PANEL SCHEDULE - PH		TYPE: VOLTAGE: ENCLOSURE:	LOADCENTER 120/240 NEMA3R	BUS SIZE: MAIN BRKR: MOUNTING:		60 60 SURFACE	PHASES: WIRES: SC RATING: 1 3 10000	NEUTRAL BUS: GROUND BUS: YES YES	
LOAD TYPE	LOAD DESCRIPTION		AMPS POLES	CKT# LOAD	Ø	CKT# LOAD	AMPS POLES	LOAD TYPE	LOAD DESCRIPTION
MECH YEAR ROUND	BOILER		20A 1P	1 1440	A	2 200	20A 1P	SPARE	SPARE
MOTOR	CP-1 - BOILER PUMP		20A 1P	3 720	B	200	20A 1P	SPARE	SPARE
MOTOR	CP-2 - CIRC PUMP		20A 1P	5 720	A	6 200	20A 1P	SPARE	SPARE
MOTOR	CP-3 - CIRC PUMP		20A 1P	7 720	B	8 200	20A 1P	SPARE	SPARE
MOTOR	CP-4 - LOOP PUMP		20A 1P	9 720	A	10 0		SPACE	
SPACE				11 0	B	12 0		SPACE	
SPACE				13 0	A	14 0		SPACE	
SPACE				15 0	B	16 0		SPACE	
SPACE				17 0	A	18 0		SPACE	
SPACE				19 0	B	20 0		SPACE	
LOADS BY TYPE:				LOADS BY PHASE:					
LOAD TYPE	CONNECTED LOAD (VA)	DEMAND FACTOR	DEMAND LOAD (VA)	PHASE	CONNECTED LOAD (VA)	CONNECTED LOAD (AMPS)	BALANCE (PERCENT)		
LIGHTING	0.00	1.25	0.00	A	3280.00	27.33	A-B: 56.1		
KITCHEN	0.00	0.00	0.00	B	1840.00	15.33	B-A: 56.1		
PROCESS	0.00	1.00	0.00	C	---	---	---		
RECEPTACLES	0.00	1.00	0.00						
MECH HEATING	0.00	1.00	0.00	TOTAL/AVERAGE 5120.00 21.33 56.1					
MECH COOLING	0.00	1.00	0.00						
MECH YEAR ROUND	1440.00	1.00	1440.00						
APPLIANCE	0.00	1.00	0.00						
MISCELLANEOUS	0.00	1.00	0.00						
MOTOR	2880.00	1.00	4320.00						
SPARE	800.00	1.00	800.00						
LARGEST MOTOR	ABOVE	0.25	360.00						
TOTAL	5120.00		5480.00						
1. THE LARGEST CONNECTED MOTOR LOAD IS INCLUDED IN MECHANICAL, PROCESS, OR MOTOR LOADS.									



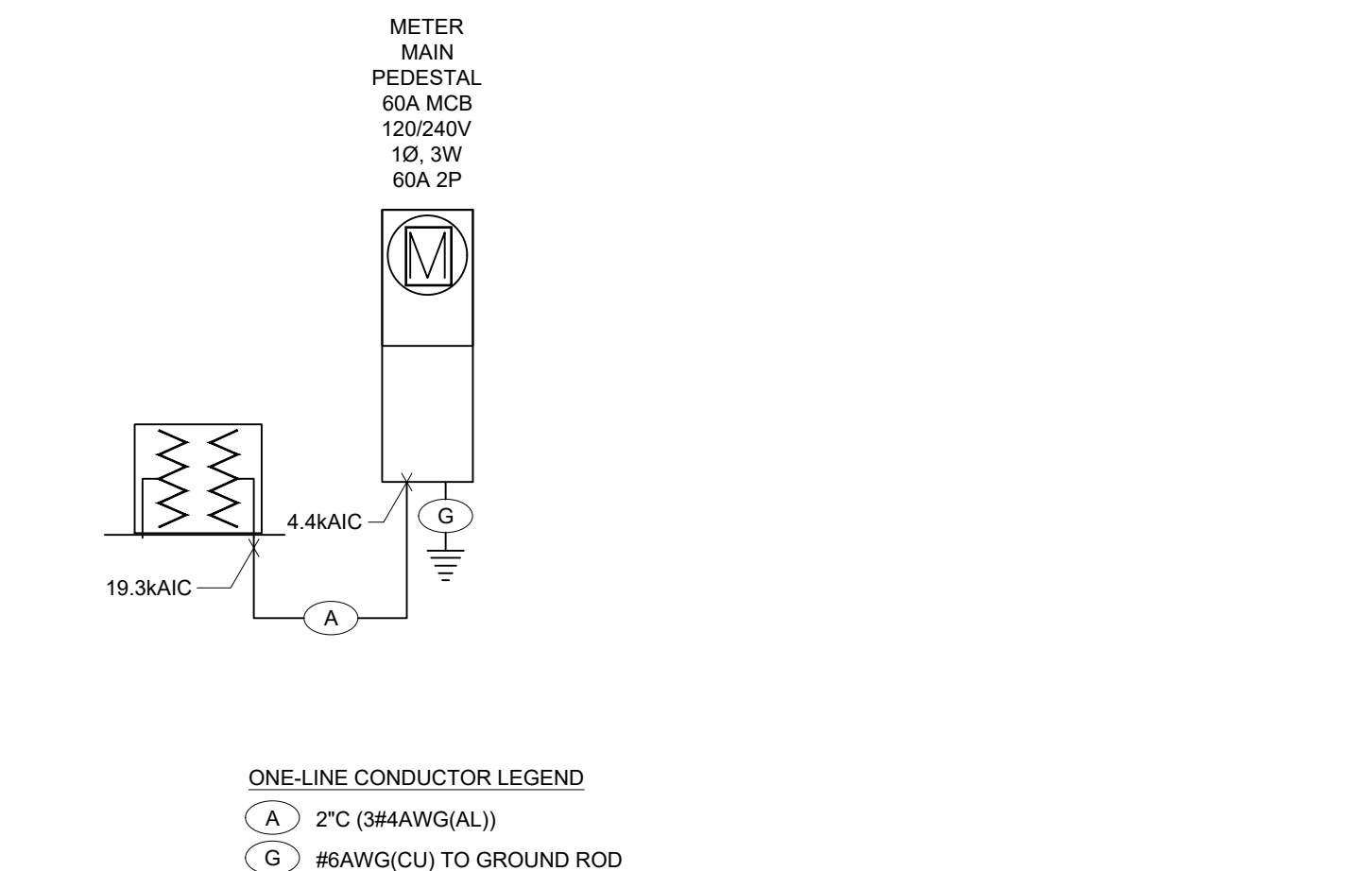
ELECTRICAL - ONE LINE - NORTH BUILDING

- SCALE: NO SCALE
- ELECTRICAL ONE-LINE NOTES:
- PROVIDE GROUNDING AND BONDING MEETING 2020 NEC ARTICLE 250 64(D) REQUIREMENTS.
 - PROVIDE SURGE SUPPRESSIVE DEVICES IN ALL RESIDENTIAL PANELS PER 230.67.
 - UTILIZE SERIES RATED BREAKER COMBINATIONS IN RESIDENTIAL PANELS TO REDUCE BRANCH BREAKER INTERRUPT RATINGS.
 - CIRCUITS IDENTIFIED WITHIN 2020 NEC 210.8(A) AND 210.12(A) ARE TO RECEIVE GROUND FAULT AND ARC FAULT PROTECTION, RESPECTIVELY. WHERE OUTLETS ARE BEHIND LARGE EQUIPMENT OR UNDER COUNTERS PROTECTION IS TO BE AT THE BREAKER.
 - SHORT CIRCUIT VALUES BASED UPON AN ANTICIPATED 167kVA UTILITY TRANSFORMER LOCATED AT A DISTANCE OF 100 FEET TO THE SERVICE. ELECTRICAL CONTRACTOR TO FIELD VERIFY INSTALLED TRANSFORMER AND DISTANCES TO RECALCULATE AS NECESSARY.
 - FEEDERS EXTENDING FROM SERVICE GEAR TO INDIVIDUAL TENANT PANELS ARE TO BE INSTALLED UNDER SLAB SO THAT THE FEEDERS DO NOT EXTEND THROUGH NEIGHBORING UNITS.



ELECTRICAL - ONE LINE - SOUTH BUILDING

- SCALE: NO SCALE
- ELECTRICAL ONE-LINE NOTES:
- PROVIDE GROUNDING AND BONDING MEETING 2020 NEC ARTICLE 250 REQUIREMENTS.
 - PROVIDE SURGE SUPPRESSIVE DEVICES IN ALL RESIDENTIAL PANELS PER 230.67.
 - UTILIZE SERIES RATED BREAKER COMBINATIONS IN RESIDENTIAL PANELS TO REDUCE BRANCH BREAKER INTERRUPT RATINGS.
 - PROVIDE LABELING AT MAIN DISCONNECTS TO MEET 230.85.
 - CIRCUITS IDENTIFIED WITHIN 2020 NEC 210.8(A) AND 210.12(A) ARE TO RECEIVE GROUND FAULT AND ARC FAULT PROTECTION, RESPECTIVELY. WHERE OUTLETS ARE BEHIND LARGE EQUIPMENT OR UNDER COUNTERS PROTECTION IS TO BE AT THE BREAKER.
 - SHORT CIRCUIT VALUES BASED UPON AN ANTICIPATED 100kVA UTILITY TRANSFORMER LOCATED AT A DISTANCE OF 50 FEET TO THE SERVICE. ELECTRICAL CONTRACTOR TO FIELD VERIFY INSTALLED TRANSFORMER AND DISTANCES TO RECALCULATE AS NECESSARY.
 - FEEDERS EXTENDING FROM SERVICE GEAR TO INDIVIDUAL TENANT PANELS ARE TO BE INSTALLED UNDER SLAB SO THAT THE FEEDERS DO NOT EXTEND THROUGH NEIGHBORING UNITS.



ELECTRICAL - ONE LINE - SITE SNOWMELT

- SCALE: NO SCALE
- ELECTRICAL ONE-LINE NOTES:
- PROVIDE GROUNDING AND BONDING MEETING 2020 NEC ARTICLE 250 REQUIREMENTS.
 - REFERENCE SITE PLAN FOR LOCATION ON PROPERTY.
 - SHORT CIRCUIT VALUES BASED UPON AN ANTICIPATED 100kVA UTILITY TRANSFORMER LOCATED AT A DISTANCE OF 50 FEET TO THE SERVICE. ELECTRICAL CONTRACTOR TO FIELD VERIFY INSTALLED TRANSFORMER AND DISTANCES TO RECALCULATE AS NECESSARY.

MECHANICAL EQUIPMENT SCHEDULE - NORTH BUILDING												
COMB: COMBINATION MOTOR STARTER		NR: NONE REQUIRED		CONTR: CONTRACTOR		MAN: MANUAL MOTOR STARTER						
MAG: MAGNETIC MOTOR STARTER		P1: PLUG-IN UNIT		W1: SUPPLIED WITH UNIT:								
UNIT NO	FUNCTION (NOTES)	LOAD	VOLTS	Ø	MIN CIRC AMP	CONDUIT SIZE	NO	WIRE SIZE	GRND WIRE SIZE	BRKR SIZE	START	DISC FUSE
CU-1	HEAT PUMP CONDENSING UNIT	4TON	240V	1	28.0A	1/2"	2	10	10	30A	WU	30A 50A
HP-1	HEAT PUMP INTERIOR CASSETTE		240V	1	0.4A	1/2"	2	14	14		WU	
EF-1	TYPICAL OF HP-2,3&4 EXHAUST FAN - BATH	10W	120V	1	0.1A	1/2"	2	12	12	15A	WU	\$
EF-2	EXHAUST FAN - GARAGE	64W	120V	1	0.5A	1/2"	2	12	12	15A	WU	\$
EUH-1	ELECTRIC UNIT HEATER	1.5kW	120V	1	12A	1/2"	2	12	12	20A	WU	\$
BL-1	GAS FIRED BOILER	1440W	120V	1	12A	1/2"	2	12	12	20A	WU	\$
CP-1	CIRCULATION PUMP	270W	120V	1	5A	1/2"	2	12	12	15A	WU	\$
CP-2	CIRCULATION PUMP TYPICAL OF CP-3,4&7	270W	120V	1	5A	1/2"	2	12	12	15A	WU	\$
CP-3	CIRCULATION PUMP	18HP	120V	1	2A	1/2"	2	12	12	15A	WU	\$
CP-4	CIRCULATION PUMP	370W	120V	1	3A	1/2"	2	12	12	15A	WU	\$

MECHANICAL EQUIPMENT SCHEDULE NOTES:
1. FIELD VERIFY FINAL LOCATIONS OF CIRCULATION PUMPS WITH MECHANICAL CONTRACTOR.
2. HEAT PUMP CASSETTES ARE SUPPLIED FROM EXTERIOR UNIT; SEE MANUFACTURER'S INSTALLATION REQUIREMENTS FOR MORE INFORMATION.

MECHANICAL EQUIPMENT SCHEDULE - SOUTH BUILDING									
COMB: COMBINATION MOTOR STARTER		NR: NONE REQUIRED		CONTR: CONTRACTOR		MAN: MANUAL MOTOR STARTER			